



# SZABO SCANDIC

Part of Europa Biosite

## Produktinformation



Forschungsprodukte & Biochemikalien



Zellkultur & Verbrauchsmaterial



Diagnostik & molekulare Diagnostik



Laborgeräte & Service

Weitere Information auf den folgenden Seiten!  
See the following pages for more information!



### Lieferung & Zahlungsart

siehe unsere [Liefer- und Versandbedingungen](#)

### Zuschläge

- Mindermengenzuschlag
- Trockeneiszuschlag
- Gefahrgutzuschlag
- Expressversand

### SZABO-SCANDIC HandelsgmbH

Quellenstraße 110, A-1100 Wien

T. +43(0)1 489 3961-0

F. +43(0)1 489 3961-7

[mail@szabo-scandic.com](mailto:mail@szabo-scandic.com)

[www.szabo-scandic.com](http://www.szabo-scandic.com)

[linkedin.com/company/szaboscandic](https://www.linkedin.com/company/szaboscandic) 

## E2F3 monoclonal antibody (M01), clone 5F7

Catalog # : H00001871-M01

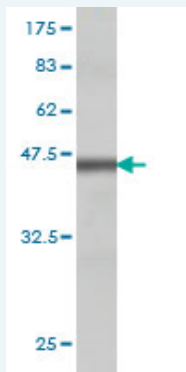
規格 : [ 100 ug ]

[List All](#)

### Specification

<b>Product Description:</b>	Mouse monoclonal antibody raised against a partial recombinant E2F3.
<b>Immunogen:</b>	E2F3 (NP_001940, 336 a.a. ~ 425 a.a) partial recombinant protein with GST tag. MW of the GST tag alone is 26 KDa.
<b>Sequence:</b>	QIHLASTQGPIEVYLCPEETETHSPMKTNNQDHNGNIPKASKDLASTNS GHSDCSVSMGNLSPLASPNLLQQTEDQIPSNLEGPFVNL
<b>Host:</b>	Mouse
<b>Reactivity:</b>	Human
<b>Isotype:</b>	IgG1 Kappa

**Quality Control Testing:** Antibody Reactive Against Recombinant Protein.



Western Blot detection against Immunogen (36.01 KDa) .

**Storage Buffer:** In 1x PBS, pH 7.4

**Storage Instruction:** Store at -20°C or lower. Aliquot to avoid repeated freezing and thawing.

**MSDS:** [Download](#)

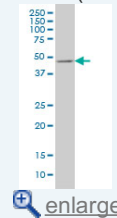
**Datasheet:** [Download](#)

### Applications

**Western Blot (Cell lysate)**

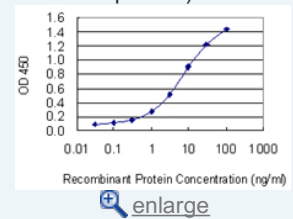
### Application Image

**Western Blot (Cell lysate)**

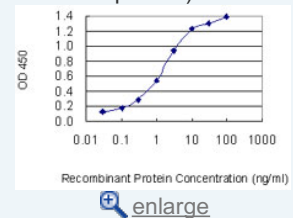


**Western Blot (Recombinant protein)**

**Sandwich ELISA (Recombinant protein)**

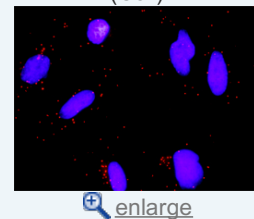


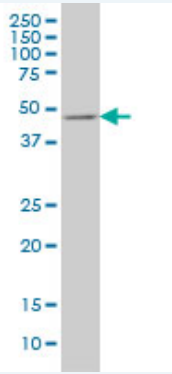
**Sandwich ELISA (Recombinant protein)**



**ELISA**

**In situ Proximity Ligation Assay (Cell)**





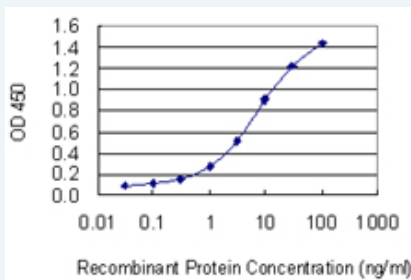
E2F3 monoclonal antibody (M01), clone 5F7 Western Blot analysis of E2F3 expression in COLO 320 HSR ( Cat # L020V1 ).

[Protocol Download](#)

#### Western Blot (Recombinant protein)

[Protocol Download](#)

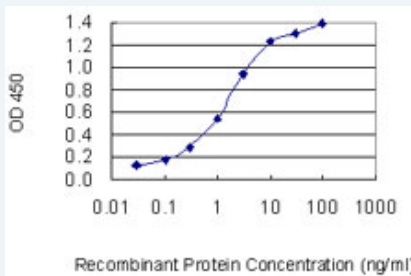
#### Sandwich ELISA (Recombinant protein)



Detection limit for recombinant GST tagged E2F3 is 0.1 ng/ml as a capture antibody.

[Protocol Download](#)

#### Sandwich ELISA (Recombinant protein)

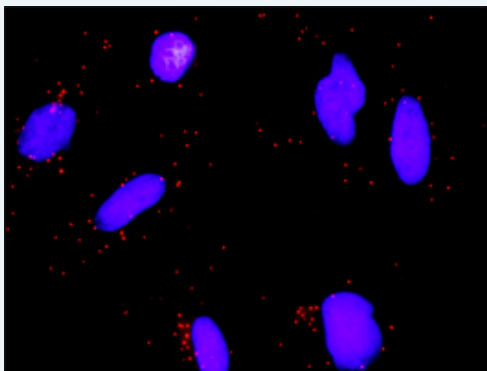


Detection limit for recombinant GST tagged E2F3 is 0.03 ng/ml as a capture antibody.

[Protocol Download](#)

#### ELISA

#### *In situ* Proximity Ligation Assay (Cell)



Proximity Ligation Analysis of protein-protein interactions between MSH2 and E2F3. HeLa cells were stained with anti-MSH2 rabbit purified polyclonal 1:1200 and anti-E2F3 mouse monoclonal antibody 1:50. Each red dot represents the detection of protein-protein interaction complex, and nuclei were counterstained with DAPI (blue).

## Gene Information

---

Entrez GeneID: [1871](#)

---

GeneBank Accession#: [NM\\_001949](#)

---

Protein Accession#: [NP\\_001940](#)

---

Gene Name: E2F3

---

Gene Alias: [DKFZp686C18211](#), [E2F-3](#), [KIAA0075](#), [MGC104598](#)

---

Gene Description: E2F transcription factor 3

---

Omim ID: [600427](#)

---

Gene Ontology: [Hyperlink](#)

---

**Gene Summary:** The protein encoded by this gene is a member of the E2F family of transcription factors. The E2F family plays a crucial role in the control of cell cycle and action of tumor suppressor proteins and is also a target of the transforming proteins of small DNA tumor viruses. The E2F proteins contain several evolutionally conserved domains found in most members of the family. These domains include a DNA binding domain, a dimerization domain which determines interaction with the differentiation regulated transcription factor proteins (DP), a transactivation domain enriched in acidic amino acids, and a tumor suppressor protein association domain which is embedded within the transactivation domain. This protein and another 2 members, E2F1 and E2F2, have an additional cyclin binding domain. This protein binds specifically to retinoblastoma protein pRB in a cell-cycle dependent manner. [provided by RefSeq]

---

Other Designations: [OTTHUMP00000018012](#)

---

## Gene Pathway

---

[Bladder cancer](#) [Cell cycle](#) [Chronic myeloid leukemia](#) [Glioma](#) [Melanoma](#)  
[Non-small cell lung cancer](#) [Pancreatic cancer](#) [Pathways in cancer](#) [Prostate cancer](#)  
[Small cell lung cancer](#)

---

## Related Disease

---

[Genetic Predisposition to Disease](#) [Ovarian Neoplasms](#)

---