



SZABO SCANDIC

Part of Europa Biosite

Produktinformation



Forschungsprodukte & Biochemikalien



Zellkultur & Verbrauchsmaterial



Diagnostik & molekulare Diagnostik



Laborgeräte & Service

Weitere Information auf den folgenden Seiten!
See the following pages for more information!



Lieferung & Zahlungsart

siehe unsere [Liefer- und Versandbedingungen](#)

Zuschläge

- Mindermengenzuschlag
- Trockeneiszuschlag
- Gefahrgutzuschlag
- Expressversand

SZABO-SCANDIC HandelsgmbH

Quellenstraße 110, A-1100 Wien

T. +43(0)1 489 3961-0

F. +43(0)1 489 3961-7

mail@szabo-scandic.com

www.szabo-scandic.com

[linkedin.com/company/szaboscandic](https://www.linkedin.com/company/szaboscandic) 

E2F3 monoclonal antibody (M04), clone 3C11

Catalog # : H00001871-M04

規格 : [100 ug]

[List All](#)

Specification

Product Description: Mouse monoclonal antibody raised against a full-length recombinant E2F3.

Immunogen: E2F3 (AAH16847.1, 1 a.a. ~ 133 a.a) full-length recombinant protein with GST tag. MW of the GST tag alone is 26 KDa.

Sequence: MQSGGGVKTDDTSTLNSLCGYAWVYVWEEKQRCRLSSFFSSSASIPGL
LPSHTLDLVQNVGVLDLDEALGWGRERELCVKCLLEMHCGVFSMGMNHL
CQAFPHFPYLSHLVSLCLFQLCVILFASCTKLIFSKV

Host: Mouse

Reactivity: Human

Isotype: IgG2b Kappa

Quality Control Testing: Antibody Reactive Against Recombinant Protein.

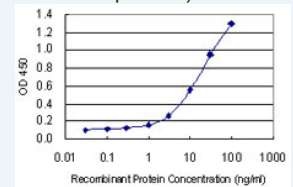
Storage Buffer: In 1x PBS, pH 7.4


Storage Instruction: Store at -20°C or lower. Aliquot to avoid repeated freezing and thawing.

Datasheet:  [Download](#)

Application Image

Sandwich ELISA (Recombinant protein)

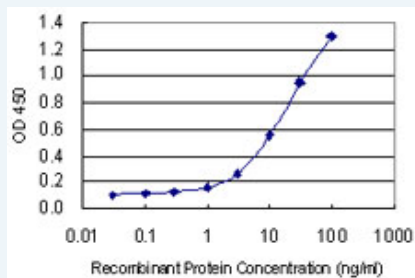


 [enlarge](#)

ELISA

Applications

Sandwich ELISA (Recombinant protein)



Detection limit for recombinant GST tagged E2F3 is 0.3 ng/ml as a capture antibody.

 [Protocol Download](#)

ELISA

Gene Information

Entrez GeneID: [1871](#)

GeneBank Accession#: [BC016847.1](#)

Protein: [AAH16847.1](#)

Accession#:**Gene Name:** E2F3**Gene Alias:** DKFZp686C18211,E2F-3,KIAA0075,MGC104598**Gene Description:** E2F transcription factor 3**Omim ID:** [600427](#)**Gene Ontology:** [Hyperlink](#)

Gene Summary: The protein encoded by this gene is a member of the E2F family of transcription factors. The E2F family plays a crucial role in the control of cell cycle and action of tumor suppressor proteins and is also a target of the transforming proteins of small DNA tumor viruses. The E2F proteins contain several evolutionally conserved domains found in most members of the family. These domains include a DNA binding domain, a dimerization domain which determines interaction with the differentiation regulated transcription factor proteins (DP), a transactivation domain enriched in acidic amino acids, and a tumor suppressor protein association domain which is embedded within the transactivation domain. This protein and another 2 members, E2F1 and E2F2, have an additional cyclin binding domain. This protein binds specifically to retinoblastoma protein pRB in a cell-cycle dependent manner. [provided by RefSeq]

Other Designations: OTTHUMP00000018012**Gene Pathway**

[Bladder cancer](#) [Cell cycle](#) [Chronic myeloid leukemia](#) [Glioma](#) [Melanoma](#)
[Non-small cell lung cancer](#) [Pancreatic cancer](#) [Pathways in cancer](#) [Prostate cancer](#)
[Small cell lung cancer](#)

Related Disease

[Genetic Predisposition to Disease](#) [Ovarian Neoplasms](#)