



SZABO SCANDIC

Part of Europa Biosite

Produktinformation



Forschungsprodukte & Biochemikalien



Zellkultur & Verbrauchsmaterial



Diagnostik & molekulare Diagnostik



Laborgeräte & Service

Weitere Information auf den folgenden Seiten!
See the following pages for more information!



Lieferung & Zahlungsart

siehe unsere [Liefer- und Versandbedingungen](#)

Zuschläge

- Mindermengenzuschlag
- Trockeneiszuschlag
- Gefahrgutzuschlag
- Expressversand

SZABO-SCANDIC HandelsgmbH

Quellenstraße 110, A-1100 Wien

T. +43(0)1 489 3961-0

F. +43(0)1 489 3961-7

mail@szabo-scandic.com

www.szabo-scandic.com

[linkedin.com/company/szaboscandic](https://www.linkedin.com/company/szaboscandic) 

E2F6 MaxPab mouse polyclonal antibody (B01) MaxPab®

Catalog # : H00001876-B01

規格 : [50 uL]

[List All](#)

Specification

Product Description: Mouse polyclonal antibody raised against a full-length human E2F6 protein.

Immunogen: E2F6 (NP_937987, 1 a.a. ~ 281 a.a) full-length human protein.

Sequence:
 MSQQRPARKLPSLLLDPTTEETVRRRCRDPINVEGLLPSKIRINLEDNVQY
 VSMRKALKVKRPRFDVSLVYL TRKFMDLVRAPGGILDNLKVATKLGVR
 KRRVYDITNVLGDIDLVEKSKNHIRWIGSDLSNF GAVPQQKKLQEELSDL
 SAMEDALDELIKDCAQQLFELTDDKENERLAYVTYQDIHSIQAFHEQIVIAV
 KAPAETRLDVPAPREDSITVHIRSTNGPIDVYLCEVEQGQTSNKRSEGVG
 TSSSESTHPEGPEEEENPQQSEELLEVS

Host: Mouse

Reactivity: Human

Quality Control Testing: Antibody reactive against mammalian transfected lysate.

Storage Buffer: No additive

Storage Instruction: Store at -20°C or lower. Aliquot to avoid repeated freezing and thawing.

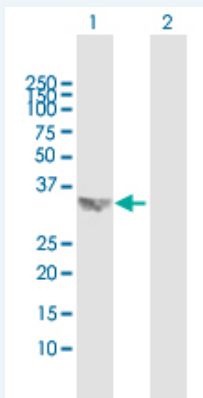
Note: For IHC and IF applications, antibody purification with Protein A will be needed prior to use.

MSDS: [Download](#)

Datasheet: [Download](#)

Applications

Western Blot (Transfected lysate)



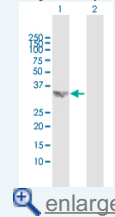
Western Blot analysis of E2F6 expression in transfected 293T cell line (H00001876-T01) by E2F6 MaxPab polyclonal antibody.

Lane 1: E2F6 transfected lysate(30.91 KDa).

Lane 2: Non-transfected lysate.

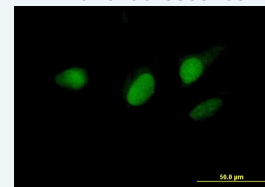
Application Image

Western Blot (Transfected lysate)



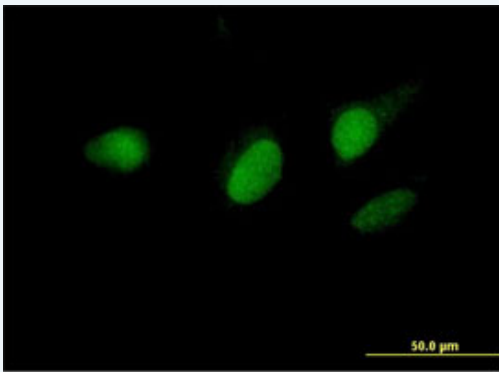
[enlarge](#)


Immunofluorescence



[enlarge](#)

Immunofluorescence



 enlarge this image

Immunofluorescence of purified MaxPab antibody to E2F6 on HeLa cell. [antibody concentration 10 ug/ml]

Gene Information

Entrez GeneID: [1876](#)

GeneBank Accession#: [NM_198256](#)

Protein Accession#: [NP_937987](#)

Gene Name: E2F6

Gene Alias: E2F-6,MGC111545

Gene Description: E2F transcription factor 6

Omim ID: [602944](#)

Gene Ontology: [Hyperlink](#)

Gene Summary: This gene encodes a member of the E2F transcription factor protein family. E2F family members play a crucial role in control of the cell cycle and of the action of tumor suppressor proteins. They are also a target of the transforming proteins of small DNA tumor viruses. Many E2F proteins contain several evolutionarily conserved domains: a DNA binding domain, a dimerization domain which determines interaction with the differentiation regulated transcription factor proteins (DP), a transactivation domain enriched in acidic amino acids, and a tumor suppressor protein association domain which is embedded within the transactivation domain. The encoded protein of this gene is atypical because it lacks the transactivation and tumor suppressor protein association domains. It contains a modular suppression domain and is an inhibitor of E2F-dependent transcription. The protein is part of a multimeric protein complex that contains a histone methyltransferase and the transcription factors Mga and Max. Multiple transcript variants have been reported for this gene, but it has not been clearly demonstrated that they encode valid isoforms. [provided by RefSeq]

Other Designations: E2F transcription factor 6, isoform 1

Related Disease

[Genetic Predisposition to Disease Ovarian Neoplasms](#)

