



# SZABO SCANDIC

Part of Europa Biosite

## Produktinformation



Forschungsprodukte & Biochemikalien



Zellkultur & Verbrauchsmaterial



Diagnostik & molekulare Diagnostik



Laborgeräte & Service

Weitere Information auf den folgenden Seiten!  
See the following pages for more information!



### Lieferung & Zahlungsart

siehe unsere [Liefer- und Versandbedingungen](#)

### Zuschläge

- Mindermengenzuschlag
- Trockeneiszuschlag
- Gefahrgutzuschlag
- Expressversand

### SZABO-SCANDIC HandelsgmbH

Quellenstraße 110, A-1100 Wien

T. +43(0)1 489 3961-0

F. +43(0)1 489 3961-7

[mail@szabo-scandic.com](mailto:mail@szabo-scandic.com)

[www.szabo-scandic.com](http://www.szabo-scandic.com)

[linkedin.com/company/szaboscandic](https://www.linkedin.com/company/szaboscandic) 

## E2F6 monoclonal antibody (M01), clone 2B6-G9

Catalog # : H00001876-M01

規格 : [ 100 ug ]

List All

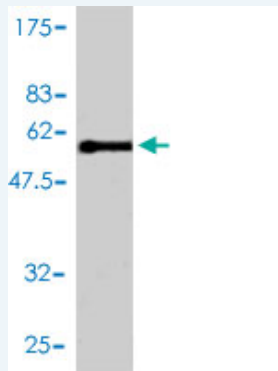
### Specification

<b>Product Description:</b>	Mouse monoclonal antibody raised against a full length recombinant E2F6.
<b>Immunogen:</b>	E2F6 (AAH08348, 1 a.a. ~ 281 a.a) full-length recombinant protein with GST tag. MW of the GST tag alone is 26 KDa.
<b>Sequence:</b>	MSQQRPAKLPSSLLLDPTTEETVRRRCRDPINVEGLLPSKIRINLEDNVQY VSMRKALKVKRPRFDVSLVYLTRKFMDLVRSAPGGILDNLNKVATKLGVR KRRVYDITNMLDGDILVEKSKNHIRWIGSDLSNF GAVPQQKKLQEELSDL SAMEDALDELIKDCAQQLFELTDDKENERLAYVTYQDIHSIQAFHEQIVIAV KAPAETRLDVPAPREDSITVHIRSTNGPIDVYLCEVEQGQTSNKRSEGVG TSSSESTHPEGPEEEENPQQSEELLEVS
<b>Host:</b>	Mouse
<b>Reactivity:</b>	Human
<b>Isotype:</b>	IgG2a kappa

### Application Image

Western Blot (Recombinant protein)  
Sandwich ELISA (Recombinant protein)  
ELISA

**Quality Control Testing:** Antibody Reactive Against Recombinant Protein.



Western Blot detection against Immunogen (56.65 KDa) .

**Storage Buffer:** In 1x PBS, pH 7.4

**Storage Instruction:** Store at -20°C or lower. Aliquot to avoid repeated freezing and thawing.

**MSDS:** [Download](#)

**Datasheet:** [Download](#)

### Applications

**Western Blot (Recombinant protein)**

[Protocol Download](#)

**Sandwich ELISA (Recombinant protein)**

Detection limit for recombinant GST tagged E2F6 is approximately 0.03ng/ml as a capture antibody.

[Protocol Download](#)

## ELISA

### Gene Information

Entrez GeneID: [1876](#)

GeneBank  
Accession#: [BC008348](#)

Protein  
Accession#: [AAH08348](#)

Gene Name: E2F6

Gene Alias: E2F-6,MGC111545

Gene  
Description: E2F transcription factor 6

Omim ID: [602944](#)

Gene Ontology: [Hyperlink](#)

**Gene Summary:** This gene encodes a member of the E2F transcription factor protein family. E2F family members play a crucial role in control of the cell cycle and of the action of tumor suppressor proteins. They are also a target of the transforming proteins of small DNA tumor viruses. Many E2F proteins contain several evolutionarily conserved domains: a DNA binding domain, a dimerization domain which determines interaction with the differentiation regulated transcription factor proteins (DP), a transactivation domain enriched in acidic amino acids, and a tumor suppressor protein association domain which is embedded within the transactivation domain. The encoded protein of this gene is atypical because it lacks the transactivation and tumor suppressor protein association domains. It contains a modular suppression domain and is an inhibitor of E2F-dependent transcription. The protein is part of a multimeric protein complex that contains a histone methyltransferase and the transcription factors Mga and Max. Multiple transcript variants have been reported for this gene, but it has not been clearly demonstrated that they encode valid isoforms. [provided by RefSeq]

Other  
Designations: E2F transcription factor 6, isoform 1

### Related Disease

[Genetic Predisposition to Disease Ovarian Neoplasms](#)