



SZABO SCANDIC

Part of Europa Biosite

Produktinformation



Forschungsprodukte & Biochemikalien



Zellkultur & Verbrauchsmaterial



Diagnostik & molekulare Diagnostik



Laborgeräte & Service

Weitere Information auf den folgenden Seiten!
See the following pages for more information!



Lieferung & Zahlungsart

siehe unsere [Liefer- und Versandbedingungen](#)

Zuschläge

- Mindermengenzuschlag
- Trockeneiszuschlag
- Gefahrgutzuschlag
- Expressversand

SZABO-SCANDIC HandelsgmbH

Quellenstraße 110, A-1100 Wien

T. +43(0)1 489 3961-0

F. +43(0)1 489 3961-7

mail@szabo-scandic.com

www.szabo-scandic.com

[linkedin.com/company/szaboscandic](https://www.linkedin.com/company/szaboscandic) 

E2F6 monoclonal antibody (M02), clone 1F7-A9

Catalog # : H00001876-M02

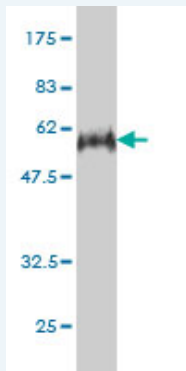
規格 : [100 ug]

[List All](#)

Specification

Product Description:	Mouse monoclonal antibody raised against a full length recombinant E2F6.
Immunogen:	E2F6 (AAH08348, 1 a.a. ~ 281 a.a) full-length recombinant protein with GST tag. MW of the GST tag alone is 26 KDa.
Sequence:	MSQQRPAKLPSSLLLDPTTEETVRRRCRDPINVEGLLPSKIRINLEDNVQY VSMRKALKVKRPRFDVSLVYLTRKFMDLVRSAPGGILDNLNKVATKLGVR KRRVYDITNVLGDIDLVEKSKNHIRWIGSDLSNF GAVPQQKKLQEELSDL SAMEDALDELIKDCAQLFELTDDKENERLAYVTYQDIHSIQAFHEQIVIAV KAPAETRLDPAPREDSITVHIRSTNGPIDVYLCEVEQGQTSNKRSEGVG TSSSESTHPEGPEEEEEENPQQSEELLEVS
Host:	Mouse
Reactivity:	Human
Isotype:	IgG2a kappa

Quality Control Testing: Antibody Reactive Against Recombinant Protein.



Western Blot detection against Immunogen (56.65 KDa) .

Storage Buffer: In 1x PBS, pH 7.4

Storage Instruction: Store at -20°C or lower. Aliquot to avoid repeated freezing and thawing.

MSDS: [Download](#)

Datasheet: [Download](#)

Applications

Western Blot (Recombinant protein)

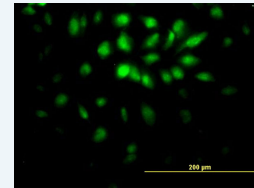
[Protocol Download](#)

Immunofluorescence

Application Image

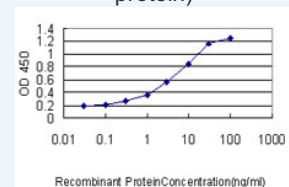
Western Blot (Recombinant protein)

Immunofluorescence



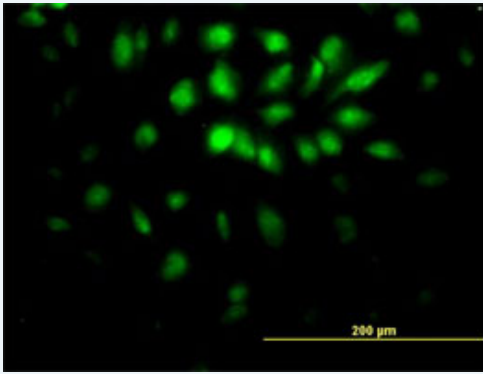
[enlarge](#)

Sandwich ELISA (Recombinant protein)



[enlarge](#)

ELISA

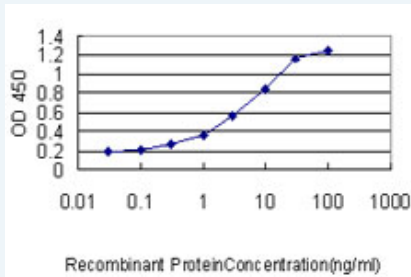


[enlarge this image](#)

Immunofluorescence of monoclonal antibody to E2F6 on HeLa cell. [antibody concentration 10 ug/ml]

[Protocol Download](#)

Sandwich ELISA (Recombinant protein)



Detection limit for recombinant GST tagged E2F6 is approximately 0.03ng/ml as a capture antibody.

[Protocol Download](#)

ELISA

Gene Information

Entrez GeneID: [1876](#)

GeneBank [BC008348](#)

Accession#:

Protein [AAH08348](#)

Accession#:

Gene Name: E2F6

Gene Alias: E2F-6, MGC111545

Gene Description: E2F transcription factor 6

Omim ID: [602944](#)

Gene Ontology: [Hyperlink](#)

Gene Summary: This gene encodes a member of the E2F transcription factor protein family. E2F family members play a crucial role in control of the cell cycle and of the action of tumor suppressor proteins. They are also a target of the transforming proteins of small DNA tumor viruses. Many E2F proteins contain several evolutionarily conserved domains: a DNA binding domain, a dimerization domain which determines interaction with the differentiation regulated transcription factor proteins (DP), a transactivation domain enriched in acidic amino acids, and a tumor suppressor protein association domain which is embedded within the transactivation domain. The encoded protein of this gene is atypical because it lacks the transactivation and tumor suppressor protein association domains. It contains a modular suppression domain and is an inhibitor of E2F-dependent transcription. The protein is part of a

multimeric protein complex that contains a histone methyltransferase and the transcription factors Mga and Max. Multiple transcript variants have been reported for this gene, but it has not been clearly demonstrated that they encode valid isoforms. [provided by RefSeq

Other Designations: E2F transcription factor 6, isoform 1

Related Disease

Genetic Predisposition to Disease Ovarian Neoplasms

[服務條款](#) | [隱私權政策](#) | [著作及商標](#) | [網站地圖](#)

©2016 亞諾法生技股份有限公司 Abnova Corporation. 版權所有.