



# SZABO SCANDIC

Part of Europa Biosite

## Produktinformation



Forschungsprodukte & Biochemikalien



Zellkultur & Verbrauchsmaterial



Diagnostik & molekulare Diagnostik



Laborgeräte & Service

Weitere Information auf den folgenden Seiten!  
See the following pages for more information!



### Lieferung & Zahlungsart

siehe unsere [Liefer- und Versandbedingungen](#)

### Zuschläge

- Mindermengenzuschlag
- Trockeneiszuschlag
- Gefahrgutzuschlag
- Expressversand

### SZABO-SCANDIC HandelsgmbH

Quellenstraße 110, A-1100 Wien

T. +43(0)1 489 3961-0

F. +43(0)1 489 3961-7

[mail@szabo-scandic.com](mailto:mail@szabo-scandic.com)

[www.szabo-scandic.com](http://www.szabo-scandic.com)

[linkedin.com/company/szaboscandic](https://www.linkedin.com/company/szaboscandic) 

## EBF1 purified MaxPab rabbit polyclonal antibody (D01P) MaxPab®

Catalog # : H00001879-D01P

規格 : [ 100 ug ]

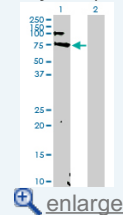
[List All](#)

### Specification

<b>Product Description:</b>	Rabbit polyclonal antibody raised against a full-length human EBF1 protein.
<b>Immunogen:</b>	EBF1 (AAH41178.1, 1 a.a. ~ 560 a.a) full-length human protein.
<b>Sequence:</b>	<p>MFGIQESIQRSGSSMKKEPLGSGMNAVRTWMQGAGVLDANTAAQSGV            GLARAHFEKQPPSNLRKSNFFHFVLALYDRQGQPVEIERTAFVGFVEKE            KEANSEKTNGIHYRLQLLYSNGIRTEQDFYVRLIDSMTKQAIYEGQDKN            PEMCRVLLTHEIMCRFFLKFFLKCNQCNCLKNAGNPRDMRRFQVVVSTTV            NVDGHLAVSDNMFVHNNSKHGRRARRLDPSEATPCIKAISPSEGWTTG            GATVIIIIDNFFDGLQVIFGTMLVWSELITPHAIRVQTPPRHIPGVVEVTL            YKSKQFCKGTPGRFIYALNEPTIDYGFQRLQKVIPRHPGDPERLPKEVIL            KRAADLVEALYGMPHNNQEIILKRAADIAEALYSVPRNHNQLPALANTSVH            AGMMGVNSFSGQLAVNVSEASQATNQGFTRNSSSVSPHGYVPSTTPQ            QTNYNSVTTSMNGYGSAAMSNLGGSPFTLNGSAANSPYAIVPSSPTMAS            STSLPSNCSSSSGIFSFSPANMMSAVKQKSAFAPVVRPQTSPPPTCTSTN            GNSLQAISGMIVPPM</p>
<b>Host:</b>	Rabbit
<b>Reactivity:</b>	Human
<b>Quality Control Testing:</b>	Antibody reactive against mammalian transfected lysate.
<b>Storage Buffer:</b>	In 1x PBS, pH 7.4
<b>Storage Instruction:</b>	Store at -20°C or lower. Aliquot to avoid repeated freezing and thawing.
<b>MSDS:</b>	<a href="#">Download</a>
<b>Datasheet:</b>	<a href="#">Download</a>

### Application Image

Western Blot (Transfected lysate)

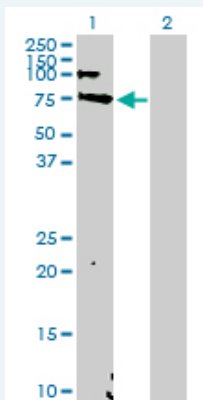


### Publication Reference

1. [A global DNA methylation and gene expression analysis of early human B-cell development reveals a demethylation signature and transcription factor network.](#) Lee ST, Xiao Y, Muench MO, Xiao J, Fomin ME, Wiencke JK, Zheng S, Dou X, de Smith A, Chokkalingam A, Buffler P, Ma X, Wiemels JL. *Nucleic Acids Res.* 2012 Oct 16. [Epub ahead of print]


### Applications

Western Blot (Transfected lysate)



Western Blot analysis of EBF1 expression in transfected 293T cell line ([H00001879-T01](#)) by EBF1 MaxPab polyclonal antibody.

Lane 1: EBF1 transfected lysate(61.10 KDa).  
Lane 2: Non-transfected lysate.

 [Protocol Download](#)

### Gene Information

**Entrez GeneID:** [1879](#)

**GeneBank Accession#:** [BC041178.1](#)

**Protein Accession#:** [AAH41178.1](#)

**Gene Name:** EBF1

**Gene Alias:** COE1,EBF,FLJ39389,FLJ41763,O/E-1,OLF1

**Gene Description:** early B-cell factor 1

**Omim ID:** [164343](#)

**Gene Ontology:** [Hyperlink](#)

**Other Designations:** Collier, Olf and EBF transcription factor 1,early B-cell factor,olfactory neuronal transcription factor 1

### Related Disease

[Multiple Sclerosis](#) [Tobacco Use Disorder](#)