



# SZABO SCANDIC

Part of Europa Biosite

## Produktinformation



Forschungsprodukte & Biochemikalien



Zellkultur & Verbrauchsmaterial



Diagnostik & molekulare Diagnostik



Laborgeräte & Service

Weitere Information auf den folgenden Seiten!  
See the following pages for more information!



### Lieferung & Zahlungsart

siehe unsere [Liefer- und Versandbedingungen](#)

### Zuschläge

- Mindermengenzuschlag
- Trockeneiszuschlag
- Gefahrgutzuschlag
- Expressversand

### SZABO-SCANDIC HandelsgmbH

Quellenstraße 110, A-1100 Wien

T. +43(0)1 489 3961-0

F. +43(0)1 489 3961-7

[mail@szabo-scandic.com](mailto:mail@szabo-scandic.com)

[www.szabo-scandic.com](http://www.szabo-scandic.com)

[linkedin.com/company/szaboscandic](https://www.linkedin.com/company/szaboscandic) 

## EBF1 monoclonal antibody (M01J), clone 1C12

Catalog # : H00001879-M01J

規格 : [ 50 ug ]

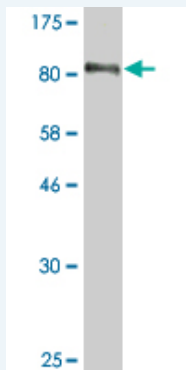
[List All](#)

### Specification

<b>Product Description:</b>	Mouse monoclonal antibody raised against a full length recombinant EBF1.
<b>Immunogen:</b>	EBF1 (AAH38805, 1 a.a. ~ 591 a.a) full-length recombinant protein with GST tag. MW of the GST tag alone is 26 KDa.
<b>Sequence:</b>	MFGIQESIQRSGSSMKEEPLGSGMNAVRTWMQGAGVLDANTAAQSGV GLARAHFEKQPPSNLRKSNFFHFVLALYDRQGQPVEIERTAFVGFVEKE KEANSEKTNNGIHYRLQLLYSNGIRTEQDFYVRLIDSMTKQAIYEGQDKN PEMCRVLLTHEIMCSRCCDKKSCGNRNETPSDPVIIDRFFSKFFLKCQN CLKNAGNPRDMRRFQVVVSTTVNVDGHVLAVSDNMFVHNSKHGRRAR RLDPSEGTPSYLEHATPCIKAISPSEGWTTGGATVIIIIGDNFFDGLQVIFGT MLVWSELITPHAIRVQTPPRHIPGVVEVTL SYKSKQFCKGTPGRFIYTALN EPTIDYGFQRLQKVIPRHPGDPERLPKEVILKRAADLVEALYGMPHNNQEII LKRAADIAEALYSVPRNHNLPALANTSVHAGMMGVNSFSGQLAVNVSE ASQATNQGFTRNSSSVSPHYVPSTTPQQTNYNSVTTSMNGYGSAAMS NLGGSPFTFLNGSAANSPYAIVPSSPTMASSTSLPNSCSSSGIFSFSPAN MVAVKQKSAFAPVVRPQTSPPTCTSTNGNSLQAISGMIVPPM
<b>Host:</b>	Mouse
<b>Reactivity:</b>	Human
<b>Isotype:</b>	IgG1 Kappa

**Quality Control** Antibody Reactive Against Recombinant Protein.

**Testing:**



Western Blot detection against Immunogen (90.75 KDa) .

**Storage Buffer:** In 1x PBS, pH 7.4

**Storage Instruction:** Store at -20°C or lower. Aliquot to avoid repeated freezing and thawing.

**MSDS:** [Download](#)

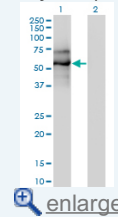
**Datasheet:** [Download](#)

### Applications

**Western Blot (Transfected lysate)**

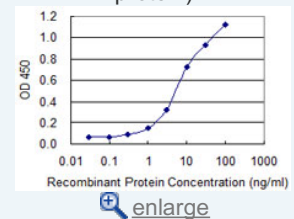
### Application Image

Western Blot (Transfected lysate)

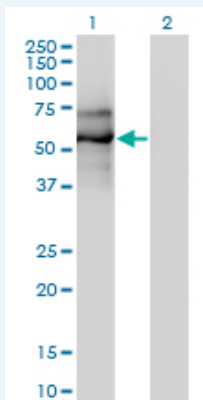


Western Blot (Recombinant protein)

Sandwich ELISA (Recombinant protein)



ELISA



Western Blot analysis of EBF1 expression in transfected 293T cell line by EBF1 monoclonal antibody (M01A), clone 1C12.

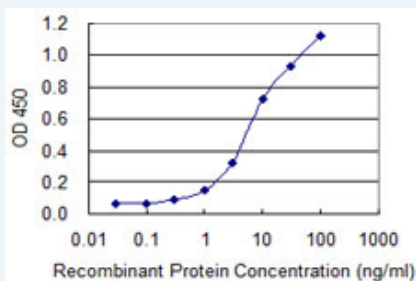
Lane 1: EBF1 transfected lysate(64 KDa).  
Lane 2: Non-transfected lysate.

[Protocol Download](#)

### Western Blot (Recombinant protein)

[Protocol Download](#)

### Sandwich ELISA (Recombinant protein)



Detection limit for recombinant GST tagged EBF1 is 0.3 ng/ml as a capture antibody.

[Protocol Download](#)

### ELISA

### Gene Information

Entrez GeneID: [1879](#)

GeneBank [BC038805](#)

Accession#:

Protein [AAH38805](#)

Accession#:

Gene Name: EBF1

Gene Alias: COE1,EBF,FLJ39389,FLJ41763,O/E-1,OLF1

Gene Description: early B-cell factor 1

Description:

Omim ID: [164343](#)

Gene Ontology: [Hyperlink](#)

Other Designations: Collier, Olf and EBF transcription factor 1,early B-cell factor,olfactory neuronal transcription factor 1

### Related Disease

[Multiple Sclerosis Tobacco Use Disorder](#)

---

[服務條款](#) | [隱私權政策](#) | [著作及商標](#) | [網站地圖](#)

©2016 亞諾法生技股份有限公司 Abnova Corporation. 版權所有.