



# SZABO SCANDIC

Part of Europa Biosite

## Produktinformation



Forschungsprodukte & Biochemikalien



Zellkultur & Verbrauchsmaterial



Diagnostik & molekulare Diagnostik



Laborgeräte & Service

Weitere Information auf den folgenden Seiten!  
See the following pages for more information!



### Lieferung & Zahlungsart

siehe unsere [Liefer- und Versandbedingungen](#)

### Zuschläge

- Mindermengenzuschlag
- Trockeneiszuschlag
- Gefahrgutzuschlag
- Expressversand

### SZABO-SCANDIC HandelsgmbH

Quellenstraße 110, A-1100 Wien

T. +43(0)1 489 3961-0

F. +43(0)1 489 3961-7

[mail@szabo-scandic.com](mailto:mail@szabo-scandic.com)

[www.szabo-scandic.com](http://www.szabo-scandic.com)

[linkedin.com/company/szaboscandic](https://www.linkedin.com/company/szaboscandic) 

## EBF1 monoclonal antibody (M02), clone 1G8

Catalog # : H00001879-M02

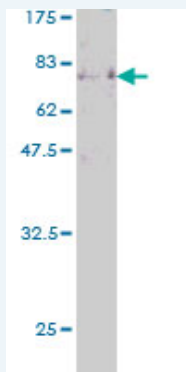
規格 : [ 100 ug ]

List All

### Specification

<b>Product Description:</b>	Mouse monoclonal antibody raised against a full length recombinant EBF1.
<b>Immunogen:</b>	EBF1 (AAH38805, 1 a.a. ~ 591 a.a) full-length recombinant protein with GST tag. MW of the GST tag alone is 26 KDa.
<b>Sequence:</b>	MFGIQESIQRSGSSMKKEPLGSGMNAVRTWMQGAGVLDANTAAQSGV GLARAHFEKQPPSNLRKSNFFHFVLALYDRQGQPVEIERTAFVGFVEKE KEANSEKTNNGIHYRLQLLYSNGIRTEQDFYVRLIDSMTKQAIYEGQDKN PEMCRVLLTHEIMCSRCCDKKSCGNRNETPSDPVIIDRFFSKFFLKCQN CLKNAGNPRDMRRFQVVVSTTVNVDGHVLAVSDNMFVHNSKHGRRAR RLDPSEGTPSYLEHATPCIKAI SPSEGWTTGGATVIIIIDNFFDGLQVIFGT MLVWSELITPHAIRVQTPPRHIPGVVEVTL SYKSKQFCCKGTPGRFIYTALN EPTIDYGFQRLQKVIPRHPGDPERLPKEVILKRAADLVEALYGMPHNNQEII LKRAADIAEALYSVPRNHNLQALANTSVHAGMMGVNSFSGQLAVNVSE ASQATNQGFTRNSSVSPHGYVPSTTPQQTNYNSVTTSMNGYGSAAMS NLGGSPFTFLNGSAANSPYAIVPSSPTMASSTSLPNCSSSSGIFSFSPAN MVAVKQKSAFAPVVRPQTSPPPTCTSTNGNSLQAISGMIVPPM
<b>Host:</b>	Mouse
<b>Reactivity:</b>	Human
<b>Isotype:</b>	IgG1 Kappa

**Quality Control Testing:** Antibody Reactive Against Recombinant Protein.



Western Blot detection against Immunogen (90.75 KDa) .

**Storage Buffer:** In 1x PBS, pH 7.4

**Storage Instruction:** Store at -20°C or lower. Aliquot to avoid repeated freezing and thawing.

**MSDS:** [Download](#)

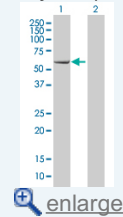
**Datasheet:** [Download](#)

### Publication Reference

1. [The Blk pathway functions as a tumor suppressor in chronic myeloid leukemia stem cells.](#)

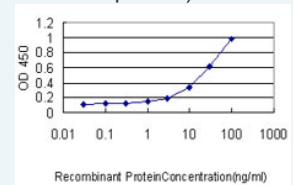
### Application Image

Western Blot (Transfected lysate)



Western Blot (Recombinant protein)

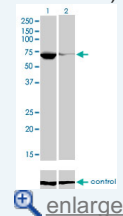
Sandwich ELISA (Recombinant protein)



[enlarge](#)

ELISA

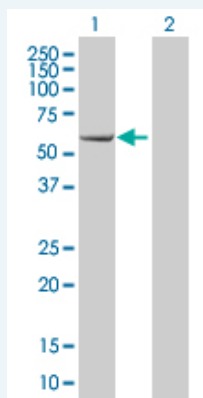
RNAi Knockdown (Antibody validated)



[enlarge](#)

## Applications

### Western Blot (Transfected lysate)



Western Blot analysis of EBF1 expression in transfected 293T cell line by EBF1 monoclonal antibody (M02), clone 1G8.

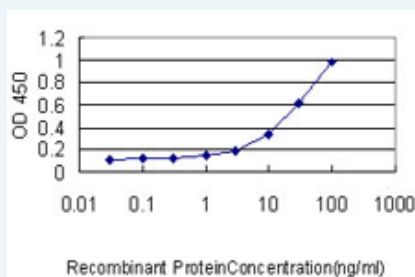
Lane 1: EBF1 transfected lysate (64 kDa).  
Lane 2: Non-transfected lysate.

[Protocol Download](#)

### Western Blot (Recombinant protein)

[Protocol Download](#)

### Sandwich ELISA (Recombinant protein)

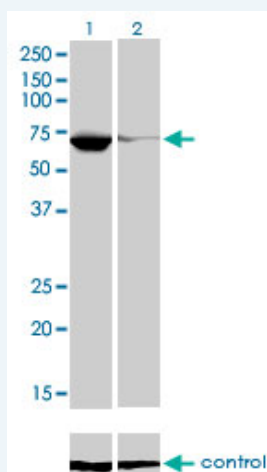


Detection limit for recombinant GST tagged EBF1 is approximately 0.1 ng/ml as a capture antibody.

[Protocol Download](#)

## ELISA

### RNAi Knockdown (Antibody validated)



Western blot analysis of EBF1 over-expressed 293 cell line, cotransfected with EBF1 Validated Chimera RNAi ( Cat # H00001879-R01V ) (Lane 2) or non-transfected control (Lane 1). Blot probed with EBF1 monoclonal antibody (M02), clone 1G8 (Cat # H00001879-M02 ). GAPDH ( 36.1 kDa ) used as specificity and loading control.

## Gene Information

---

**Entrez GeneID:** [1879](#)

**GeneBank  
Accession#:** [BC038805](#)

**Protein  
Accession#:** [AAH38805](#)

**Gene Name:** EBF1

**Gene Alias:** COE1,EBF,FLJ39389,FLJ41763,O/E-1,OLF1

**Gene  
Description:** early B-cell factor 1

**Omim ID:** [164343](#)

**Gene Ontology:** [Hyperlink](#)

**Other  
Designations:** Collier, Olf and EBF transcription factor 1,early B-cell factor,olfactory neuronal transcription factor 1

## Related Disease

---

[Multiple Sclerosis](#) [Tobacco Use Disorder](#)