



SZABO SCANDIC

Part of Europa Biosite

Produktinformation



Forschungsprodukte & Biochemikalien



Zellkultur & Verbrauchsmaterial



Diagnostik & molekulare Diagnostik



Laborgeräte & Service

Weitere Information auf den folgenden Seiten!
See the following pages for more information!



Lieferung & Zahlungsart

siehe unsere [Liefer- und Versandbedingungen](#)

Zuschläge

- Mindermengenzuschlag
- Trockeneiszuschlag
- Gefahrgutzuschlag
- Expressversand

SZABO-SCANDIC HandelsgmbH

Quellenstraße 110, A-1100 Wien

T. +43(0)1 489 3961-0

F. +43(0)1 489 3961-7

mail@szabo-scandic.com

www.szabo-scandic.com

[linkedin.com/company/szaboscandic](https://www.linkedin.com/company/szaboscandic) 

ECE1 purified MaxPab mouse polyclonal antibody (B01P) MaxPab®

Catalog # : H00001889-B01P

規格 : [50 ug]

[List All](#)

Specification

Product Description: Mouse polyclonal antibody raised against a full-length human ECE1 protein.

Immunogen: ECE1 (NP_001388.1, 1 a.a. ~ 770 a.a) full-length human protein.

Sequence:
 MRGWPPPVSALLSALGMSTYKRATLDEEDLVDSLSEGDAYPNGLQVN
 FHSPRSGQRCWAARTQVEKRLVLLVLLAAGLVACLAALGIQYQTRSPS
 VCLSEACVSVTSSILSSMDPTVDPCHDFFSYACGGWIKANPVPDGHRSW
 GTFSNLWEHNQAIKHLLLENSTASVSEAERKAQVYYRACMNETRIEELRAK
 PLMELIERLGGWNITGPWAKDNFQDTLQVVTAHYRTSPFFSVVVSADSK
 NSNSNIQVDQSGGLPSRDYYLNKTENEKVLTYLNYMVQLGKLLGGG
 DEEAIROPQQILD FETALANITIPQEKRRDEELIYHKVTAELQTLAPAIN
 WLPFLNTIFYPVEINESEPIVVYDKEYLEQISTLINTTDRCLLNMYMIWNLVR
 KTSSFLDQRFQDADEKFMVVMYGTKKTCLPRWKF CVSDTENNLGFALG
 PMFVKATFAEDSKSIATEIILEIKKAFFESLSTLKWMDDEETRKSADKADAI
 YNMIGYPNFIKELDKVFNQDYAVPDLVFENAMRFFNF SWRVADQL
 RKAPNRDQWSMTPPMVNAYYSPTKNEIVFPAGILQAPFYTRSSPKALNF
 GGIGVVVGHETHAFDDQGREYDKDGNLRPWWKNSSVEAFKRQTECM
 VEQYSNYSVNGEPVNGRHTLGENIADNGGLKAAAYRAYQNWVKKNGAEH
 SLPTLGLTNNQLFFLGFQVWCSVRTPESSHEGLITDPHSPSRFRVIGSL
 SNSKEFSEHFRCPGSPMPPHKCEVW

Host: Mouse

Reactivity: Human

Quality Control Testing: Antibody reactive against mammalian transfected lysate.

Storage Buffer: In 1x PBS, pH 7.4

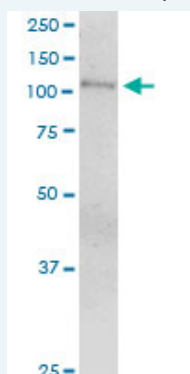
Storage Instruction: Store at -20°C or lower. Aliquot to avoid repeated freezing and thawing.

MSDS:  [Download](#)

Datasheet:  [Download](#)

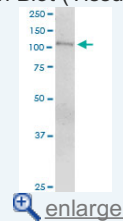
Applications

Western Blot (Tissue lysate)

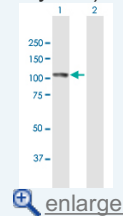


Application Image


Western Blot (Tissue lysate)



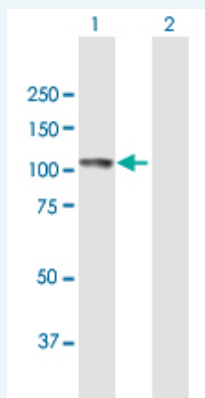
Western Blot (Transfected lysate)



ECE1 MaxPab polyclonal antibody. Western Blot analysis of ECE1 expression in human spleen.

 [Protocol Download](#)

Western Blot (Transfected lysate)



Western Blot analysis of ECE1 expression in transfected 293T cell line ([H00001889-T02](#)) by ECE1 MaxPab polyclonal antibody.

Lane 1: ECE1 transfected lysate(87.20 KDa).

Lane 2: Non-transfected lysate.

 [Protocol Download](#)

Gene Information

Entrez GeneID: [1889](#)

GeneBank [NM_001397.1](#)

Accession#:

Protein [NP_001388.1](#)

Accession#:

Gene Name: ECE1

Gene Alias: ECE

Gene Description: endothelin converting enzyme 1

Omim ID: [145500](#), [600423](#)

Gene Ontology: [Hyperlink](#)

Gene Summary: Endothelin-converting enzyme-1 is involved in the proteolytic processing of endothelin-1 (EDN1; MIM 131240), -2 (EDN2; MIM 131241), and -3 (EDN3; MIM 131242) to biologically active peptides. [supplied by OMIM]

Other [OTTHUMP00000002725](#)

Designations:

Related Disease

[Alzheimer Disease](#) [Alzheimer disease](#) [Arrhythmia](#) [Atherosclerosis](#) [Cardiovascular Diseases](#) [Carotid Artery Diseases](#) [Coronary Artery Disease](#) [Diabetes Complications](#) [Diabetes Mellitus, Type 2](#) [Disease Progression](#) [Edema](#) [Genetic Predisposition to Disease](#) [Hypotension](#) [Orthostatic Kidney Failure](#) [Chronic Liver Cirrhosis](#) [Metabolic Syndrome X](#) [Neoplasms](#) [Osteoporosis](#) [Polycystic kidney disease](#)

... see more

