



# SZABO SCANDIC

Part of Europa Biosite

## Produktinformation



Forschungsprodukte & Biochemikalien



Zellkultur & Verbrauchsmaterial



Diagnostik & molekulare Diagnostik



Laborgeräte & Service

Weitere Information auf den folgenden Seiten!  
See the following pages for more information!



### Lieferung & Zahlungsart

siehe unsere [Liefer- und Versandbedingungen](#)

### Zuschläge

- Mindermengenzuschlag
- Trockeneiszuschlag
- Gefahrgutzuschlag
- Expressversand

### SZABO-SCANDIC HandelsgmbH

Quellenstraße 110, A-1100 Wien

T. +43(0)1 489 3961-0

F. +43(0)1 489 3961-7

[mail@szabo-scandic.com](mailto:mail@szabo-scandic.com)

[www.szabo-scandic.com](http://www.szabo-scandic.com)

[linkedin.com/company/szaboscandic](https://www.linkedin.com/company/szaboscandic) 

## ECE1 293T Cell Transient Overexpression Lysate(Denatured)

Catalog # : H00001889-T02

規格 : [ 100 uL ]

[List All](#)

### Specification

**Transfected Cell Line:** 293T

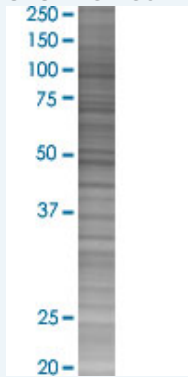
**Plasmid:** pCMV-ECE1 full-length

**Host:** Human

**Theoretical MW (kDa):** 87.2

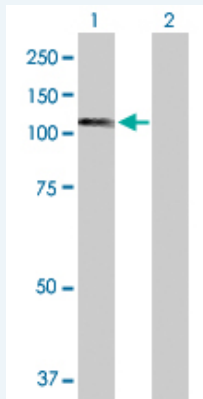
**Quality Control Testing:** Transient overexpression cell lysate was tested with Anti-ECE1 antibody (H00001889-B01) by Western Blots.

#### SDS-PAGE Gel



ECE1 transfected lysate.

#### Western Blot



Lane 1: ECE1 transfected lysate ( 87.20 KDa)

Lane 2: Non-transfected lysate.

**Storage Buffer:** 1X Sample Buffer (50 mM Tris-HCl, 2% SDS, 10% glycerol, 300 mM 2-mercaptoethanol, 0.01% Bromophenol blue)

**Storage Instruction:** Store at -80°C. Aliquot to avoid repeated freezing and thawing.

**MSDS:**  [Download](#)

### Applications

### Application Image

Western Blot

## Western Blot

### Gene Information

Entrez GeneID: [1889](#)

GeneBank [NM\\_001397.1](#)  
Accession#:

Protein [NP\\_001388.1](#)  
Accession#:

Gene Name: ECE1

Gene Alias: ECE

Gene Description: endothelin converting enzyme 1

Omim ID: [145500](#), [600423](#)

Gene Ontology: [Hyperlink](#)

Gene Summary: Endothelin-converting enzyme-1 is involved in the proteolytic processing of endothelin-1 (EDN1; MIM 131240), -2 (EDN2; MIM 131241), and -3 (EDN3; MIM 131242) to biologically active peptides. [supplied by OMIM]

Other Designations: OTTHUMP00000002725

### Related Disease

[Alzheimer Disease](#) [Alzheimer disease](#) [Arrhythmia](#) [Atherosclerosis](#) [Cardiovascular Diseases](#) [Carotid Artery Diseases](#) [Coronary Artery Disease](#) [Diabetes Complications](#) [Diabetes Mellitus, Type 2](#) [Disease Progression](#) [Edema](#) [Genetic Predisposition to Disease](#) [Hypotension](#) [Orthostatic Kidney Failure](#) [Chronic Liver Cirrhosis](#) [Metabolic Syndrome X](#) [Neoplasms](#) [Osteoporosis](#) [Polycystic kidney disease](#)

... see more

[服務條款](#) | [隱私權政策](#) | [著作及商標](#) | [網站地圖](#)

©2016 亞諾法生技股份有限公司 Abnova Corporation. 版權所有.