



SZABO SCANDIC

Part of Europa Biosite

Produktinformation



Forschungsprodukte & Biochemikalien



Zellkultur & Verbrauchsmaterial



Diagnostik & molekulare Diagnostik



Laborgeräte & Service

Weitere Information auf den folgenden Seiten!
See the following pages for more information!



Lieferung & Zahlungsart

siehe unsere [Liefer- und Versandbedingungen](#)

Zuschläge

- Mindermengenzuschlag
- Trockeneiszuschlag
- Gefahrgutzuschlag
- Expressversand

SZABO-SCANDIC HandelsgmbH

Quellenstraße 110, A-1100 Wien

T. +43(0)1 489 3961-0

F. +43(0)1 489 3961-7

mail@szabo-scandic.com

www.szabo-scandic.com

[linkedin.com/company/szaboscandic](https://www.linkedin.com/company/szaboscandic) 



ECGF1 purified MaxPab rabbit polyclonal antibody (D01P) MaxPab®

Catalog # : H00001890-D01P

規格 : [100 ug]

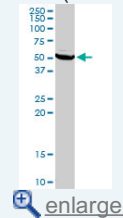
[List All](#)

Specification

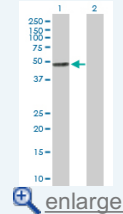
Product Description:	Rabbit polyclonal antibody raised against a full-length human ECGF1 protein.
Immunogen:	ECGF1 (AAH52211.1, 1 a.a. ~ 482 a.a) full-length human protein.
Sequence:	MAALMTPGTGAPPAPGDFSGEGSQGLPDPSPPEPKQLPELIRMKRDGG RLSEADIRGFVAAVVNGSAQGAQIGAMLMAIRLRGMDLEETSVLTQALA QSGQQLEWPEAWRQQLVDKHSTGGVGDVSLVLPALAAACGCKVPMI SGRGLGHTGGTLDKLESIPGFNVIQSPEQMQLLDQAGCCVGGSEQLV PADGILYAARDVTATVDSLPLITASILSKKLVEGLSALVVDVKFGGAAVFP NQQEQARELAKTLVGVGASLGLRVAAALAMDKPLGRCVGHAEVEEALL CMDGAGPPDLRDLVTTLGGALLWLSGHAGTQAQGAARVAAALDDGSA LGRFERMLAAQGVDPGLARALCSGSPAERRQLPRAREQEELLAPADG TVELVRALPLALVHELHAGRSRAGEPLRLGVGAELLVDVGQRLRRGTP WLRVHRDGPALSGPQSRALQEALVSDRAPFAAPLFAELVLPQQ
Host:	Rabbit
Reactivity:	Human
Quality Control Testing:	Antibody reactive against mammalian transfected lysate.
Storage Buffer:	In 1x PBS, pH 7.4
Storage Instruction:	Store at -20°C or lower. Aliquot to avoid repeated freezing and thawing.
MSDS:	 Download
Datasheet:	 Download

Application Image

Western Blot (Tissue lysate)

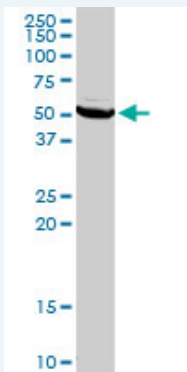


Western Blot (Transfected lysate)



Applications

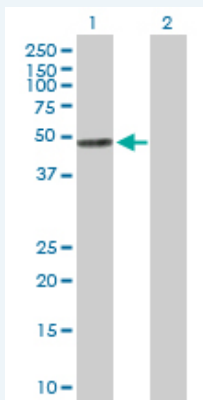
Western Blot (Tissue lysate)



TYMP MaxPab rabbit polyclonal antibody. Western Blot analysis of TYMP expression in human kidney.

 [Protocol Download](#)

Western Blot (Transfected lysate)



Western Blot analysis of TYMP expression in transfected 293T cell line ([H00001890-T01](#)) by TYMP MaxPab polyclonal antibody.

Lane 1: ECGF1 transfected lysate(50.00 KDa).
Lane 2: Non-transfected lysate.

 [Protocol Download](#)

Gene Information

Entrez GeneID: [1890](#)

GeneBank Accession#: [BC052211](#)

Protein Accession#: [AAH52211.1](#)

Gene Name: TYMP

Gene Alias: ECGF1,MNGIE,PDECGF,TP,hPD-ECGF

Gene Description: thymidine phosphorylase

Omim ID: [131222](#), [603041](#)

Gene Ontology: [Hyperlink](#)

Gene Summary: This gene encodes an angiogenic factor which promotes angiogenesis in vivo and stimulates the in vitro growth of a variety of endothelial cells. It has a highly restricted target cell specificity acting only on endothelial cells. Mutations in this gene have been associated with mitochondrial neurogastrointestinal encephalomyopathy. Multiple alternatively spliced variants, encoding the same protein, have been identified. [provided by RefSeq]

Other Designations: OTTHUMP00000196768,OTTHUMP00000196769,endothelial cell growth factor 1 (platelet-derived),gliostatin

Gene Pathway

[Bladder cancer](#) [Drug metabolism - other enzymes](#) [Metabolic pathways](#)
[Pyrimidine metabolism](#)

Related Disease

[Amyotrophic Lateral Sclerosis](#) [Amyotrophic lateral sclerosis](#) [Anoxia](#)
[Cardiovascular Diseases](#) [Chronic Disease](#) [Deafness](#) [Deafness](#) [Diabetes Complications](#)
[Diabetes Mellitus](#) [Diabetes Mellitus, Type 2](#) [Edema](#) [Genetic Predisposition to Disease](#)
[Intestinal Pseudo-Obstruction](#) [Mitochondrial Diseases](#) [Mitochondrial Encephalomyopathies](#)
[Pancreatitis](#) [Recurrence Syndrome](#)

