



SZABO SCANDIC

Part of Europa Biosite

Produktinformation



Forschungsprodukte & Biochemikalien



Zellkultur & Verbrauchsmaterial



Diagnostik & molekulare Diagnostik



Laborgeräte & Service

Weitere Information auf den folgenden Seiten!
See the following pages for more information!



Lieferung & Zahlungsart

siehe unsere [Liefer- und Versandbedingungen](#)

Zuschläge

- Mindermengenzuschlag
- Trockeneiszuschlag
- Gefahrgutzuschlag
- Expressversand

SZABO-SCANDIC HandelsgmbH

Quellenstraße 110, A-1100 Wien

T. +43(0)1 489 3961-0

F. +43(0)1 489 3961-7

mail@szabo-scandic.com

www.szabo-scandic.com

[linkedin.com/company/szaboscandic](https://www.linkedin.com/company/szaboscandic)

ECHS1 purified MaxPab rabbit polyclonal antibody (D01P) MaxPab®

Catalog # : H00001892-D01P

規格 : [100 ug]

[List All](#)

Specification

Product Description: Rabbit polyclonal antibody raised against a full-length human ECHS1 protein.

Immunogen: ECHS1 (NP_004083.2, 1 a.a. ~ 290 a.a) full-length human protein.

Sequence:
 MAALRVLLSCARGPLRPPVRCPAWRPFASGANFEYIIAEKRGKNNTVGLI
 QLNRPKALNALCDGLIDELNQLKIFEEDPAVGAVLTGGDKAFAAGADIK
 EMQNLSFQDCYSSKFLKHWDHLTQVKKPVIAAVNGYAFGGGCELAMMC
 DIYAGEKAQFAQPEILIGTIPGAGGTQRLTRAVGKSLAMEMVLTGDRISA
 QDAKQAGLVSKICPVETLVEEAIQCAEKIASNSKIVAMAKESVNAAFEMT
 LTEGSKLEKLFYSTFATDDRKEGMTAFVEKRKANFKDQ

Host: Rabbit

Reactivity: Human

Quality Control Testing: Antibody reactive against mammalian transfected lysate.

Storage Buffer: In 1x PBS, pH 7.4

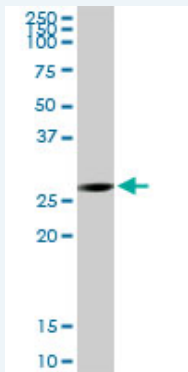
Storage Instruction: Store at -20°C or lower. Aliquot to avoid repeated freezing and thawing.

MSDS:  [Download](#)

Datasheet:  [Download](#)

Applications

Western Blot (Tissue lysate)



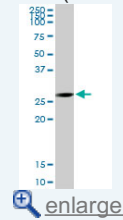
ECHS1 MaxPab rabbit polyclonal antibody. Western Blot analysis of ECHS1 expression in human liver.

 [Protocol Download](#)

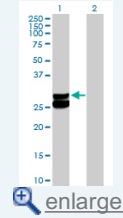
Western Blot (Transfected lysate)

Application Image

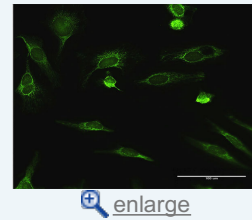
Western Blot (Tissue lysate)

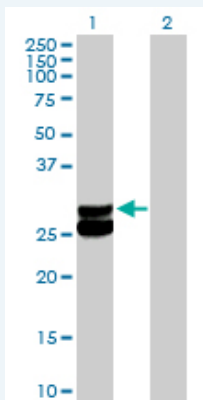


Western Blot (Transfected lysate)



Immunofluorescence



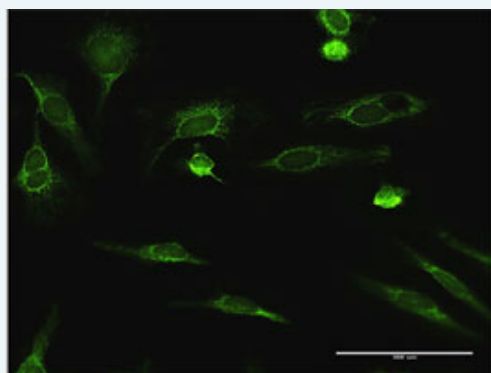


Western Blot analysis of ECHS1 expression in transfected 293T cell line ([H00001892-T01](#)) by ECHS1 MaxPab polyclonal antibody.

Lane 1: ECHS1 transfected lysate(31.40 KDa).
Lane 2: Non-transfected lysate.

[Protocol Download](#)

Immunofluorescence



enlarge this image

Immunofluorescence of purified MaxPab antibody to ECHS1 on HeLa cell. [antibody concentration 10 ug/ml]

[Protocol Download](#)

Gene Information

Entrez GeneID: [1892](#)

GeneBank [NM_004092.2](#)
Accession#:

Protein [NP_004083.2](#)
Accession#:

Gene Name: ECHS1

Gene Alias: SCEH

Gene Description: enoyl Coenzyme A hydratase, short chain, 1, mitochondrial

Omim ID: [602292](#)

Gene Ontology: [Hyperlink](#)

Gene Summary: The protein encoded by this gene functions in the second step of the mitochondrial fatty acid beta-oxidation pathway. It catalyzes the hydration of 2-trans-enoyl-coenzyme A (CoA) intermediates to L-3-hydroxyacyl-CoAs. The gene product is a member of the hydratase/isomerase superfamily. It localizes to the mitochondrial matrix. Transcript variants utilizing alternative transcription initiation sites have been described in the literature. [provided by RefSeq]

Other OTTHUMP00000020811,mitochondrial short-chain enoyl-coenzyme A
Designations: hydratase 1

Gene Pathway

[Benzoate degradation via CoA ligation](#) [beta-Alanine metabolism](#) [Butanoate metabolism](#)
[Caprolactam degradation](#) [Fatty acid elongation in mitochondria](#) [Fatty acid metabolism](#)
[Limonene and pinene degradation](#) [Lysine degradation](#) [Metabolic pathways](#)
[Propanoate metabolism](#) [Tryptophan metabolism](#)
[Valine, leucine and isoleucine degradation](#)

Related Disease

[Cardiovascular Diseases](#) [Diabetes Mellitus, Type 2](#) [Edema](#)

[服務條款](#) | [隱私權政策](#) | [著作及商標](#) | [網站地圖](#)

©2016 亞諾法生技股份有限公司 Abnova Corporation. 版權所有.