



SZABO SCANDIC

Part of Europa Biosite

Produktinformation



Forschungsprodukte & Biochemikalien



Zellkultur & Verbrauchsmaterial



Diagnostik & molekulare Diagnostik



Laborgeräte & Service

Weitere Information auf den folgenden Seiten!
See the following pages for more information!



Lieferung & Zahlungsart

siehe unsere [Liefer- und Versandbedingungen](#)

Zuschläge

- Mindermengenzuschlag
- Trockeneiszuschlag
- Gefahrgutzuschlag
- Expressversand

SZABO-SCANDIC HandelsgmbH

Quellenstraße 110, A-1100 Wien

T. +43(0)1 489 3961-0

F. +43(0)1 489 3961-7

mail@szabo-scandic.com

www.szabo-scandic.com

[linkedin.com/company/szaboscandic](https://www.linkedin.com/company/szaboscandic) 

EDG1 purified MaxPab rabbit polyclonal antibody (D01P) MaxPab®

Catalog # : H00001901-D01P

規格 : [100 ug]

[List All](#)

Specification

Product Description: Rabbit polyclonal antibody raised against a full-length human EDG1 protein.

Immunogen: EDG1 (NP_001391.2, 1 a.a. ~ 382 a.a) full-length human protein.

Sequence:
 MGPTSVPLVKAHRSSVSDYVNYDIIVRHYNYTGKLNISADKENSIKLTSVVF
 ILICCFIILENIFVLLTIWTKKFFHRPMYYFIGNLALSDLLAGVAYTANLLSG
 ATTYKLTPAQWFLREGSMFVALSASVFSLLAIAIERYITMLKMKLHNGSNN
 FRLFLLISACWVISLILGGLPIMGWNCISALSSCSTVLPYHKHYLFCCTTVF
 TLLLLSIMLYCRIYSLVRTRSRRLTFRKNISKASRSSEKSLALLKTVMILSV
 FIACWAPLFILLLLDVGCKVKTCDILFRAEYFLVLAVLNSGTNPIIYTLTNE
 MRRAFIRIMSCCKCPSGDSAGKFKRPIIAGMEFSRSKSDNSSHPQKDEGD
 NPETIMSSGNVNSSS

Host: Rabbit

Reactivity: Human, Mouse

Quality Control Testing: Antibody reactive against mammalian transfected lysate.

Storage Buffer: In 1x PBS, pH 7.4

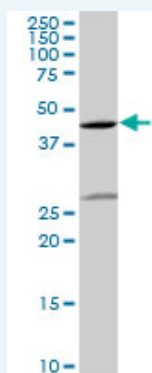
Storage Instruction: Store at -20°C or lower. Aliquot to avoid repeated freezing and thawing.

MSDS: [Download](#)

Datasheet: [Download](#)

Applications

Western Blot (Tissue lysate)



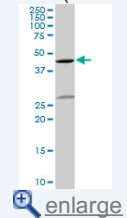
EDG1 MaxPab rabbit polyclonal antibody. Western Blot analysis of EDG1 expression in mouse lung.

[Protocol Download](#)

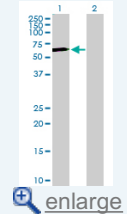
Western Blot (Transfected lysate)

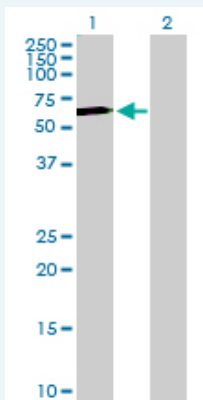
Application Image

Western Blot (Tissue lysate)



Western Blot (Transfected lysate)





Western Blot analysis of S1PR1 expression in transfected 293T cell line ([H00001901-T01](#)) by S1PR1 MaxPab polyclonal antibody.

Lane 1: EDG1 transfected lysate(42.80 KDa).
Lane 2: Non-transfected lysate.

[Protocol Download](#)

Gene Information

Entrez GeneID: [1901](#)

GeneBank Accession#: [NM_001400](#)

Protein Accession#: [NP_001391.2](#)

Gene Name: S1PR1

Gene Alias: CHEDG1,D1S3362,ECGF1,EDG-1,EDG1,FLJ58121,S1P1

Gene Description: sphingosine-1-phosphate receptor 1

Omim ID: [601974](#)

Gene Ontology: [Hyperlink](#)

Gene Summary: The protein encoded by this gene is structurally similar to G protein-coupled receptors and is highly expressed in endothelial cells. It binds the ligand sphingosine-1-phosphate with high affinity and high specificity, and suggested to be involved in the processes that regulate the differentiation of endothelial cells. Activation of this receptor induces cell-cell adhesion. [provided by RefSeq]

Other Designations: G protein-coupled sphingolipid receptor,OTTHUMP00000012525,endothelial differentiation, sphingolipid G-protein-coupled receptor, 1,sphingosine 1-phosphate receptor EDG1

Gene Pathway

[Neuroactive ligand-receptor interaction](#)

Related Disease

[Asthma](#) [Atherosclerosis](#) [Brain Ischemia](#) [Calcinosis](#) [Cardiovascular Diseases](#) [Coronary Artery Disease](#) [Coronary Disease](#) [Diabetes Mellitus, Type 2](#) [Edema](#) [Genetic Predisposition to Disease](#) [Myocardial Infarction](#) [Stroke](#)

