



SZABO SCANDIC

Part of Europa Biosite

Produktinformation



Forschungsprodukte & Biochemikalien



Zellkultur & Verbrauchsmaterial



Diagnostik & molekulare Diagnostik



Laborgeräte & Service

Weitere Information auf den folgenden Seiten!
See the following pages for more information!



Lieferung & Zahlungsart

siehe unsere [Liefer- und Versandbedingungen](#)

Zuschläge

- Mindermengenzuschlag
- Trockeneiszuschlag
- Gefahrgutzuschlag
- Expressversand

SZABO-SCANDIC HandelsgmbH

Quellenstraße 110, A-1100 Wien

T. +43(0)1 489 3961-0

F. +43(0)1 489 3961-7

mail@szabo-scandic.com

www.szabo-scandic.com

[linkedin.com/company/szaboscandic](https://www.linkedin.com/company/szaboscandic) 

EDG1 monoclonal antibody (M01), clone 2E12

Catalog # : H00001901-M01

規格 : [100 ug]

[List All](#)

Specification

Product Description: Mouse monoclonal antibody raised against a partial recombinant EDG1.

Immunogen: EDG1 (AAH18650, 1 a.a. ~ 47 a.a) partial recombinant protein with GST tag. MW of the GST tag alone is 26 KDa.

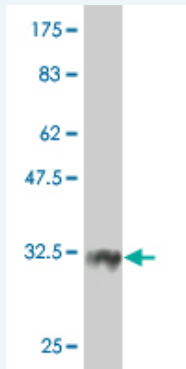
Sequence: MGPTSVPLVKAHRSSVSDYVNYDIIVRHNYTGKLNISADKENSIKL

Host: Mouse

Reactivity: Human

Isotype: IgG1 Kappa

Quality Control Testing: Antibody Reactive Against Recombinant Protein.



Western Blot detection against Immunogen (30.91 KDa) .

Storage Buffer: In 1x PBS, pH 7.4

Storage Instruction: Store at -20°C or lower. Aliquot to avoid repeated freezing and thawing.

MSDS: [Download](#)

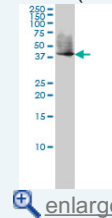
Datasheet: [Download](#)

Applications

Western Blot (Cell lysate)

Application Image

Western Blot (Cell lysate)

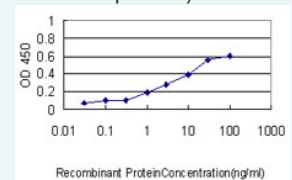


Western Blot (Transfected lysate)



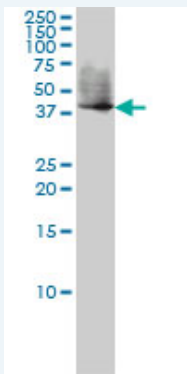
Western Blot (Recombinant protein)

Sandwich ELISA (Recombinant protein)



[enlarge](#)

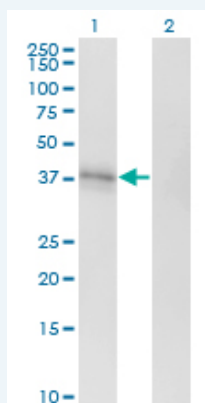
ELISA



EDG1 monoclonal antibody (M01), clone 2E12 Western Blot analysis of EDG1 expression in Jurkat (Cat # L017V1).

[Protocol Download](#)

Western Blot (Transfected lysate)



Western Blot analysis of EDG1 expression in transfected 293T cell line by EDG1 monoclonal antibody (M01), clone 2E12.

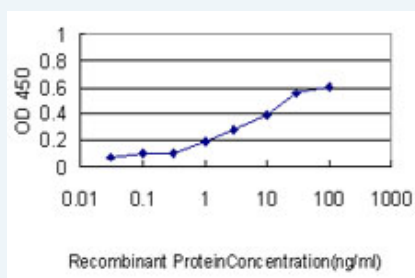
Lane 1: EDG1 transfected lysate(42.8 KDa).
Lane 2: Non-transfected lysate.

[Protocol Download](#)

Western Blot (Recombinant protein)

[Protocol Download](#)

Sandwich ELISA (Recombinant protein)



Detection limit for recombinant GST tagged EDG1 is approximately 0.1ng/ml as a capture antibody.

[Protocol Download](#)

ELISA

Gene Information

Entrez GeneID: [1901](#)

GeneBank [BC018650](#)
Accession#:

Protein [AAH18650](#)
Accession#:

Gene Name: S1PR1

Gene Alias: CHEDG1,D1S3362,ECGF1,EDG-1,EDG1,FLJ58121,S1P1

Gene Description: sphingosine-1-phosphate receptor 1

Omim ID: [601974](#)

Gene Ontology: [Hyperlink](#)

Gene Summary: The protein encoded by this gene is structurally similar to G protein-coupled receptors and is highly expressed in endothelial cells. It binds the ligand sphingosine-1-phosphate with high affinity and high specificity, and suggested to be involved in the processes that regulate the differentiation of endothelial cells. Activation of this receptor induces cell-cell adhesion. [provided by RefSeq]

Other Designations: G protein-coupled sphingolipid receptor, OTTHUMP00000012525, endothelial differentiation, sphingolipid G-protein-coupled receptor, 1, sphingosine 1-phosphate receptor EDG1

Gene Pathway

[Neuroactive ligand-receptor interaction](#)

Related Disease

[Asthma](#) [Atherosclerosis](#) [Brain Ischemia](#) [Calcinosis](#) [Cardiovascular Diseases](#) [Coronary Artery Disease](#) [Coronary Disease](#) [Diabetes Mellitus, Type 2](#) [Edema](#) [Genetic Predisposition to Disease](#) [Myocardial Infarction](#) [Stroke](#)

[服務條款](#) | [隱私權政策](#) | [著作及商標](#) | [網站地圖](#)

©2016 亞諾法生技股份有限公司 Abnova Corporation. 版權所有.