



SZABO SCANDIC

Part of Europa Biosite

Produktinformation



Forschungsprodukte & Biochemikalien



Zellkultur & Verbrauchsmaterial



Diagnostik & molekulare Diagnostik



Laborgeräte & Service

Weitere Information auf den folgenden Seiten!
See the following pages for more information!



Lieferung & Zahlungsart

siehe unsere [Liefer- und Versandbedingungen](#)

Zuschläge

- Mindermengenzuschlag
- Trockeneiszuschlag
- Gefahrgutzuschlag
- Expressversand

SZABO-SCANDIC HandelsgmbH

Quellenstraße 110, A-1100 Wien

T. +43(0)1 489 3961-0

F. +43(0)1 489 3961-7

mail@szabo-scandic.com

www.szabo-scandic.com

[linkedin.com/company/szaboscandic](https://www.linkedin.com/company/szaboscandic) 

EDG1 monoclonal antibody (M03), clone 1F11

Catalog # : H00001901-M03

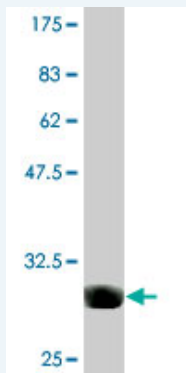
規格 : [100 ug]

[List All](#)

Specification

Product Description:	Mouse monoclonal antibody raised against a partial recombinant EDG1.
Immunogen:	EDG1 (AAH18650, 1 a.a. ~ 47 a.a) partial recombinant protein with GST tag. MW of the GST tag alone is 26 KDa.
Sequence:	MGPTSVPLVKAHRSSVSDYVNYDIIVRHNYTGKLNISADKENSIKL
Host:	Mouse
Reactivity:	Human
Isotype:	IgG3 Kappa

Quality Control Testing: Antibody Reactive Against Recombinant Protein.



Western Blot detection against Immunogen (30.91 KDa) .

Storage Buffer: In 1x PBS, pH 7.4

Storage Instruction: Store at -20°C or lower. Aliquot to avoid repeated freezing and thawing.

MSDS: [Download](#)

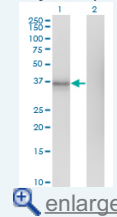
Datasheet: [Download](#)

Applications

Western Blot (Transfected lysate)

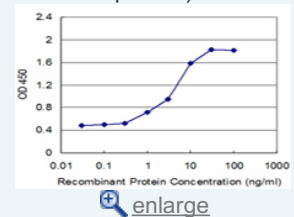
Application Image

Western Blot (Transfected lysate)

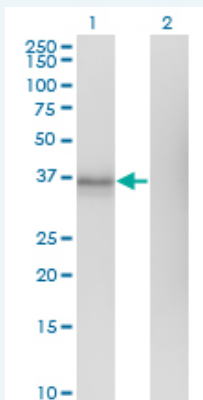


Western Blot (Recombinant protein)

Sandwich ELISA (Recombinant protein)



ELISA



Western Blot analysis of EDG1 expression in transfected 293T cell line by EDG1 monoclonal antibody (M03), clone 1F11.

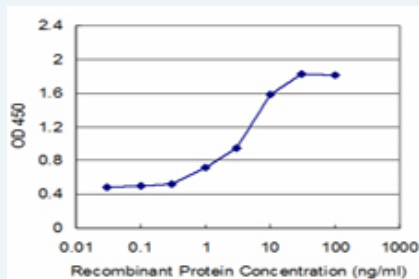
Lane 1: EDG1 transfected lysate(42.8 KDa).
Lane 2: Non-transfected lysate.

[Protocol Download](#)

Western Blot (Recombinant protein)

[Protocol Download](#)

Sandwich ELISA (Recombinant protein)



Detection limit for recombinant GST tagged EDG1 is approximately 0.3ng/ml as a capture antibody.

[Protocol Download](#)

ELISA

Gene Information

Entrez GeneID: [1901](#)

GeneBank [BC018650](#)
Accession#:

Protein [AAH18650](#)
Accession#:

Gene Name: S1PR1

Gene Alias: CHEDG1,D1S3362,ECGF1,EDG-1,EDG1,FLJ58121,S1P1

Gene Description: sphingosine-1-phosphate receptor 1

Omim ID: [601974](#)

Gene Ontology: [Hyperlink](#)

Gene Summary: The protein encoded by this gene is structurally similar to G protein-coupled receptors and is highly expressed in endothelial cells. It binds the ligand sphingosine-1-phosphate with high affinity and high specificity, and suggested to be involved in the processes that regulate the differentiation of endothelial cells. Activation of this receptor induces

cell-cell adhesion. [provided by RefSeq]

Other G protein-coupled sphingolipid
Designations: receptor, OTTHUMP00000012525, endothelial differentiation,
sphingolipid G-protein-coupled receptor, 1, sphingosine 1-phosphate
receptor EDG1

Gene Pathway

[Neuroactive ligand-receptor interaction](#)

Related Disease

[Asthma](#) [Atherosclerosis](#) [Brain Ischemia](#) [Calcinosis](#) [Cardiovascular Diseases](#)
[Coronary Artery Disease](#) [Coronary Disease](#) [Diabetes Mellitus, Type 2](#) [Edema](#)
[Genetic Predisposition to Disease](#) [Myocardial Infarction](#) [Stroke](#)

[服務條款](#) | [隱私權政策](#) | [著作及商標](#) | [網站地圖](#)

©2016 亞諾法生技股份有限公司 Abnova Corporation. 版權所有.