



SZABO SCANDIC

Part of Europa Biosite

Produktinformation



Forschungsprodukte & Biochemikalien



Zellkultur & Verbrauchsmaterial



Diagnostik & molekulare Diagnostik



Laborgeräte & Service

Weitere Information auf den folgenden Seiten!
See the following pages for more information!



Lieferung & Zahlungsart

siehe unsere [Liefer- und Versandbedingungen](#)

Zuschläge

- Mindermengenzuschlag
- Trockeneiszuschlag
- Gefahrgutzuschlag
- Expressversand

SZABO-SCANDIC HandelsgmbH

Quellenstraße 110, A-1100 Wien

T. +43(0)1 489 3961-0

F. +43(0)1 489 3961-7

mail@szabo-scandic.com

www.szabo-scandic.com

[linkedin.com/company/szaboscandic](https://www.linkedin.com/company/szaboscandic) 

EDG3 monoclonal antibody (M02), clone 2G11

Catalog # : H00001903-M02

規格 : [100 ug]

[List All](#)

Specification

Product Description: Mouse monoclonal antibody raised against a partial recombinant EDG3.

Immunogen: EDG3 (NP_005217.2, 302 a.a. ~ 378 a.a) partial recombinant protein with GST tag. MW of the GST tag alone is 26 KDa.

Sequence: SKEMRRAFFRLVCNCLVRGRGARASPIQPALDPSRSKSSSSNNSHSPK VKEDLPHTAPSSCIMDKNAALQNGIFCN

Host: Mouse

Reactivity: Human

Isotype: IgG1 Kappa

Quality Control Testing: Antibody Reactive Against Recombinant Protein.

Storage Buffer: In 1x PBS, pH 7.4

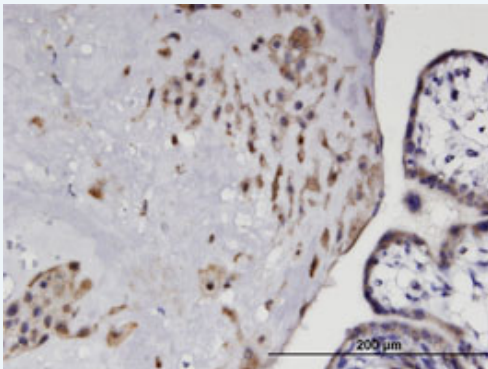
Storage Instruction: Store at -20°C or lower. Aliquot to avoid repeated freezing and thawing.

MSDS: [Download](#)

Datasheet: [Download](#)

Applications

Immunohistochemistry (Formalin/PFA-fixed paraffin-embedded sections)



[enlarge this image](#)

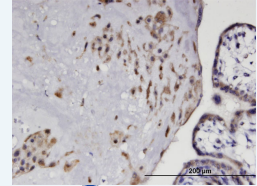
Immunoperoxidase of monoclonal antibody to S1PR3 on formalin-fixed paraffin-embedded human placenta. [antibody concentration 3 ug/ml]

[Protocol Download](#)

Sandwich ELISA (Recombinant protein)

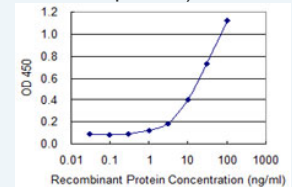
Application Image

Immunohistochemistry (Formalin/PFA-fixed paraffin-embedded sections)



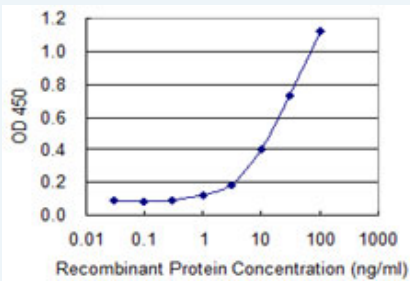
[enlarge](#)

Sandwich ELISA (Recombinant protein)



[enlarge](#)

ELISA



Detection limit for recombinant GST tagged S1PR3 is 0.3 ng/ml as a capture antibody.

 [Protocol Download](#)

ELISA

Gene Information

Entrez GeneID: [1903](#)

GeneBank [NM_005226](#)

Accession#:

Protein [NP_005217.2](#)

Accession#:

Gene Name: S1PR3

Gene Alias: EDG-3,EDG3,FLJ37523,FLJ93220,LPB3,MGC71696,S1P3

Gene Description: sphingosine-1-phosphate receptor 3

Omim ID: [601965](#)

Gene Ontology: [Hyperlink](#)

Gene Summary: This gene encodes a member of the EDG family of receptors, which are G protein-coupled receptors. This protein has been identified as a functional receptor for sphingosine 1-phosphate and likely contributes to the regulation of angiogenesis and vascular endothelial cell function. [provided by RefSeq]

Other Designations: G protein-coupled receptor, endothelial differentiation gene-3,OTTHUMP00000021612,S1P receptor EDG3,endothelial differentiation, sphingolipid G-protein-coupled receptor, 3,sphingosine 1-phosphate receptor 3

Gene Pathway

[Neuroactive ligand-receptor interaction](#)

Related Disease

[Cardiovascular Diseases](#) [Diabetes Mellitus, Type 2](#) [Edema](#)