



SZABO SCANDIC

Part of Europa Biosite

Produktinformation



Forschungsprodukte & Biochemikalien



Zellkultur & Verbrauchsmaterial



Diagnostik & molekulare Diagnostik



Laborgeräte & Service

Weitere Information auf den folgenden Seiten!
See the following pages for more information!



Lieferung & Zahlungsart

siehe unsere [Liefer- und Versandbedingungen](#)

Zuschläge

- Mindermengenzuschlag
- Trockeneiszuschlag
- Gefahrgutzuschlag
- Expressversand

SZABO-SCANDIC HandelsgmbH

Quellenstraße 110, A-1100 Wien

T. +43(0)1 489 3961-0

F. +43(0)1 489 3961-7

mail@szabo-scandic.com

www.szabo-scandic.com

[linkedin.com/company/szaboscandic](https://www.linkedin.com/company/szaboscandic) 

EDN1 purified MaxPab mouse polyclonal antibody (B01P) MaxPab®

Catalog # : H00001906-B01P

規格 : [50 ug]

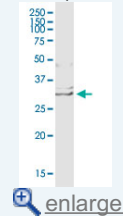
[List All](#)

Specification

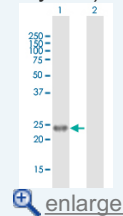
Product Description:	Mouse polyclonal antibody raised against a full-length human EDN1 protein.
Immunogen:	EDN1 (AAH09720.1, 1 a.a. ~ 212 a.a) full-length human protein.
Sequence:	MDYLLMIFSLLFVACQGAPETA VLGAELSAVGENGGEKPTSPPPWRLRR SKRCSSSLMDKECVYFCHLDIIWVNTPEHVVPYGLGSPRSKRALENLLP TKATDRENRCQCASQKDKKCNFCQAGKELRAEDIMEKDWNHKKGK DCSKLGKKCIYQQLVVRGRKIRRSSEEHLRQTRSETMRNSVKSSFHDPKL KGNPSRERYVTHNRAHW
Host:	Mouse
Reactivity:	Human
Quality Control Testing:	Antibody reactive against mammalian transfected lysate.
Storage Buffer:	In 1x PBS, pH 7.4
Storage Instruction:	Store at -20°C or lower. Aliquot to avoid repeated freezing and thawing.
MSDS:	Download
Datasheet:	Download

Application Image

Western Blot (Tissue lysate)

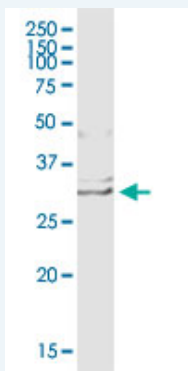


Western Blot (Transfected lysate)



Applications

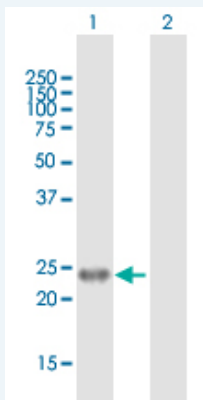
Western Blot (Tissue lysate)



EDN1 MaxPab polyclonal antibody. Western Blot analysis of EDN1 expression in human placenta.

[Protocol Download](#)

Western Blot (Transfected lysate)



Western Blot analysis of EDN1 expression in transfected 293T cell line ([H00001906-T01](#)) by EDN1 MaxPab polyclonal antibody.

Lane 1: EDN1 transfected lysate(23.32 KDa).
Lane 2: Non-transfected lysate.

 [Protocol Download](#)

Gene Information

Entrez GeneID: [1906](#)

GeneBank [NM_001955](#)
Accession#:

Protein [AAH09720.1](#)
Accession#:

Gene Name: EDN1

Gene Alias: ET1,HDLCQ7

Gene [endothelin 1](#)
Description:

Omim ID: [131240](#)

Gene Ontology: [Hyperlink](#)

Other [OTTHUMP00000016038,OTTHUMP00000039245](#)
Designations:

Gene Pathway

[Hypertrophic cardiomyopathy \(HCM\)](#) [Melanogenesis](#)
[Neuroactive ligand-receptor interaction](#) [Vascular smooth muscle contraction](#)

Related Disease

[Abortion, Spontaneous](#) [Albuminuria](#) [Altitude Sickness](#) [Alzheimer Disease](#)
[Alzheimer disease](#) [Anemia, Sickle Cell](#) [Anemia, sickle cell](#) [Angina Pectoris, Variant](#) [Anoxia](#)
[Arrhythmias](#) [Cardiac Arthritis](#) [Rheumatoid](#) [Asthma](#) [Asthma](#) [Atherosclerosis](#)
[Atherosclerosis](#) [Auditory Threshold](#) [Brain Infarction](#) [Brain Ischemia](#)
[Bronchial Hyperreactivity](#)

... see more