



SZABO SCANDIC

Part of Europa Biosite

Produktinformation



Forschungsprodukte & Biochemikalien



Zellkultur & Verbrauchsmaterial



Diagnostik & molekulare Diagnostik



Laborgeräte & Service

Weitere Information auf den folgenden Seiten!
See the following pages for more information!



Lieferung & Zahlungsart

siehe unsere [Liefer- und Versandbedingungen](#)

Zuschläge

- Mindermengenzuschlag
- Trockeneiszuschlag
- Gefahrgutzuschlag
- Expressversand

SZABO-SCANDIC HandelsgmbH

Quellenstraße 110, A-1100 Wien

T. +43(0)1 489 3961-0

F. +43(0)1 489 3961-7

mail@szabo-scandic.com

www.szabo-scandic.com

[linkedin.com/company/szaboscandic](https://www.linkedin.com/company/szaboscandic) 

EDN1 293T Cell Transient Overexpression Lysate(Denatured)

Catalog # : H00001906-T01

規格 : [100 uL]

[List All](#)

Specification

Transfected Cell Line: 293T

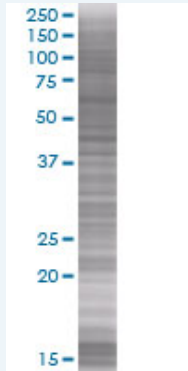
Plasmid: pCMV-EDN1 full-length

Host: Human

Theoretical MW (kDa): 24.4

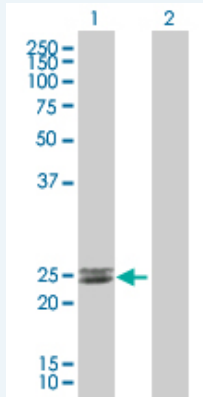
Quality Control Testing: Transient overexpression cell lysate was tested with Anti-EDN1 antibody (H00001906-B01) by Western Blots.

SDS-PAGE Gel



EDN1 transfected lysate

Western Blot



Lane 1: EDN1 transfected lysate (24.4 KDa).

Lane 2: Non-transfected lysate.

Storage Buffer: 1X Sample Buffer (50 mM Tris-HCl, 2% SDS, 10% glycerol, 300 mM 2-mercaptoethanol, 0.01% Bromophenol blue)

Storage Instruction: Store at -80°C. Aliquot to avoid repeated freezing and thawing.

MSDS:  [Download](#)

Applications

Western Blot

Gene Information

Entrez GeneID: [1906](#)

GeneBank Accession#: [NM_001955](#)

Protein Accession#: [NP_001946](#)

Gene Name: EDN1

Gene Alias: ET1,HDLCQ7

Gene Description: endothelin 1

Omim ID: [131240](#)

Gene Ontology: [Hyperlink](#)

Other Designations: OTTHUMP00000016038,OTTHUMP00000039245

Gene Pathway

[Hypertrophic cardiomyopathy \(HCM\)](#) [Melanogenesis](#)
[Neuroactive ligand-receptor interaction](#) [Vascular smooth muscle contraction](#)

Related Disease

[Abortion](#), [Spontaneous Albuminuria](#) [Altitude Sickness](#) [Alzheimer Disease](#)
[Alzheimer disease](#) [Anemia](#), [Sickle Cell Anemia](#), [sickle cell](#) [Angina Pectoris](#), [Variant Anoxia](#)
[Arrhythmias](#), [Cardiac Arthritis](#), [Rheumatoid Asthma](#) [Asthma](#) [Atherosclerosis](#)
[Atherosclerosis](#) [Auditory Threshold](#) [Brain Infarction](#) [Brain Ischemia](#)
[Bronchial Hyperreactivity](#)

... see more