



SZABO SCANDIC

Part of Europa Biosite

Produktinformation



Forschungsprodukte & Biochemikalien



Zellkultur & Verbrauchsmaterial



Diagnostik & molekulare Diagnostik



Laborgeräte & Service

Weitere Information auf den folgenden Seiten!
See the following pages for more information!



Lieferung & Zahlungsart

siehe unsere [Liefer- und Versandbedingungen](#)

Zuschläge

- Mindermengenzuschlag
- Trockeneiszuschlag
- Gefahrgutzuschlag
- Expressversand

SZABO-SCANDIC HandelsgmbH

Quellenstraße 110, A-1100 Wien

T. +43(0)1 489 3961-0

F. +43(0)1 489 3961-7

mail@szabo-scandic.com

www.szabo-scandic.com

[linkedin.com/company/szaboscandic](https://www.linkedin.com/company/szaboscandic) 



EDN2 purified MaxPab mouse polyclonal antibody (B01P) MaxPab®

Catalog # : H00001907-B01P

規格 : [50 ug]

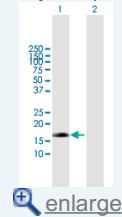
List All


Specification

Product Description:	Mouse polyclonal antibody raised against a full-length human EDN2 protein.
Immunogen:	EDN2 (NP_001947.1, 1 a.a. ~ 178 a.a) full-length human protein.
Sequence:	MVSVPTTWCSVALALLVALHEGKGQAAATLEQPASSSSHAQGTHLRLRR CSCSSWLDKECVYFCHLDIIVNTPEQTAPYGLGNPPRRRRRSLPRRC QCSSARDPACATFCLRRPWTEAGAVPSRKSPADVFQTGKTGATTGELL QRLRDISTVKSLFAKRQQEAMREPRSTHSRWRKR
Host:	Mouse
Reactivity:	Human
Quality Control Testing:	Antibody reactive against mammalian transfected lysate.
Storage Buffer:	In 1x PBS, pH 7.4
Storage Instruction:	Store at -20°C or lower. Aliquot to avoid repeated freezing and thawing.
MSDS:	 Download
Datasheet:	 Download

Application Image

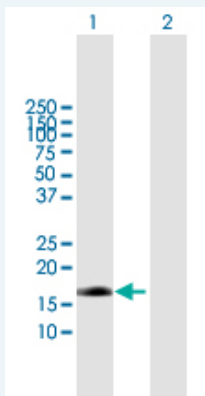
Western Blot (Transfected lysate)



 enlarge

Applications

Western Blot (Transfected lysate)



Western Blot analysis of EDN2 expression in transfected 293T cell line ([H00001907-T01](#)) by EDN2 MaxPab polyclonal antibody.

Lane 1: EDN2 transfected lysate (19.58 kDa).
Lane 2: Non-transfected lysate.

 [Protocol Download](#)

Gene Information

Entrez GeneID: [1907](#)

GeneBank Accession#: [NM_001956](#)

Protein Accession#: [NP_001947.1](#)

Gene Name: EDN2

Gene Alias: ET2,PPET2

Gene Description: endothelin 2

Omim ID: [131241](#)

Gene Ontology: [Hyperlink](#)

Gene Summary: This gene encodes a member of the endothelin protein family of secretory vasoconstrictive peptides. The preproprotein is processed to a short mature form which functions as a ligand for the endothelin receptors that initiate intracellular signaling events. This gene product is involved in a wide range of biological processes, such as hypertension and ovulation. [provided by RefSeq]

Other Designations: OTTHUMP00000007075,preproendothelin 2

Gene Pathway

[Hypertrophic cardiomyopathy \(HCM\)](#) [Neuroactive ligand-receptor interaction](#)
[Vascular smooth muscle contraction](#)

Related Disease

[Atrial Fibrillation](#) [Cardiomyopathy](#) [Hypertrophic Cardiovascular Diseases](#)
[Connective Tissue Diseases](#) [Cystic Fibrosis](#) [Diabetes Mellitus, Type 2](#)
[Ductus Arteriosus, Patent](#) [Edema Fetal Diseases](#) [Genetic Predisposition to Disease](#)
[Infant, Premature, Diseases](#) [Infection](#) [Inflammation](#) [Musculoskeletal Diseases](#)
[Pregnancy Complications](#) [Hematologic](#) [Premature Birth](#) [Skin Diseases](#)