



SZABO SCANDIC

Part of Europa Biosite

Produktinformation



Forschungsprodukte & Biochemikalien



Zellkultur & Verbrauchsmaterial



Diagnostik & molekulare Diagnostik



Laborgeräte & Service

Weitere Information auf den folgenden Seiten!
See the following pages for more information!



Lieferung & Zahlungsart

siehe unsere [Liefer- und Versandbedingungen](#)

Zuschläge

- Mindermengenzuschlag
- Trockeneiszuschlag
- Gefahrgutzuschlag
- Expressversand

SZABO-SCANDIC HandelsgmbH

Quellenstraße 110, A-1100 Wien

T. +43(0)1 489 3961-0

F. +43(0)1 489 3961-7

mail@szabo-scandic.com

www.szabo-scandic.com

[linkedin.com/company/szaboscandic](https://www.linkedin.com/company/szaboscandic) 

EDN2 monoclonal antibody (M01), clone 3B4-1C5

Catalog # : H00001907-M01

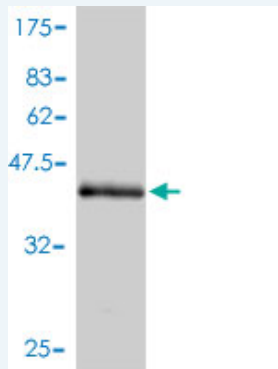
規格 : [100 ug]

[List All](#)

Specification

Product Description:	Mouse monoclonal antibody raised against a full length recombinant EDN2.
Immunogen:	EDN2 (AAH34393, 1 a.a. ~ 178 a.a) full-length recombinant protein with GST tag. MW of the GST tag alone is 26 KDa.
Sequence:	MVSVPTTWCSVALALLVALHEGKGQAAATLEQPASSSHAQGTHLRLRR CSCSSWLDKECVYFCHLDIIVWNTPEQTAPYGLGNPPRRRRRSLPRRC QCSSARDPACATFCLRRPWTEAGAVPSRKSPADVFTGKTGATTGELL QRLRDISTVKSLFAKRQEQEAMREPRSTHSRWKR
Host:	Mouse
Reactivity:	Human
Isotype:	IgG2b kappa

Quality Control Testing: Antibody Reactive Against Recombinant Protein.



Western Blot detection against Immunogen (45.32 KDa) .

Storage Buffer: In 1x PBS, pH 7.4

Storage Instruction: Store at -20°C or lower. Aliquot to avoid repeated freezing and thawing.

MSDS: [Download](#)

Datasheet: [Download](#)

Publication Reference

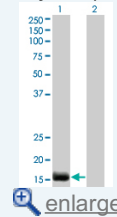
1. [Estrogen and progesterone regulate expression of the endothelins in the rhesus macaque endometrium.](#)
Keator CS, Mah K, Ohm L, Slayden OD. Hum Reprod. 2011 Apr 19. [Epub ahead of print]

Applications

Western Blot (Transfected lysate)

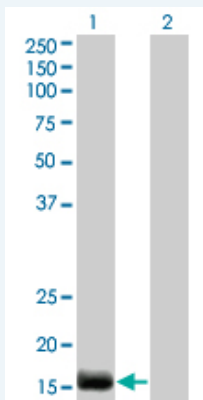
Application Image

Western Blot (Transfected lysate)



Western Blot (Recombinant protein)

ELISA



Western Blot analysis of EDN2 expression in transfected 293T cell line by EDN2 monoclonal antibody (M01), clone 3B4-1C5.

Lane 1: EDN2 transfected lysate(20 KDa).
Lane 2: Non-transfected lysate.

[Protocol Download](#)

Western Blot (Recombinant protein)

[Protocol Download](#)

ELISA

Gene Information

Entrez GeneID: [1907](#)

GeneBank [BC034393](#)
Accession#:

Protein [AAH34393](#)
Accession#:

Gene Name: EDN2

Gene Alias: ET2,PPET2

Gene [endothelin 2](#)
Description:

Omim ID: [131241](#)

Gene Ontology: [Hyperlink](#)

Gene Summary: This gene encodes a member of the endothelin protein family of secretory vasoconstrictive peptides. The preproprotein is processed to a short mature form which functions as a ligand for the endothelin receptors that initiate intracellular signaling events. This gene product is involved in a wide range of biological processes, such as hypertension and ovulation. [provided by RefSeq]

Other [OTTHUMP00000007075,preproendothelin 2](#)
Designations:

Gene Pathway

[Hypertrophic cardiomyopathy \(HCM\)](#) [Neuroactive ligand-receptor interaction](#)
[Vascular smooth muscle contraction](#)

Related Disease

[Atrial Fibrillation](#) [Cardiomyopathy, Hypertrophic Cardiovascular Diseases](#)
[Connective Tissue Diseases](#) [Cystic Fibrosis](#) [Diabetes Mellitus, Type 2](#)
[Ductus Arteriosus, Patent](#) [Edema](#) [Fetal Diseases](#) [Genetic Predisposition to Disease](#)

