



SZABO SCANDIC

Part of Europa Biosite

Produktinformation



Forschungsprodukte & Biochemikalien



Zellkultur & Verbrauchsmaterial



Diagnostik & molekulare Diagnostik



Laborgeräte & Service

Weitere Information auf den folgenden Seiten!
See the following pages for more information!



Lieferung & Zahlungsart

siehe unsere [Liefer- und Versandbedingungen](#)

Zuschläge

- Mindermengenzuschlag
- Trockeneiszuschlag
- Gefahrgutzuschlag
- Expressversand

SZABO-SCANDIC HandelsgmbH

Quellenstraße 110, A-1100 Wien

T. +43(0)1 489 3961-0

F. +43(0)1 489 3961-7

mail@szabo-scandic.com

www.szabo-scandic.com

[linkedin.com/company/szaboscandic](https://www.linkedin.com/company/szaboscandic) 

EDN2 293T Cell Transient Overexpression Lysate(Denatured)

Catalog # : H00001907-T01

規格 : [100 uL]

[List All](#)

Specification

Transfected Cell Line: 293T

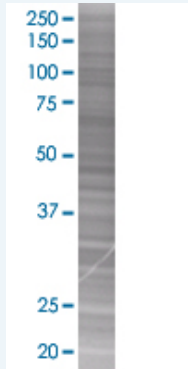
Plasmid: pCMV-EDN2 full-length

Host: Human

Theoretical MW (kDa): 20

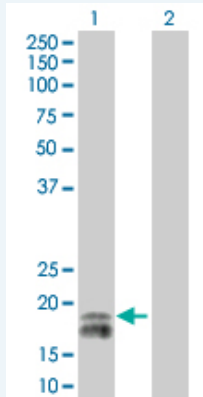
Quality Control Testing: Transient overexpression cell lysate was tested with Anti-EDN2 antibody (H00001907-B01) by Western Blots.

SDS-PAGE Gel



EDN2 transfected lysate

Western Blot



Lane 1: EDN2 transfected lysate (20 KDa).

Lane 2: Non-transfected lysate.

Storage Buffer: 1X Sample Buffer (50 mM Tris-HCl, 2% SDS, 10% glycerol, 300 mM 2-mercaptoethanol, 0.01% Bromophenol blue)

Storage Instruction: Store at -80°C. Aliquot to avoid repeated freezing and thawing.

MSDS:  [Download](#)

Applications

Application Image

Western Blot

Western Blot

Gene Information

Entrez GeneID: [1907](#)

GeneBank Accession#: [NM_001956](#)

Protein Accession#: [NP_001947](#)

Gene Name: EDN2

Gene Alias: ET2,PPET2

Gene Description: endothelin 2

Omim ID: [131241](#)

Gene Ontology: [Hyperlink](#)

Gene Summary: This gene encodes a member of the endothelin protein family of secretory vasoconstrictive peptides. The preproprotein is processed to a short mature form which functions as a ligand for the endothelin receptors that initiate intracellular signaling events. This gene product is involved in a wide range of biological processes, such as hypertension and ovulation. [provided by RefSeq]

Other Designations: OTTHUMP00000007075,preproendothelin 2

Gene Pathway

[Hypertrophic cardiomyopathy \(HCM\)](#) [Neuroactive ligand-receptor interaction](#)
[Vascular smooth muscle contraction](#)

Related Disease

[Atrial Fibrillation](#) [Cardiomyopathy](#), [Hypertrophic Cardiovascular Diseases](#)
[Connective Tissue Diseases](#) [Cystic Fibrosis](#) [Diabetes Mellitus, Type 2](#)
[Ductus Arteriosus, Patent](#) [Edema Fetal Diseases](#) [Genetic Predisposition to Disease](#)
[Infant, Premature, Diseases](#) [Infection](#) [Inflammation](#) [Musculoskeletal Diseases](#)
[Pregnancy Complications](#), [Hematologic](#) [Premature Birth](#) [Skin Diseases](#)