



# SZABO SCANDIC

Part of Europa Biosite

## Produktinformation



Forschungsprodukte & Biochemikalien



Zellkultur & Verbrauchsmaterial



Diagnostik & molekulare Diagnostik



Laborgeräte & Service

Weitere Information auf den folgenden Seiten!  
See the following pages for more information!



### Lieferung & Zahlungsart

siehe unsere [Liefer- und Versandbedingungen](#)

### Zuschläge

- Mindermengenzuschlag
- Trockeneiszuschlag
- Gefahrgutzuschlag
- Expressversand

### SZABO-SCANDIC HandelsgmbH

Quellenstraße 110, A-1100 Wien

T. +43(0)1 489 3961-0

F. +43(0)1 489 3961-7

[mail@szabo-scandic.com](mailto:mail@szabo-scandic.com)

[www.szabo-scandic.com](http://www.szabo-scandic.com)

[linkedin.com/company/szaboscandic](https://www.linkedin.com/company/szaboscandic) 

## EDNRA monoclonal antibody (M02), clone 2A5

Catalog # : H00001909-M02

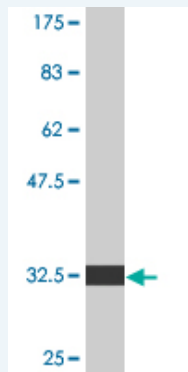
規格 : [ 100 ug ]

List All

### Specification

<b>Product Description:</b>	Mouse monoclonal antibody raised against a partial recombinant EDNRA.
<b>Immunogen:</b>	EDNRA (AAH22511, 18 a.a. ~ 80 a.a) partial recombinant protein with GST tag. MW of the GST tag alone is 26 KDa.
<b>Sequence:</b>	VISDNPERYSTNLSNHVDDFTTFRGTELSFLVTTHQPTNLVLPNSGSMHN YCPQQTKITSAFK
<b>Host:</b>	Mouse
<b>Reactivity:</b>	Human
<b>Isotype:</b>	IgG2a Kappa

**Quality Control Testing:** Antibody Reactive Against Recombinant Protein.



Western Blot detection against Immunogen (32.56 KDa) .

**Storage Buffer:** In 1x PBS, pH 7.4

**Storage Instruction:** Store at -20°C or lower. Aliquot to avoid repeated freezing and thawing.

**MSDS:** [Download](#)

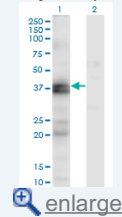
**Datasheet:** [Download](#)

### Applications

Western Blot (Transfected lysate)

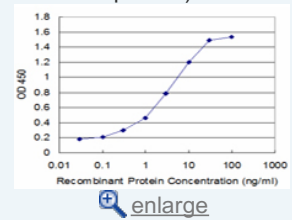
### Application Image

Western Blot (Transfected lysate)

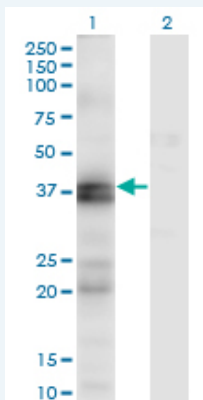


Western Blot (Recombinant protein)

Sandwich ELISA (Recombinant protein)



ELISA



Western Blot analysis of EDNRA expression in transfected 293T cell line by EDNRA monoclonal antibody (M02), clone 2A5.

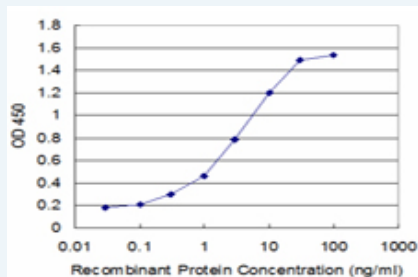
Lane 1: EDNRA transfected lysate(48.7 KDa).  
Lane 2: Non-transfected lysate.

[Protocol Download](#)

### Western Blot (Recombinant protein)

[Protocol Download](#)

### Sandwich ELISA (Recombinant protein)



Detection limit for recombinant GST tagged EDNRA is approximately 0.1ng/ml as a capture antibody.

[Protocol Download](#)

### ELISA

### Gene Information

Entrez GeneID: [1909](#)

GeneBank [BC022511](#)  
Accession#:

Protein [AAH22511](#)  
Accession#:

Gene Name: EDNRA

Gene Alias: ETA,ETRA

Gene Description: endothelin receptor type A

Omim ID: [131243](#), [157300](#)

Gene Ontology: [Hyperlink](#)

Other Designations: G protein-coupled receptor

### Gene Pathway

[Calcium signaling pathway](#) [Neuroactive ligand-receptor interaction](#)  
[Vascular smooth muscle contraction](#)

#### **Related Disease**

---

[Alzheimer Disease](#) [Alzheimer disease](#) [Asthma](#) [Asthma](#) [Atherosclerosis](#) [Atherosclerosis](#)  
[Brain Infarction](#) [Brain Ischemia](#) [Bronchial Hyperreactivity](#) [Cardiomyopathy, Dilated](#)  
[Cardiovascular Diseases](#) [Cerebral Infarction](#) [Constriction, Pathologic](#)  
[Coronary Artery Disease](#) [Cystic Fibrosis](#) [Diabetes Complications](#) [Diabetes Mellitus](#)  
[Diabetes Mellitus, Type 2](#) [Disease Progression](#)

**... see more**

---

[服務條款](#) | [隱私權政策](#) | [著作及商標](#) | [網站地圖](#)

©2016 亞諾法生技股份有限公司 Abnova Corporation. 版權所有.