



SZABO SCANDIC

Part of Europa Biosite

Produktinformation



Forschungsprodukte & Biochemikalien



Zellkultur & Verbrauchsmaterial



Diagnostik & molekulare Diagnostik



Laborgeräte & Service

Weitere Information auf den folgenden Seiten!
See the following pages for more information!



Lieferung & Zahlungsart

siehe unsere [Liefer- und Versandbedingungen](#)

Zuschläge

- Mindermengenzuschlag
- Trockeneiszuschlag
- Gefahrgutzuschlag
- Expressversand

SZABO-SCANDIC HandelsgmbH

Quellenstraße 110, A-1100 Wien

T. +43(0)1 489 3961-0

F. +43(0)1 489 3961-7

mail@szabo-scandic.com

www.szabo-scandic.com

[linkedin.com/company/szaboscandic](https://www.linkedin.com/company/szaboscandic) 

PHC1 purified MaxPab mouse polyclonal antibody (B01P) MaxPab®

Catalog # : H00001911-B01P

規格 : [50 ug]

[List All](#)

Specification

Product Description: Mouse polyclonal antibody raised against a full-length human PHC1 protein.

Immunogen: PHC1 (AAH73964, 1 a.a. ~ 957 a.a) full-length human protein.

Sequence:
 METESEQNSNSTNGSSSSGGSSRPQIAQMSLYERQAVQATIAASRQASS
 PNTSTTQQQT TTTTQASINLATTSAACLISRSQSVSSPSATTLTQSVLLGN
 TTSPPLNQSQAQMYLRVNRRLGRNVPLASQLILMPNGAVAAVQQEVPSA
 QSPGVHADADQVQNLAVRNQQASAGPQMQGSTQKAIPPGASPVSSL
 SQASSQALAVAQASSGATNQLNLSQAGGGSGNSIPGSMGPGGGGQA
 HGGLGQLPSSGMGGGSCPRKGTGVVQPLPAAQTVTVSQGSQTEAESA
 AAKKAEADGSGQQNVGMNLRTRATPAPSQTLISSATYTIQPHSLIQQQ
 QQIHLQQKQVVIQQQIAHHQQQFQHRQSLLHTATHLQLAQQQQQQQ
 QQQQQPQATTLTAPQPPQVPPTQQVPPSQSQQAQTLVVQPMLQS
 SPLSLPPDAAPKPIPIQSKPPVAPIKPPQLGAAKMSAAQPPPHIPVQVV
 GTRQPGTAQAQALGLAQLAAAVPTSRGMPGTVQSGQAHLASSPPSSQ
 APGALQECPPTLAPGMLAPVQGTAVVKGATSSPVVAQVPAAFYM
 QSVHLPGKQTLAVKRKADSEERDDVSTLGSMLPAKASPVAESPKVM
 DEKSSLGEKAESVAN/NANTPSELVALTPAPSVPPPTLAMVSRQMGDS
 KPPQAIKPKQILTHIEGFVIQEGAEPFPVGCQLLKESEKPLQTLPTGLT
 ENQSGSLGVDSPSAELDKKANLLKCEYCGKYAPAEQFRGSKRFCST
 CAKRYNVSCSHQFRLKRKKMKEFQEANYARVRRRGRPRSSSDIARAKIQ
 GKCHRQEDSSRGSDNSSYDEALSPTSPGPLSVRAGHGERDLGNPNTA
 PPTPELHGINPVFLSSNPSRWSVEEVYEFIASLQGCQEIAEEFRSQEIDGQ
 ALLLLKEEHLMSAMNIKLGPAKICAKINVLKET

Host: Mouse

Reactivity: Human

Quality Control Testing: Antibody reactive against mammalian transfected lysate.

Storage Buffer: In 1x PBS, pH 7.4

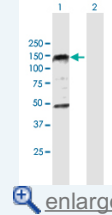
Storage Instruction: Store at -20°C or lower. Aliquot to avoid repeated freezing and thawing.

MSDS: [Download](#)

Datasheet: [Download](#)

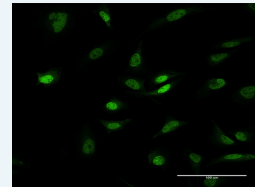
Application Image

Western Blot (Transfected lysate)



[enlarge](#)

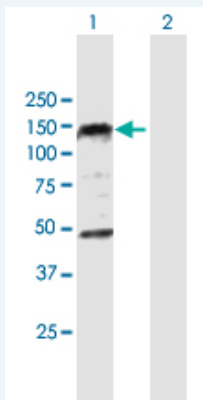
Immunofluorescence



[enlarge](#)

Applications

Western Blot (Transfected lysate)

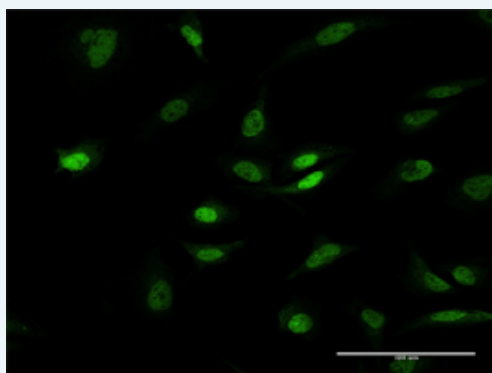


Western Blot analysis of PHC1 expression in transfected 293T cell line ([H00001911-T01](#)) by PHC1 MaxPab polyclonal antibody.

Lane 1: PHC1 transfected lysate(105.27 KDa).
Lane 2: Non-transfected lysate.

[Protocol Download](#)

Immunofluorescence



enlarge this image

Immunofluorescence of [purified](#) MaxPab antibody to PHC1 on HeLa cell. [antibody concentration 10 ug/ml]

[Protocol Download](#)

Gene Information

Entrez GeneID: [1911](#)

GeneBank [BC073964](#)
Accession#:

Protein [AAH73964](#)
Accession#:

Gene Name: PHC1

Gene Alias: EDR1,HPH1,RAE28

Gene Description: polyhomeotic homolog 1 (Drosophila)

Omim ID: [602978](#)

Gene Ontology: [Hyperlink](#)

Gene Summary: This gene is a homolog of the Drosophila polyhomeotic gene, which is a member of the Polycomb group of genes. The gene product is a component of a multimeric protein complex that contains EDR2 and the vertebrate Polycomb protein BMH1. The gene product, the EDR2 protein, and the Drosophila polyhomeotic protein share 2 highly conserved domains, named homology domains I and II. These domains are involved in protein-protein interactions and may mediate heterodimerization of the protein encoded by this gene and the EDR2

protein. [provided by RefSeq]

Other Rae28-like,early development regulator 1 (homolog of polyhomeotic
Designations: 1),polyhomeotic 1-like,polyhomeotic-like 1

[服務條款](#) | [隱私權政策](#) | [著作及商標](#) | [網站地圖](#)

©2016 亞諾法生技股份有限公司 Abnova Corporation. 版權所有.