



# SZABO SCANDIC

Part of Europa Biosite

## Produktinformation



Forschungsprodukte & Biochemikalien



Zellkultur & Verbrauchsmaterial



Diagnostik & molekulare Diagnostik



Laborgeräte & Service

Weitere Information auf den folgenden Seiten!  
See the following pages for more information!



### Lieferung & Zahlungsart

siehe unsere [Liefer- und Versandbedingungen](#)

### Zuschläge

- Mindermengenzuschlag
- Trockeneiszuschlag
- Gefahrgutzuschlag
- Expressversand

### SZABO-SCANDIC HandelsgmbH

Quellenstraße 110, A-1100 Wien

T. +43(0)1 489 3961-0

F. +43(0)1 489 3961-7

[mail@szabo-scandic.com](mailto:mail@szabo-scandic.com)

[www.szabo-scandic.com](http://www.szabo-scandic.com)

[linkedin.com/company/szaboscandic](https://www.linkedin.com/company/szaboscandic) 

## PHC1 293T Cell Transient Overexpression Lysate(Denatured)

Catalog # : H00001911-T01

規格 : [ 100 uL ]

List All

### Specification

**Transfected Cell Line:** 293T

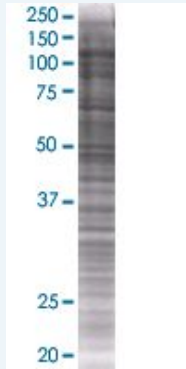
**Plasmid:** pCMV-PHC1 full-length

**Host:** Human

**Theoretical MW (kDa):** 100.2

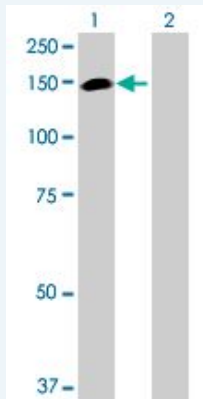
**Quality Control Testing:** Transient overexpression cell lysate was tested with Anti-PHC1 antibody (H00001911-B01) by Western Blots.

#### SDS-PAGE Gel



PHC1 transfected lysate.

#### Western Blot



Lane 1: PHC1 transfected lysate ( 100.2 KDa)

Lane 2: Non-transfected lysate.

**Storage Buffer:** 1X Sample Buffer (50 mM Tris-HCl, 2% SDS, 10% glycerol, 300 mM 2-mercaptoethanol, 0.01% Bromophenol blue)

**Storage Instruction:** Store at -80°C. Aliquot to avoid repeated freezing and thawing.

**MSDS:**  [Download](#)

### Applications

## Western Blot

### Gene Information

Entrez GeneID: [1911](#)

GeneBank Accession#: [BC073964](#)

Protein Accession#: [AAH73964](#)

Gene Name: PHC1

Gene Alias: EDR1,HPH1,RAE28

Gene Description: polyhomeotic homolog 1 (Drosophila)

Omim ID: [602978](#)

Gene Ontology: [Hyperlink](#)

**Gene Summary:** This gene is a homolog of the Drosophila polyhomeotic gene, which is a member of the Polycomb group of genes. The gene product is a component of a multimeric protein complex that contains EDR2 and the vertebrate Polycomb protein BMH1. The gene product, the EDR2 protein, and the Drosophila polyhomeotic protein share 2 highly conserved domains, named homology domains I and II. These domains are involved in protein-protein interactions and may mediate heterodimerization of the protein encoded by this gene and the EDR2 protein. [provided by RefSeq]

**Other Designations:** Rae28-like,early development regulator 1 (homolog of polyhomeotic 1),polyhomeotic 1-like,polyhomeotic-like 1