



SZABO SCANDIC

Part of Europa Biosite

Produktinformation



Forschungsprodukte & Biochemikalien



Zellkultur & Verbrauchsmaterial



Diagnostik & molekulare Diagnostik



Laborgeräte & Service

Weitere Information auf den folgenden Seiten!
See the following pages for more information!



Lieferung & Zahlungsart

siehe unsere [Liefer- und Versandbedingungen](#)

Zuschläge

- Mindermengenzuschlag
- Trockeneiszuschlag
- Gefahrgutzuschlag
- Expressversand

SZABO-SCANDIC HandelsgmbH

Quellenstraße 110, A-1100 Wien

T. +43(0)1 489 3961-0

F. +43(0)1 489 3961-7

mail@szabo-scandic.com

www.szabo-scandic.com

[linkedin.com/company/szaboscandic](https://www.linkedin.com/company/szaboscandic) 

PHC1 293T Cell Transient Overexpression Lysate(Denatured)

Catalog # : H00001911-T03

規格 : [100 uL]

List All

Specification

Transfected Cell Line: 293T

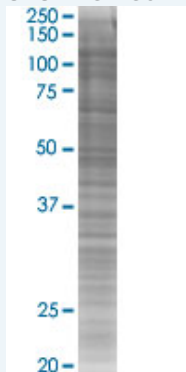
Plasmid: pCMV-PHC1 full-length

Host: Human

Theoretical MW (kDa): 100.2

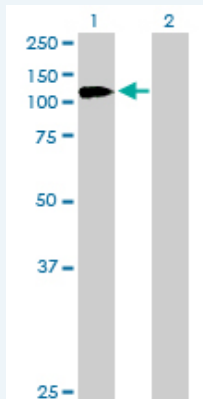
Quality Control Testing: Transient overexpression cell lysate was tested with Anti-PHC1 antibody (H00001911-D01P) by Western Blots.

SDS-PAGE Gel



PHC1 transfected lysate.

Western Blot



Lane 1: PHC1 transfected lysate (100.20 KDa)

Lane 2: Non-transfected lysate.

Storage Buffer: 1X Sample Buffer (50 mM Tris-HCl, 2% SDS, 10% glycerol, 300 mM 2-mercaptoethanol, 0.01% Bromophenol blue)

Storage Instruction: Store at -80°C. Aliquot to avoid repeated freezing and thawing.

MSDS:  [Download](#)

Applications

Application Image

Western Blot

Western Blot

Gene Information

Entrez GeneID: [1911](#)

GeneBank Accession#: [BC073964](#)

Protein Accession#: [AAH73964.1](#)

Gene Name: PHC1

Gene Alias: EDR1,HPH1,RAE28

Gene Description: polyhomeotic homolog 1 (Drosophila)

Omim ID: [602978](#)

Gene Ontology: [Hyperlink](#)

Gene Summary: This gene is a homolog of the Drosophila polyhomeotic gene, which is a member of the Polycomb group of genes. The gene product is a component of a multimeric protein complex that contains EDR2 and the vertebrate Polycomb protein BMH1. The gene product, the EDR2 protein, and the Drosophila polyhomeotic protein share 2 highly conserved domains, named homology domains I and II. These domains are involved in protein-protein interactions and may mediate heterodimerization of the protein encoded by this gene and the EDR2 protein. [provided by RefSeq]

Other Designations: Rae28-like,early development regulator 1 (homolog of polyhomeotic 1),polyhomeotic 1-like,polyhomeotic-like 1