



# SZABO SCANDIC

Part of Europa Biosite

## Produktinformation



Forschungsprodukte & Biochemikalien



Zellkultur & Verbrauchsmaterial



Diagnostik & molekulare Diagnostik



Laborgeräte & Service

Weitere Information auf den folgenden Seiten!  
See the following pages for more information!



### Lieferung & Zahlungsart

siehe unsere [Liefer- und Versandbedingungen](#)

### Zuschläge

- Mindermengenzuschlag
- Trockeneiszuschlag
- Gefahrgutzuschlag
- Expressversand

### SZABO-SCANDIC HandelsgmbH

Quellenstraße 110, A-1100 Wien

T. +43(0)1 489 3961-0

F. +43(0)1 489 3961-7

[mail@szabo-scandic.com](mailto:mail@szabo-scandic.com)

[www.szabo-scandic.com](http://www.szabo-scandic.com)

[linkedin.com/company/szaboscandic](https://www.linkedin.com/company/szaboscandic) 

## PHC2 monoclonal antibody (M01), clone 1F4

Catalog # : H00001912-M01

規格 : [ 100 ug ]

[List All](#)

### Specification

**Product Description:** Mouse monoclonal antibody raised against a partial recombinant PHC2.

**Immunogen:** PHC2 (NP\_004418.2, 91 a.a. ~ 200 a.a) partial recombinant protein with GST tag. MW of the GST tag alone is 26 KDa.

**Sequence:** PYLQESKEEGAPLKLKCELCGRVDFAYKFKRSKRFCSMACAKRYNVGC  
TKRVGLFHSDRSKLQKAGAATHNRRRASKASLPPLTKDTKKQPTGTVPL  
SVTAALQLTHSQE

**Host:** Mouse

**Reactivity:** Human

**Isotype:** IgG2a Kappa

**Quality Control Testing:** Antibody Reactive Against Recombinant Protein.

**Storage Buffer:** In 1x PBS, pH 7.4

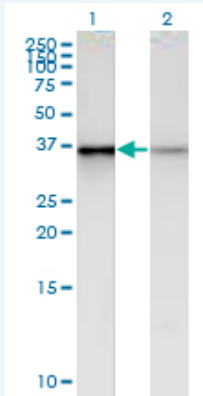
**Storage Instruction:** Store at -20°C or lower. Aliquot to avoid repeated freezing and thawing.

**MSDS:**  [Download](#)

**Datasheet:**  [Download](#)

### Applications

#### Western Blot (Transfected lysate)



Western Blot analysis of PHC2 expression in transfected 293T cell line by PHC2 monoclonal antibody (M01), clone 1F4.

Lane 1: PHC2 transfected lysate (Predicted MW: 35.8 KDa).

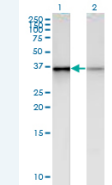
Lane 2: Non-transfected lysate.

 [Protocol Download](#)

ELISA

### Application Image

Western Blot (Transfected lysate)



 [enlarge](#)

ELISA

## Gene Information

---

**Entrez GeneID:** [1912](#)

---

**GeneBank  
Accession#:** [NM\\_004427](#)

---

**Protein  
Accession#:** [NP\\_004418.2](#)

---

**Gene Name:** PHC2

---

**Gene Alias:** EDR2,HPH2,MGC163502,PH2

---

**Gene  
Description:** polyhomeotic homolog 2 (Drosophila)

---

**Omim ID:** [602979](#)

---

**Gene Ontology:** [Hyperlink](#)

---

**Gene Summary:** In *Drosophila melanogaster*, the 'Polycomb' group (PcG) of genes are part of a cellular memory system that is responsible for the stable inheritance of gene activity. PcG proteins form a large multimeric, chromatin-associated protein complex. The protein encoded by this gene has homology to the *Drosophila* PcG protein 'polyhomeotic' (Ph) and is known to heterodimerize with EDR1 and colocalize with BMI1 in interphase nuclei of human cells. The specific function in human cells has not yet been determined. Two transcript variants encoding different isoforms have been found for this gene. [provided by RefSeq]

---

**Other  
Designations:** OTTHUMP00000004292,OTTHUMP00000004294,early development regulator 2 (homolog of polyhomeotic 2),early development regulator 2-like,polyhomeotic 2,polyhomeotic-like 2

---

## Related Disease

---

[Tobacco Use Disorder](#)

---

[服務條款](#) | [隱私權政策](#) | [著作及商標](#) | [網站地圖](#)

©2016 亞諾法生技股份有限公司 Abnova Corporation. 版權所有.