



SZABO SCANDIC

Part of Europa Biosite

Produktinformation



Forschungsprodukte & Biochemikalien



Zellkultur & Verbrauchsmaterial



Diagnostik & molekulare Diagnostik



Laborgeräte & Service

Weitere Information auf den folgenden Seiten!
See the following pages for more information!



Lieferung & Zahlungsart

siehe unsere [Liefer- und Versandbedingungen](#)

Zuschläge

- Mindermengenzuschlag
- Trockeneiszuschlag
- Gefahrgutzuschlag
- Expressversand

SZABO-SCANDIC HandelsgmbH

Quellenstraße 110, A-1100 Wien

T. +43(0)1 489 3961-0

F. +43(0)1 489 3961-7

mail@szabo-scandic.com

www.szabo-scandic.com

[linkedin.com/company/szaboscandic](https://www.linkedin.com/company/szaboscandic) 

PHC2 293T Cell Transient Overexpression Lysate(Denatured)

Catalog # : H00001912-T01

規格 : [100 uL]

[List All](#)

Specification

Transfected Cell Line: 293T

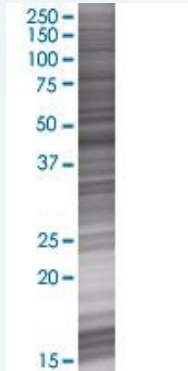
Plasmid: pCMV-PHC2 full-length

Host: Human

Theoretical MW (kDa): 35.8

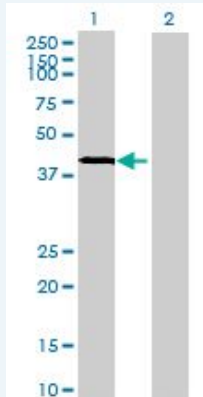
Quality Control Testing: Transient overexpression cell lysate was tested with Anti-PHC2 antibody (H00001912-B01) by Western Blots.

SDS-PAGE Gel



PHC2 transfected lysate.

Western Blot



Lane 1: PHC2 transfected lysate (35.8 KDa)

Lane 2: Non-transfected lysate.

Storage Buffer: 1X Sample Buffer (50 mM Tris-HCl, 2% SDS, 10% glycerol, 300 mM 2-mercaptoethanol, 0.01% Bromophenol blue)

Storage Instruction: Store at -80°C. Aliquot to avoid repeated freezing and thawing.

MSDS:  [Download](#)

Applications

Western Blot

Gene Information

Entrez GeneID: [1912](#)

GeneBank Accession#: [NM_004427](#)

Protein Accession#: [NP_004418](#)

Gene Name: PHC2

Gene Alias: EDR2,HPH2,MGC163502,PH2

Gene Description: polyhomeotic homolog 2 (Drosophila)

Omim ID: [602979](#)

Gene Ontology: [Hyperlink](#)

Gene Summary: In *Drosophila melanogaster*, the 'Polycomb' group (PcG) of genes are part of a cellular memory system that is responsible for the stable inheritance of gene activity. PcG proteins form a large multimeric, chromatin-associated protein complex. The protein encoded by this gene has homology to the *Drosophila* PcG protein 'polyhomeotic' (Ph) and is known to heterodimerize with EDR1 and colocalize with BMI1 in interphase nuclei of human cells. The specific function in human cells has not yet been determined. Two transcript variants encoding different isoforms have been found for this gene. [provided by RefSeq]

Other Designations: OTTHUMP00000004292,OTTHUMP00000004294,early development regulator 2 (homolog of polyhomeotic 2),early development regulator 2-like,polyhomeotic 2,polyhomeotic-like 2

Related Disease

[Tobacco Use Disorder](#)