



SZABO SCANDIC

Part of Europa Biosite

Produktinformation



Forschungsprodukte & Biochemikalien



Zellkultur & Verbrauchsmaterial



Diagnostik & molekulare Diagnostik



Laborgeräte & Service

Weitere Information auf den folgenden Seiten!
See the following pages for more information!



Lieferung & Zahlungsart

siehe unsere [Liefer- und Versandbedingungen](#)

Zuschläge

- Mindermengenzuschlag
- Trockeneiszuschlag
- Gefahrgutzuschlag
- Expressversand

SZABO-SCANDIC HandelsgmbH

Quellenstraße 110, A-1100 Wien

T. +43(0)1 489 3961-0

F. +43(0)1 489 3961-7

mail@szabo-scandic.com

www.szabo-scandic.com

[linkedin.com/company/szaboscandic](https://www.linkedin.com/company/szaboscandic) 

EEF1A1 polyclonal antibody (A01)

Catalog # : H00001915-A01

規格 : [50 uL]

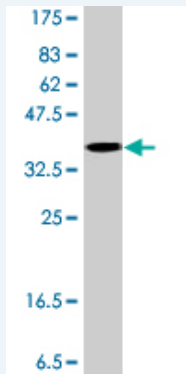
[List All](#)

Specification

Product Description:	Mouse polyclonal antibody raised against a partial recombinant EEF1A1.
Immunogen:	EEF1A1 (AAH09875, 156 a.a. ~ 255 a.a) partial recombinant protein with GST tag.
Sequence:	DSTEPPYSQKRYEEIVKEVSTYIKKIGYNPDTVAFVPISGWNGDNMLEPSA NMPWFKGWKVKTRKDGNASGTTLLEALDCILPPTTRPTDKPLRLPLQDVYK
Host:	Mouse
Reactivity:	Human

Quality Control Antibody Reactive Against Recombinant Protein.

Testing:



Storage Buffer: 50 % glycerol

Storage Instruction: Store at -20°C or lower. Aliquot to avoid repeated freezing and thawing.

MSDS: [Download](#)

Datasheet: [Download](#)

Publication Reference

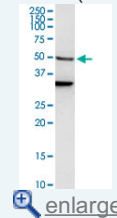
1. [EEF1A1-Actin interactions alter mRNA stability to determine differential osteopontin expression in HepG2 and Hep3B cells.](#)
Zhang J, Guo H, Mi Z, Gao C, Bhattacharya S, Li J, Kuo PC. Exp Cell Res. 2009 Jan 15;315(2):304-12. Epub 2008 Nov 7.

Applications

Western Blot (Cell lysate)

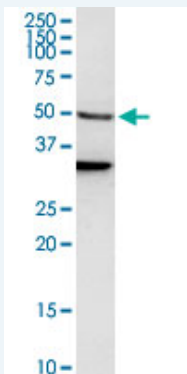
Application Image

Western Blot (Cell lysate)




Western Blot (Recombinant protein)

ELISA



EEF1A1 polyclonal antibody (A01). Western Blot analysis of EEF1A1 expression in K-562.

 [Protocol Download](#)

Western Blot (Recombinant protein)

 [Protocol Download](#)

ELISA

Gene Information

Entrez GeneID: [1915](#)

GeneBank [BC009875](#)

Accession#:

Protein [AAH09875](#)

Accession#:

Gene Name: EEF1A1

Gene Alias: CCS-3,CCS3,EEF-1,EEF1A,EF-Tu,EF1A,FLJ25721,GRAF-1EF,HNGC:16303,LENG7,MGC102687,MGC131894,MGC16224,PTI1,eEF1A-1

Gene Description: eukaryotic translation elongation factor 1 alpha 1

Omim ID: [130590](#)

Gene Ontology: [Hyperlink](#)

Gene Summary: This gene encodes an isoform of the alpha subunit of the elongation factor-1 complex, which is responsible for the enzymatic delivery of aminoacyl tRNAs to the ribosome. This isoform (alpha 1) is expressed in brain, placenta, lung, liver, kidney, and pancreas, and the other isoform (alpha 2) is expressed in brain, heart and skeletal muscle. This isoform is identified as an autoantigen in 66% of patients with Felty syndrome. This gene has been found to have multiple copies on many chromosomes, some of which, if not all, represent different pseudogenes. [provided by RefSeq]

Other Designations: CTCL tumor antigen,EF1a-like protein,OTTHUMP00000016736,OTTHUMP00000063804,OTTHUMP0000063805,cervical cancer suppressor 3,elongation factor 1 alpha subunit,elongation factor 1-alpha,elongation factor Tu,eukaryotic translation elongation factor 1 alpha 1-