



SZABO SCANDIC

Part of Europa Biosite

Produktinformation



Forschungsprodukte & Biochemikalien



Zellkultur & Verbrauchsmaterial



Diagnostik & molekulare Diagnostik



Laborgeräte & Service

Weitere Information auf den folgenden Seiten!
See the following pages for more information!



Lieferung & Zahlungsart

siehe unsere [Liefer- und Versandbedingungen](#)

Zuschläge

- Mindermengenzuschlag
- Trockeneiszuschlag
- Gefahrgutzuschlag
- Expressversand

SZABO-SCANDIC HandelsgmbH

Quellenstraße 110, A-1100 Wien

T. +43(0)1 489 3961-0

F. +43(0)1 489 3961-7

mail@szabo-scandic.com

www.szabo-scandic.com

[linkedin.com/company/szaboscandic](https://www.linkedin.com/company/szaboscandic) 

EEF1A2 polyclonal antibody (A01)

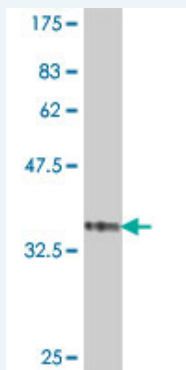
Catalog # : H00001917-A01

規格 : [50 uL]

[List All](#)

Specification

Product Description:	Mouse polyclonal antibody raised against a partial recombinant EEF1A2.
Immunogen:	EEF1A2 (NP_001949, 364 a.a. ~ 462 a.a) partial recombinant protein with GST tag.
Sequence:	HTAHIACKFAELKEKIDRRSGKKLEDNPKSLKSGDAAIVEMVPGKPMCVE SFSQYPPLGRFAVRDMRQTVAVGVIKNVEKSSGGAGKVTKSAQKAQKA G
Host:	Mouse
Reactivity:	Human, Mouse, Rat
Quality Control Testing:	Antibody Reactive Against Recombinant Protein.



Western Blot detection against Immunogen (37 KDa) .

Storage Buffer: 50 % glycerol

Storage Instruction: Store at -20°C or lower. Aliquot to avoid repeated freezing and thawing.

MSDS: [Download](#)

Datasheet: [Download](#)

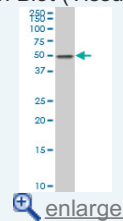
Publication Reference

- [Degradation of newly synthesized polypeptides by ribosome-associated RACK1/JNK/eEF1A2 complex.](#)
Gandin V, Gutierrez GJ, Brill LM, Varsano T, Feng Y, Aza-Blanc P, Au Q, McLaughlan S, Ferreira TA, Alain T, Sonenberg N, Topisirovic I, Ronai ZAMol Cell Biol. 2013 Apr 22.
- [Dissecting the expression of EEF1A1/2 genes in human prostate cancer cells: the potential of EEF1A2 as a hallmark for prostate transformation and progression.](#)
Scaggiante B, Dapas B, Bonin S, Grassi M, Zennaro C, Farra R, Cristiano L, Siracusano S, Zanconati F, Giansante C, Grassi G.Br J Cancer. 2011 Nov 17. doi: 10.1038/bjc.2011.500.

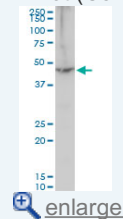
Applications

Application Image

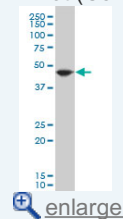
Western Blot (Tissue lysate)



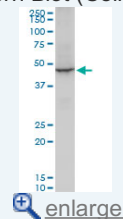
Western Blot (Cell lysate)



Western Blot (Cell lysate)



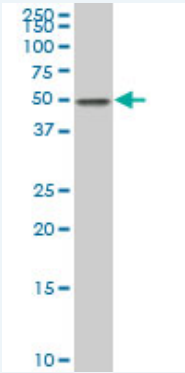
Western Blot (Cell lysate)




Western Blot (Recombinant protein)

ELISA

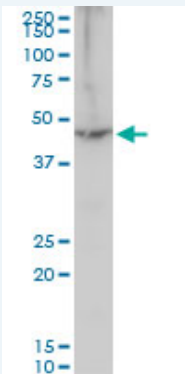
Western Blot (Tissue lysate)



EEF1A2 polyclonal antibody (A01), Lot # 070201JCSb. Western Blot analysis of EEF1A2 expression in human thyroid(diffuse hyperplasia).

 [Protocol Download](#)

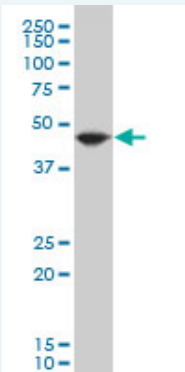
Western Blot (Cell lysate)



EEF1A2 polyclonal antibody (A01), Lot # 070201JCSb. Western Blot analysis of EEF1A2 expression in PC-12.

 [Protocol Download](#)

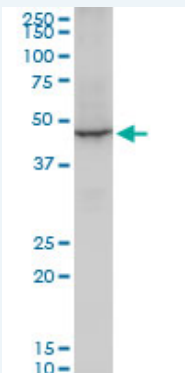
Western Blot (Cell lysate)



EEF1A2 polyclonal antibody (A01), Lot # 070201JCSb Western Blot analysis of EEF1A2 expression in Hela S3 NE (Cat # L013V3).

 [Protocol Download](#)

Western Blot (Cell lysate)



EEF1A2 polyclonal antibody (A01), Lot # 070201JCSb. Western Blot analysis of EEF1A2

expression in NIH/3T3.

 [Protocol Download](#)

Western Blot (Recombinant protein)

 [Protocol Download](#)

ELISA

Gene Information

Entrez GeneID: [1917](#)

**GeneBank
Accession#:** [NM_001958](#)

**Protein
Accession#:** [NP_001949](#)

Gene Name: [EEF1A2](#)

Gene Alias: [EEF1AL,EF-1-alpha-2,EF1A,FLJ41696,HS1,STN,STNL](#)

**Gene
Description:** [eukaryotic translation elongation factor 1 alpha 2](#)

Omim ID: [602959](#)

Gene Ontology: [Hyperlink](#)

Gene Summary: This gene encodes an isoform of the alpha subunit of the elongation factor-1 complex, which is responsible for the enzymatic delivery of aminoacyl tRNAs to the ribosome. This isoform (alpha 2) is expressed in brain, heart and skeletal muscle, and the other isoform (alpha 1) is expressed in brain, placenta, lung, liver, kidney, and pancreas. This gene may be critical in the development of ovarian cancer. Alternatively spliced transcript variants encoding different isoforms have been found for this gene. [provided by RefSeq]

**Other
Designations:** [OTTHUMP00000031776,elongation factor 1-alpha 2,elongation factor-1 alpha,statin S1,statin-like](#)