



SZABO SCANDIC

Part of Europa Biosite

Produktinformation



Forschungsprodukte & Biochemikalien



Zellkultur & Verbrauchsmaterial



Diagnostik & molekulare Diagnostik



Laborgeräte & Service

Weitere Information auf den folgenden Seiten!
See the following pages for more information!



Lieferung & Zahlungsart

siehe unsere [Liefer- und Versandbedingungen](#)

Zuschläge

- Mindermengenzuschlag
- Trockeneiszuschlag
- Gefahrgutzuschlag
- Expressversand

SZABO-SCANDIC HandelsgmbH

Quellenstraße 110, A-1100 Wien

T. +43(0)1 489 3961-0

F. +43(0)1 489 3961-7

mail@szabo-scandic.com

www.szabo-scandic.com

[linkedin.com/company/szaboscandic](https://www.linkedin.com/company/szaboscandic) 

EEF1B2 monoclonal antibody (M10), clone 3A5

Catalog # : H00001933-M10

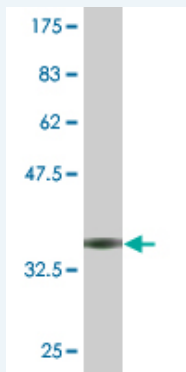
規格 : [100 ug]

[List All](#)

Specification

Product Description:	Mouse monoclonal antibody raised against a partial recombinant EEF1B2.
Immunogen:	EEF1B2 (NP_001950.1, 29 a.a. ~ 91 a.a) partial recombinant protein with GST tag. MW of the GST tag alone is 26 KDa.
Sequence:	VPSQADVAVFEAVSSPPPADLCHALRWYHNIKSYEKEKASLPGVKKALG KYGPADVEDTTGSG
Host:	Mouse
Reactivity:	Human
Isotype:	IgG2a Kappa

Quality Control Testing: Antibody Reactive Against Recombinant Protein.



Western Blot detection against Immunogen (32.56 KDa) .

Storage Buffer: In 1x PBS, pH 7.4

Storage Instruction: Store at -20°C or lower. Aliquot to avoid repeated freezing and thawing.

MSDS: [Download](#)

Datasheet: [Download](#)

Publication Reference

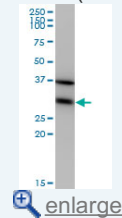
1. [Independent overexpression of the subunits of translation elongation factor complex eEF1H in human lung cancer.](#)
Veremieva M, Kapustian L, Khoruzhenko A, Zakharychev V, Negrutskii BBMC Cancer. 2014 Dec 3;14(1):913.

Applications

Western Blot (Cell lysate)

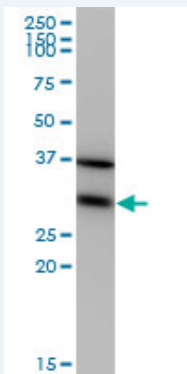
Application Image

Western Blot (Cell lysate)



Western Blot (Recombinant protein)

ELISA



EEF1B2 monoclonal antibody (M10), clone 3A5. Western Blot analysis of EEF1B2 expression in HeLa (Cat # L013V1).

 [Protocol Download](#)

Western Blot (Recombinant protein)

 [Protocol Download](#)

ELISA

Gene Information

Entrez GeneID: [1933](#)

GeneBank [NM_001959.3](#)

Accession#:

Protein [NP_001950.1](#)

Accession#:

Gene Name: EEF1B2

Gene Alias: EEF1B,EEF1B1,EF1B

Gene eukaryotic translation elongation factor 1 beta 2

Description:

Omim ID: [600655](#)

Gene Ontology: [Hyperlink](#)

Gene Summary: This gene encodes a translation elongation factor. The protein is a guanine nucleotide exchange factor involved in the transfer of aminoacylated tRNAs to the ribosome. Alternative splicing results in three transcript variants which differ only in the 5' UTR. [provided by RefSeq]

Other OTTHUMP00000163805,eukaryotic translation elongation factor 1 beta

Designations: 1