



SZABO SCANDIC

Part of Europa Biosite

Produktinformation



Forschungsprodukte & Biochemikalien



Zellkultur & Verbrauchsmaterial



Diagnostik & molekulare Diagnostik



Laborgeräte & Service

Weitere Information auf den folgenden Seiten!
See the following pages for more information!



Lieferung & Zahlungsart

siehe unsere [Liefer- und Versandbedingungen](#)

Zuschläge

- Mindermengenzuschlag
- Trockeneiszuschlag
- Gefahrgutzuschlag
- Expressversand

SZABO-SCANDIC HandelsgmbH

Quellenstraße 110, A-1100 Wien

T. +43(0)1 489 3961-0

F. +43(0)1 489 3961-7

mail@szabo-scandic.com

www.szabo-scandic.com

[linkedin.com/company/szaboscandic](https://www.linkedin.com/company/szaboscandic) 



EEF1D purified MaxPab mouse polyclonal antibody (B01P) MaxPab®

Catalog # : H00001936-B01P

規格 : [50 ug]

List All

Specification

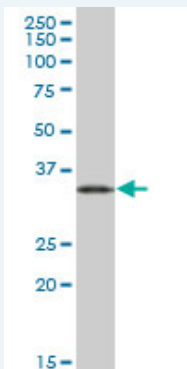
Product Description:	Mouse polyclonal antibody raised against a full-length human EEF1D protein.
Immunogen:	EEF1D (NP_001951.2, 1 a.a. ~ 281 a.a) full-length human protein.
Sequence:	MATNFLAHEKIWFDFKFKYDDAERRFYEQMNGPVAGASRQENGASVILRD IARARENIQKSLAGSSGPGASSGTSGDHGELVRIASLEVENQSLRGVWQ ELQQAISKLEARLNVLEKSSPGHRATAPQTQHVSPMRQVEPPAKKPATP AEDDEDDIDLFGSDNEEDKEAAQLREERLRQYAEKKAKKALVAKSSI LLDVKPWDETDMAQLEACVRSIQLDGLVWGASKLVPVGYGIRKLQIQC VVEDDKVGTDLLEEEITKFEHVQSVDAIAFNKI
Host:	Mouse
Reactivity:	Human
Quality Control Testing:	Antibody reactive against mammalian transfected lysate.
Storage Buffer:	In 1x PBS, pH 7.4
Storage Instruction:	Store at -20°C or lower. Aliquot to avoid repeated freezing and thawing.
MSDS:	 Download
Datasheet:	 Download

Publication Reference

1. Unbalanced expression of the translation complex eEF1 subunits in human cardioesophageal carcinoma.
Veremieva M, Khoruzhenko A, Zaicev S, Negrutskii B, El'skaya A. Eur J Clin Invest. 2011 Mar;41(3):269-76. doi: 10.1111/j.1365-2362.2010.02404.x. Epub 2010 Oct 21.

Applications

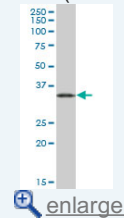
Western Blot (Tissue lysate)



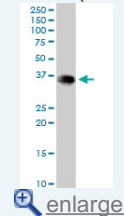
EEF1D MaxPab polyclonal antibody. Western Blot analysis of EEF1D expression in human pancreas.

Application Image

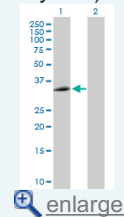
Western Blot (Tissue lysate)



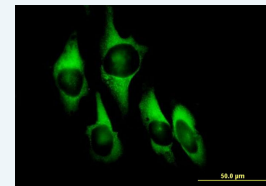
Western Blot (Cell lysate)



Western Blot (Transfected lysate)

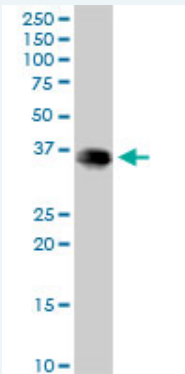


Immunofluorescence



 [enlarge](#)

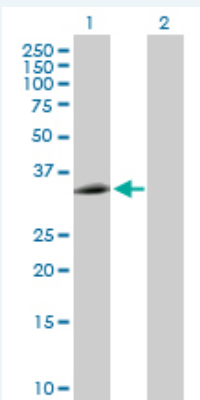
Western Blot (Cell lysate)



EEF1D MaxPab polyclonal antibody. Western Blot analysis of EEF1D expression in HeLa.

 Protocol Download

Western Blot (Transfected lysate)



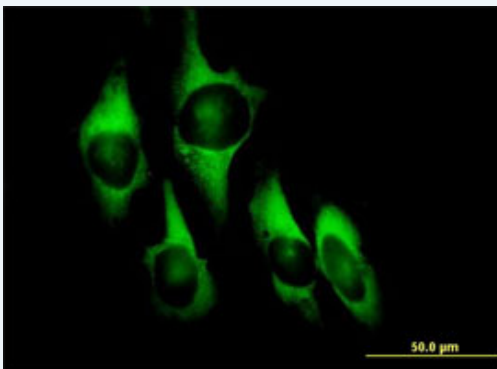
Western Blot analysis of EEF1D expression in transfected 293T cell line ([H00001936-T01](#)) by EEF1D MaxPab polyclonal antibody.

Lane 1: EEF1D transfected lysate(30.91 KDa).

Lane 2: Non-transfected lysate.

 Protocol Download

Immunofluorescence



 enlarge this image

Immunofluorescence of purified MaxPab antibody to EEF1D on HeLa cell. [antibody concentration 10 ug/ml]

 Protocol Download

Gene Information

Entrez GeneID: [1936](#)

GeneBank [NM_001960](#)
Accession#:

Protein [NP_001951.2](#)
Accession#:

Gene Name: EEF1D

Gene Alias: EF-1D,EF1D,FLJ20897,FP1047

Gene Description: eukaryotic translation elongation factor 1 delta (guanine nucleotide exchange protein)

Omim ID: [130592](#)

Gene Ontology: [Hyperlink](#)

Gene Summary: This gene encodes a subunit of the elongation factor-1 complex, which is responsible for the enzymatic delivery of aminoacyl tRNAs to the ribosome. This subunit functions as guanine nucleotide exchange factor. It is reported that this subunit interacts with HIV-1 Tat, and thus it represses the translation of host-cell, but not HIV-1, mRNAs. Several alternatively spliced transcript variants encoding multiple isoforms have been found for this gene. [provided by RefSeq]

Other Designations: antigen NY-CO-4,eukaryotic translation elongation factor 1 delta,guanine nucleotide exchange protein

[服務條款](#) | [隱私權政策](#) | [著作及商標](#) | [網站地圖](#)

©2016 亞諾法生技股份有限公司 Abnova Corporation. 版權所有.