



# SZABO SCANDIC

Part of Europa Biosite

## Produktinformation



Forschungsprodukte & Biochemikalien



Zellkultur & Verbrauchsmaterial



Diagnostik & molekulare Diagnostik



Laborgeräte & Service

Weitere Information auf den folgenden Seiten!  
See the following pages for more information!



### Lieferung & Zahlungsart

siehe unsere [Liefer- und Versandbedingungen](#)

### Zuschläge

- Mindermengenzuschlag
- Trockeneiszuschlag
- Gefahrgutzuschlag
- Expressversand

### SZABO-SCANDIC HandelsgmbH

Quellenstraße 110, A-1100 Wien

T. +43(0)1 489 3961-0

F. +43(0)1 489 3961-7

[mail@szabo-scandic.com](mailto:mail@szabo-scandic.com)

[www.szabo-scandic.com](http://www.szabo-scandic.com)

[linkedin.com/company/szaboscandic](https://www.linkedin.com/company/szaboscandic) 

# EEF1G purified MaxPab mouse polyclonal antibody (B01P) MaxPab®

Catalog # : H00001937-B01P

規格 : [ 50 ug ]

[List All](#)

## Specification

**Product Description:** Mouse polyclonal antibody raised against a full-length human EEF1G protein.

**Immunogen:** EEF1G (AAH15813, 1 a.a. ~ 437 a.a) full-length human protein.

**Sequence:**  
 MAAGTLTYTPENWRAFKALIAAQYSGAQVRVLSAPPHFHFHGQTNRTPEF  
 LRFKFPAGKVPAPFEGDDGFCVFESNAIAYHVSNEELRGSTPEAAAQVWQW  
 VSFADSDIVPPASTWVFPTLGMHHDKQATENAKEEVRRLGLLDAYLKT  
 RTFLVGERVTLADITVVCTLLWLYKQVLEPSFRQAFPNTNRWFLTCINQP  
 QFRAVLGEVKLCEKMAQFDAKKAETQPKKDTPRKEKGSREEKQKPQA  
 ERKEEKAAAAPAEEMDECEQALAAEPKAKDPFAHLPKSTFVLDEFKR  
 KYSNEDTLSVALPYFWEHFDKDGWSLWYSEYRPEELTQTFMSCNLIT  
 GMFQRLDKLRKNAFASVILFGTNNSSSISGWWVFRGQELAFPLSPDWQV  
 DYESTYWRKLDPGSEETQTLVREYF SWEGAFQHVHGKAFNQGKIFK

**Host:** Mouse

**Reactivity:** Human

**Quality Control Testing:** Antibody reactive against mammalian transfected lysate.

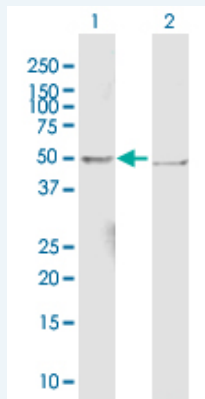
**Storage Buffer:** In 1x PBS, pH 7.4

**Storage Instruction:** Store at -20°C or lower. Aliquot to avoid repeated freezing and thawing.

**Datasheet:**  [Download](#)

## Applications


### Western Blot (Transfected lysate)



Western Blot analysis of EEF1G expression in transfected 293T cell line (H00001937-T01) by EEF1G MaxPab polyclonal antibody.

Lane 1: EEF1G transfected lysate(48.18 kDa).

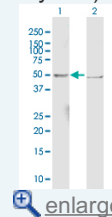
Lane 2: Non-transfected lysate.


 [Protocol Download](#)

### Immunofluorescence

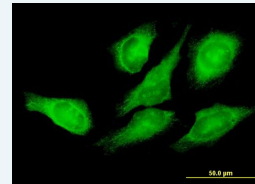
## Application Image


### Western Blot (Transfected lysate)

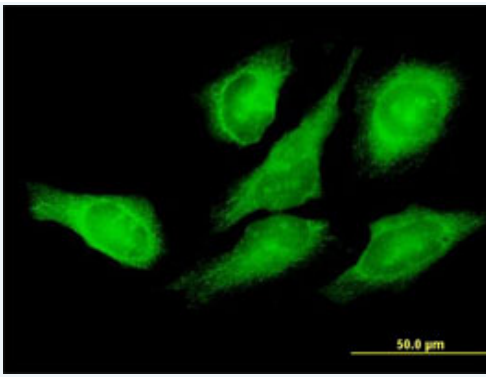


 [enlarge](#)

### Immunofluorescence



 [enlarge](#)



 enlarge this image

Immunofluorescence of purified MaxPab antibody to EEF1G on HeLa cell. [antibody concentration 10 ug/ml]

 [Protocol Download](#)

---

### Gene Information

---

**Entrez GeneID:** [1937](#)

**GeneBank  
Accession#:** [BC015813](#)

**Protein  
Accession#:** [AAH15813](#)

**Gene Name:** EEF1G

**Gene Alias:** EF1G,GIG35

**Gene  
Description:** eukaryotic translation elongation factor 1 gamma

**Omim ID:** [130593](#)

**Gene Ontology:** [Hyperlink](#)

**Gene Summary:** This gene encodes a subunit of the elongation factor-1 complex, which is responsible for the enzymatic delivery of aminoacyl tRNAs to the ribosome. This subunit contains an N-terminal glutathione transferase domain, which may be involved in regulating the assembly of multisubunit complexes containing this elongation factor and aminoacyl-tRNA synthetases. [provided by RefSeq]

**Other  
Designations:** EF-1-gamma,PRO1608,eEF-1B gamma,elongation factor 1-gamma,pancreatic tumor-related protein,translation elongation factor eEF-1 gamma chain

---

---

[服務條款](#) | [隱私權政策](#) | [著作及商標](#) | [網站地圖](#)

©2016 亞諾法生技股份有限公司 Abnova Corporation. 版權所有.