



SZABO SCANDIC

Part of Europa Biosite

Produktinformation



Forschungsprodukte & Biochemikalien



Zellkultur & Verbrauchsmaterial



Diagnostik & molekulare Diagnostik



Laborgeräte & Service

Weitere Information auf den folgenden Seiten!
See the following pages for more information!



Lieferung & Zahlungsart

siehe unsere [Liefer- und Versandbedingungen](#)

Zuschläge

- Mindermengenzuschlag
- Trockeneiszuschlag
- Gefahrgutzuschlag
- Expressversand

SZABO-SCANDIC HandelsgmbH

Quellenstraße 110, A-1100 Wien

T. +43(0)1 489 3961-0

F. +43(0)1 489 3961-7

mail@szabo-scandic.com

www.szabo-scandic.com

[linkedin.com/company/szaboscandic](https://www.linkedin.com/company/szaboscandic) 



EEF1G purified MaxPab rabbit polyclonal antibody (D01P) MaxPab®

Catalog # : H00001937-D01P

規格 : [100 ug]

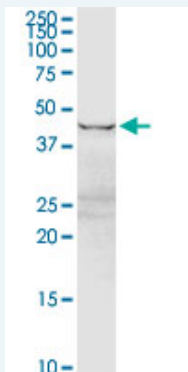
[List All](#)

Specification

Product Description:	Rabbit polyclonal antibody raised against a full-length human EEF1G protein.
Immunogen:	EEF1G (NP_001395.1, 1 a.a. ~ 437 a.a) full-length human protein.
Sequence:	MAAGTLTYTPENWRAFKALIAAQYSGAQVRVLSAPPHFHFGQTNRTPEFLRKFPAGKVPAFEGDDGFCVFESNAIAYVVSNEELRGSTPEAAAQVQWVSFADSDIVPPASTWVFPTLGIMHHNKQATENAKEEVRRILGLLDAYLKTRTFLVGERVTLADITVVCTLLWLYKQVLEPSFRQAFPNTRWFLTCINQPQFRAVLGEVKLCEKMAQFDAKKAETQPKKDTPRKEKGSREEKQKPQAEERKEEKAAAAPAEEMDECEQALAAEPKAKDPFAHLPKSTFVLDEFKRYKSNEDTLSVALPYFWEHFDKDGWLSWYSEYRFEELTQTFMSCNLITGMFQRLDKLRKNAFASVILFGTNNSSSISGWWVFRGQELAFPLSPDWQVDYESYTRKLDPGSEETQTLVREYFVWEGAFQHVHGKAFNQKIFK
Host:	Rabbit
Reactivity:	Human, Mouse, Rat
Quality Control Testing:	Antibody reactive against mammalian transfected lysate.
Storage Buffer:	In 1x PBS, pH 7.4
Storage Instruction:	Store at -20°C or lower. Aliquot to avoid repeated freezing and thawing.
MSDS:	 Download
Datasheet:	 Download

Applications

Western Blot (Tissue lysate)



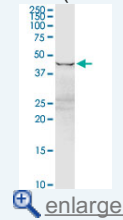
EEF1G MaxPab rabbit polyclonal antibody. Western Blot analysis of EEF1G expression in human placenta.

 [Protocol Download](#)

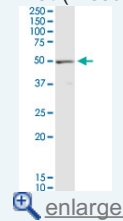
Western Blot (Tissue lysate)

Application Image

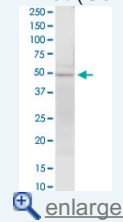
Western Blot (Tissue lysate)



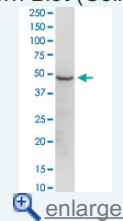
Western Blot (Tissue lysate)



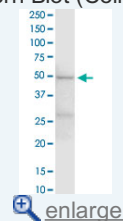
Western Blot (Cell lysate)



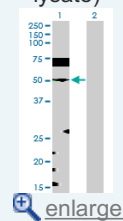
Western Blot (Cell lysate)

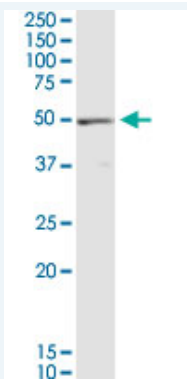


Western Blot (Cell lysate)




Western Blot (Transfected lysate)

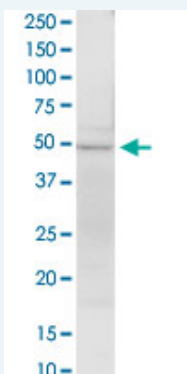





EEF1G MaxPab rabbit polyclonal antibody. Western Blot analysis of EEF1G expression in mouse testis.

 [Protocol Download](#)

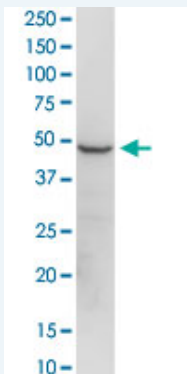
Western Blot (Cell lysate)



EEF1G MaxPab rabbit polyclonal antibody. Western Blot analysis of EEF1G expression in PC-12.

 [Protocol Download](#)

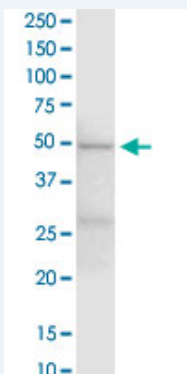
Western Blot (Cell lysate)



EEF1G MaxPab rabbit polyclonal antibody. Western Blot analysis of EEF1G expression in IMR-32.

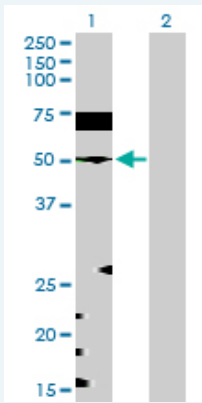
 [Protocol Download](#)

Western Blot (Cell lysate)



EEF1G MaxPab rabbit polyclonal antibody. Western Blot analysis of EEF1G expression in Raw 264.7.

Western Blot (Transfected lysate)



Western Blot analysis of EEF1G expression in transfected 293T cell line ([H00001937-T02](#)) by EEF1G MaxPab polyclonal antibody.

Lane 1: EEF1G transfected lysate(50.10 KDa).

Lane 2: Non-transfected lysate.

Gene Information

Entrez GeneID: [1937](#)

GeneBank Accession#: [NM_001404](#)

Protein Accession#: [NP_001395.1](#)

Gene Name: EEF1G

Gene Alias: EF1G,GIG35

Gene Description: eukaryotic translation elongation factor 1 gamma

Omim ID: [130593](#)

Gene Ontology: [Hyperlink](#)

Gene Summary: This gene encodes a subunit of the elongation factor-1 complex, which is responsible for the enzymatic delivery of aminoacyl tRNAs to the ribosome. This subunit contains an N-terminal glutathione transferase domain, which may be involved in regulating the assembly of multisubunit complexes containing this elongation factor and aminoacyl-tRNA synthetases. [provided by RefSeq]

Other Designations: EF-1-gamma,PRO1608,eEF-1B gamma,elongation factor 1-gamma,pancreatic tumor-related protein,translation elongation factor eEF-1 gamma chain