



SZABO SCANDIC

Part of Europa Biosite

Produktinformation



Forschungsprodukte & Biochemikalien



Zellkultur & Verbrauchsmaterial



Diagnostik & molekulare Diagnostik



Laborgeräte & Service

Weitere Information auf den folgenden Seiten!
See the following pages for more information!



Lieferung & Zahlungsart

siehe unsere [Liefer- und Versandbedingungen](#)

Zuschläge

- Mindermengenzuschlag
- Trockeneiszuschlag
- Gefahrgutzuschlag
- Expressversand

SZABO-SCANDIC HandelsgmbH

Quellenstraße 110, A-1100 Wien

T. +43(0)1 489 3961-0

F. +43(0)1 489 3961-7

mail@szabo-scandic.com

www.szabo-scandic.com

[linkedin.com/company/szaboscandic](https://www.linkedin.com/company/szaboscandic) 

EEF1G monoclonal antibody (M01), clone 3F11-1A10

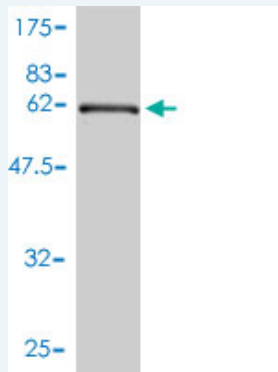
Catalog # : H00001937-M01

規格 : [100 ug]

List All

Specification

Product Description:	Mouse monoclonal antibody raised against a full length recombinant EEF1G.
Immunogen:	EEF1G (AAH15813.1, 1 a.a. ~ 437 a.a) full-length recombinant protein with GST tag. MW of the GST tag alone is 26 KDa.
Sequence:	MAAGTLYTPENWRAFKALIAAQYSGAQVRVLSAPPHFHFGQTNRTPFLRKFPAKVPAPAFEGDDGFCVFNESNAIAYHVSNEELRGSTPEAAAQVVQWVVFADSDIVPPASTWVFPPTLGLIMHDKQATENAKEEVRRILGLLDAYLKT RTFLVGERVTLADITVVCTLLWLYKQVLEPSFRQAFNPNTNRWFLTCINPQFRAVLGEVKLCEKMAQFDAKKFAETQPKKDTPRKEKGSREEKQKPQAEERKEEKAAAAPAEEMDECEQALAEPAKAKDPFAHLPKSTFVLDEFKRYKSNEDTLVALPYFWEHFDKDGWLSWYSEYRFPEELTQTFMSCNLITGMFQRLDKLRKNAFASVILFGTNNSSSISGVVWVFRGQELAFPLSPDWQVDYESYTWRLDPGSEETQTLVREYFSWEGAFQHVHGKAFNQKIFK
Host:	Mouse
Reactivity:	Human, Mouse, Rat
Isotype:	IgG1 kappa
Quality Control Testing:	Antibody Reactive Against Recombinant Protein.



Western Blot detection against Immunogen (73.59 KDa) .

Storage Buffer: In 1x PBS, pH 7.4

Storage Instruction: Store at -20°C or lower. Aliquot to avoid repeated freezing and thawing.

MSDS: [Download](#)

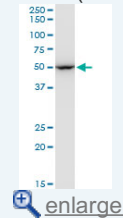
Datasheet: [Download](#)

Publication Reference

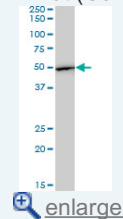
1. [The eEF1 gamma Subunit Contacts RNA Polymerase II and Binds Vimentin Promoter Region.](#)
Corbi N, Batassa EM, Pisani C, Onori A, Di Certo MG, Strimpakos G, Fanciulli M, Mattei E, Passananti C. PLoS One. 2010 Dec 31;5(12):e14481.

Application Image

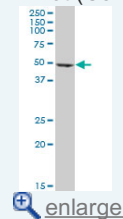
Western Blot (Cell lysate)



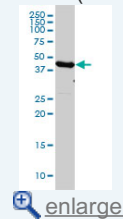
Western Blot (Cell lysate)



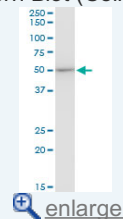
Western Blot (Cell lysate)



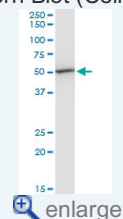
Western Blot (Cell lysate)



Western Blot (Cell lysate)



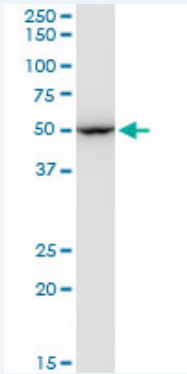
Western Blot (Cell lysate)



Western Blot (Transfected lysate)

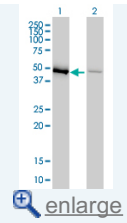
Applications

Western Blot (Cell lysate)



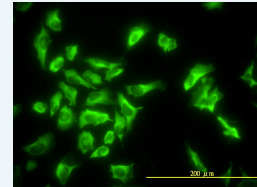
EEF1G monoclonal antibody (M01), clone 3F11-1A10. Western Blot analysis of EEF1G expression in PC-12 (Cat # L012V1).


 [Protocol Download](#)



Western Blot (Recombinant protein)

Immunofluorescence

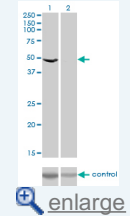


 [enlarge](#)

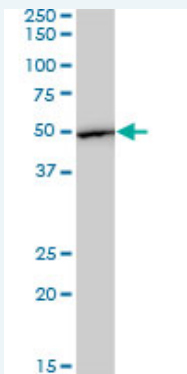
Sandwich ELISA (Recombinant protein)

ELISA

RNAi Knockdown (Antibody validated)



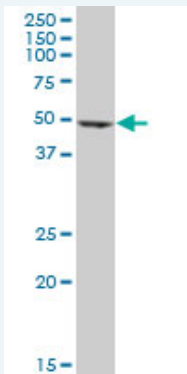
Western Blot (Cell lysate)



EEF1G monoclonal antibody (M01), clone 3F11-1A10. Western Blot analysis of EEF1G expression in HepG2 (Cat # L019V1).

 [Protocol Download](#)

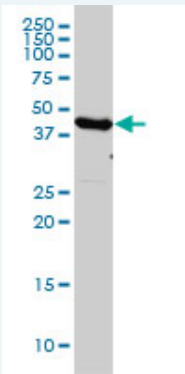
Western Blot (Cell lysate)



EEF1G monoclonal antibody (M01), clone 3F11-1A10. Western Blot analysis of EEF1G expression in 293 (Cat # L026V1).

 [Protocol Download](#)

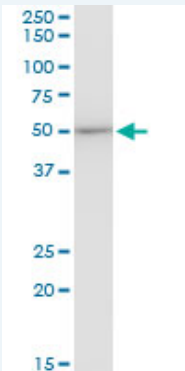
Western Blot (Cell lysate)



EEF1G monoclonal antibody (M01), clone 3F11-1A10 Western Blot analysis of EEF1G expression in HL-60 (Cat # L014V1).

 [Protocol Download](#)

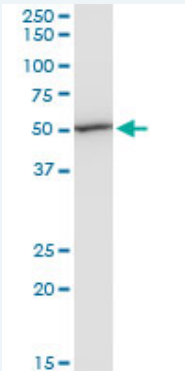
Western Blot (Cell lysate)



EEF1G monoclonal antibody (M01), clone 3F11-1A10. Western Blot analysis of EEF1G expression in Raw 264.7(Cat # L024V1).

 [Protocol Download](#)

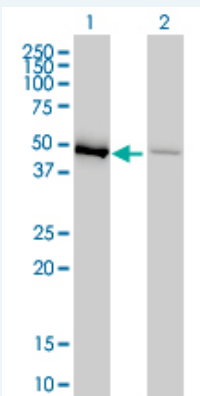
Western Blot (Cell lysate)



EEF1G monoclonal antibody (M01), clone 3F11-1A10. Western Blot analysis of EEF1G expression in NIH/3T3(Cat # L018V1).

 [Protocol Download](#)

Western Blot (Transfected lysate)



Western Blot analysis of EEF1G expression in transfected 293T cell line by EEF1G monoclonal antibody (M01), clone 3F11-1A10.

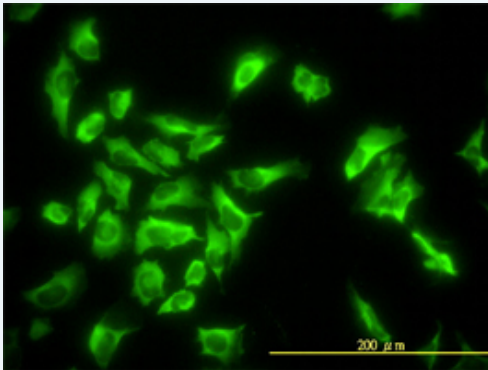
Lane 1: EEF1G transfected lysate(50 kDa).
Lane 2: Non-transfected lysate.

 [Protocol Download](#)

Western Blot (Recombinant protein)

 [Protocol Download](#)

Immunofluorescence



 [enlarge this image](#)

Immunofluorescence of monoclonal antibody to EEF1G on HeLa cell. [antibody concentration 10 ug/ml]

 [Protocol Download](#)

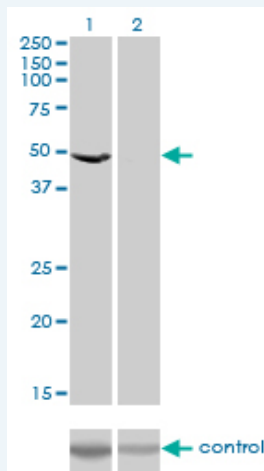
Sandwich ELISA (Recombinant protein)

Detection limit for recombinant GST tagged EEF1G is approximately 0.1ng/ml as a capture antibody.

 [Protocol Download](#)

ELISA

RNAi Knockdown (Antibody validated)



Western blot analysis of EEF1G over-expressed 293 cell line, cotransfected with EEF1G Validated Chimera RNAi (Cat # H00001937-R01V) (Lane 2) or non-transfected control (Lane 1). Blot probed with EEF1G monoclonal antibody (M01), clone 3F11-1A10 (Cat # H00001937-M01). GAPDH (36.1 kDa) used as specificity and loading control.

 [Protocol Download](#)

Gene Information

Entrez GeneID: [1937](#)

GeneBank [BC015813](#)
Accession#:

Protein [AAH15813.1](#)
Accession#:

Gene Name: EEF1G

Gene Alias: EF1G,GIG35

Gene Description: eukaryotic translation elongation factor 1 gamma

Omim ID: [130593](#)

Gene Ontology: [Hyperlink](#)

Gene Summary: This gene encodes a subunit of the elongation factor-1 complex, which is responsible for the enzymatic delivery of aminoacyl tRNAs to the ribosome. This subunit contains an N-terminal glutathione transferase domain, which may be involved in regulating the assembly of multisubunit complexes containing this elongation factor and aminoacyl-tRNA synthetases. [provided by RefSeq]

Other Designations: EF-1-gamma,PRO1608,eEF-1B gamma,elongation factor 1-gamma,pancreatic tumor-related protein,translation elongation factor eEF-1 gamma chain

[服務條款](#) | [隱私權政策](#) | [著作及商標](#) | [網站地圖](#)

©2016 亞諾法生技股份有限公司 Abnova Corporation. 版權所有.