



SZABO SCANDIC

Part of Europa Biosite

Produktinformation



Forschungsprodukte & Biochemikalien



Zellkultur & Verbrauchsmaterial



Diagnostik & molekulare Diagnostik



Laborgeräte & Service

Weitere Information auf den folgenden Seiten!
See the following pages for more information!



Lieferung & Zahlungsart

siehe unsere [Liefer- und Versandbedingungen](#)

Zuschläge

- Mindermengenzuschlag
- Trockeneiszuschlag
- Gefahrgutzuschlag
- Expressversand

SZABO-SCANDIC HandelsgmbH

Quellenstraße 110, A-1100 Wien

T. +43(0)1 489 3961-0

F. +43(0)1 489 3961-7

mail@szabo-scandic.com

www.szabo-scandic.com

[linkedin.com/company/szaboscandic](https://www.linkedin.com/company/szaboscandic) 

EFNA2 MaxPab mouse polyclonal antibody (B01) MaxPab®

Catalog # : H00001943-B01

規格 : [50 uL]

[List All](#)

Specification

Product Description: Mouse polyclonal antibody raised against a full-length human EFNA2 protein.

Immunogen: EFNA2 (AAI48728.1, 1 a.a. ~ 213 a.a) full-length human protein.

Sequence:
 MAPAQRPLLPLLLLLLPLPPPFARAEDAARANSRDYAVYWNRSNPRFH
 AGAGDDGGGYTVEVSINDYLDIYCPHYGAPLPPAERMHEYVLYMVNGEG
 HASCDHRQRGFKRWECNRPAAPGGPLKFSEKQLFTPFSLGFEFRRPG
 HEYYYISATPPNAVDRPCLRLKVYVRPTNETLYEAPEPIFTSNNSCSPGG
 CRLFLSTIPVLWTLGGS

Host: Mouse

Reactivity: Human

Quality Control Testing: Antibody reactive against mammalian transfected lysate.

Storage Buffer: No additive

Storage Instruction: Store at -20°C or lower. Aliquot to avoid repeated freezing and thawing.

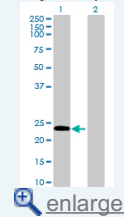
Note: For IHC and IF applications, antibody purification with Protein A will be needed prior to use.


MSDS:  [Download](#)

Datasheet:  [Download](#)

Application Image

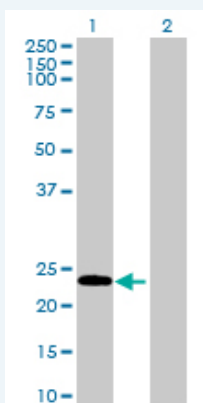
Western Blot (Transfected lysate)



 [enlarge](#)

Applications


Western Blot (Transfected lysate)



Western Blot analysis of EFNA2 expression in transfected 293T cell line (H00001943-T01) by EFNA2 MaxPab polyclonal antibody.

Lane 1: EFNA2 transfected lysate(23.43 KDa).

Lane 2: Non-transfected lysate.

 [Protocol Download](#)

Gene Information

Entrez GeneID: [1943](#)

GeneBank
Accession#: [BC148727](#)

Protein
Accession#: [AAI48728.1](#)

Gene Name: EFNA2

Gene Alias: ELF-1,EPLG6,HEK7-L,LERK6

Gene
Description: ephrin-A2

Omim ID: [602756](#)

Gene Ontology: [Hyperlink](#)

Gene Summary: This gene encodes a member of the ephrin family. The protein is composed of a signal sequence, a receptor-binding region, a spacer region, and a hydrophobic region. The EPH and EPH-related receptors comprise the largest subfamily of receptor protein-tyrosine kinases and have been implicated in mediating developmental events, particularly in the nervous system. Based on their structures and sequence relationships, ephrins are divided into the ephrin-A (EFNA) class, which are anchored to the membrane by a glycosylphosphatidylinositol linkage, and the ephrin-B (EFNB) class, which are transmembrane proteins. Posttranslational modifications determine whether this protein localizes to the nucleus or the cytoplasm. [provided by RefSeq]

Other
Designations: HEK7-ligand,eph-related receptor tyrosine kinase ligand 6,ligand of eph-related kinase 6

Gene Pathway

[Axon guidance](#)

[服務條款](#) | [隱私權政策](#) | [著作及商標](#) | [網站地圖](#)

©2016 亞諾法生技股份有限公司 Abnova Corporation. 版權所有.