



SZABO SCANDIC

Part of Europa Biosite

Produktinformation



Forschungsprodukte & Biochemikalien



Zellkultur & Verbrauchsmaterial



Diagnostik & molekulare Diagnostik



Laborgeräte & Service

Weitere Information auf den folgenden Seiten!
See the following pages for more information!



Lieferung & Zahlungsart

siehe unsere [Liefer- und Versandbedingungen](#)

Zuschläge

- Mindermengenzuschlag
- Trockeneiszuschlag
- Gefahrgutzuschlag
- Expressversand

SZABO-SCANDIC HandelsgmbH

Quellenstraße 110, A-1100 Wien

T. +43(0)1 489 3961-0

F. +43(0)1 489 3961-7

mail@szabo-scandic.com

www.szabo-scandic.com

[linkedin.com/company/szaboscandic](https://www.linkedin.com/company/szaboscandic) 

EGFR purified MaxPab rabbit polyclonal antibody (D01P) MaxPab®

Catalog # : H00001956-D01P

規格 : [100 ug]

[List All](#)

Specification

Product Description: Rabbit polyclonal antibody raised against a full-length human EGFR protein.

Immunogen: EGFR (NP_958440.1, 1 a.a. ~ 405 a.a) full-length human protein.

Sequence:
 MRPSGTAGAALLALLAALCPASRALEEKVKVCGGTSNKLTQLGTFEDHFL
 SLQRMFNCEVVLGNLEITYVQRNYDLSFLKTIQEVAGYVLIALNTVERIPL
 ENLQIIRGNMYEYNSYALAVLSNYDANKTGLKELPMRNLQEILHGAVRFSN
 NPALCNVESIQWRDIVSSDFLSNMSMDFQNHLGSCQKCDPSCPNGSCW
 GAGEENCQKLTKIIQAQQCSGRCRGKSPSDCCHNQCAAGCTGPRESDC
 LVCRKFRDEATCKDTCPLMLYNPTTYQMDVNPEGKYSFGATCVKKCP
 RNYVVTDHGSCVRACGADSYEMEEDGVRKCKKCEGPCRKVCNGIGIGE
 FKDSLINATNIKHFKNCTSISGDLHILPVAFRGDSFTHTPPLDPQELDILKT
 VKEITGLS

Host: Rabbit

Reactivity: Human

Quality Control Testing: Antibody reactive against mammalian transfected lysate.

Storage Buffer: In 1x PBS, pH 7.4

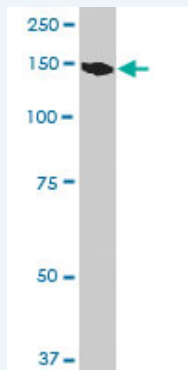
Storage Instruction: Store at -20°C or lower. Aliquot to avoid repeated freezing and thawing.

MSDS: [Download](#)

Datasheet: [Download](#)

Applications

Western Blot (Cell lysate)



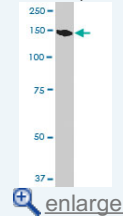
EGFR MaxPab rabbit polyclonal antibody. Western Blot analysis of EGFR expression in A-431.

[Protocol Download](#)

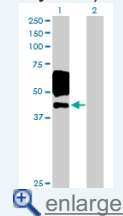
Western Blot (Transfected lysate)

Application Image

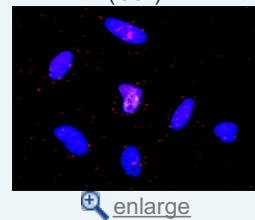
Western Blot (Cell lysate)

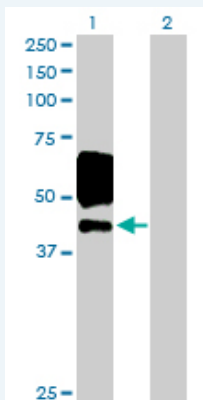


Western Blot (Transfected lysate)



In situ Proximity Ligation Assay (Cell)



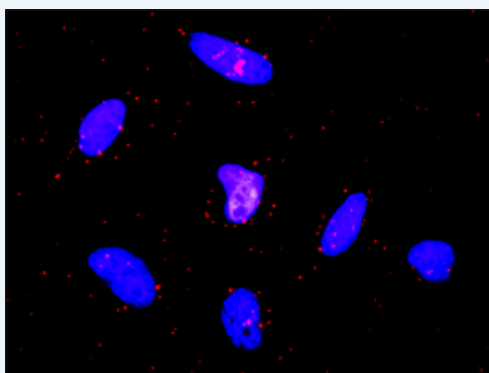


Western Blot analysis of EGFR expression in transfected 293T cell line ([H00001956-T01](#)) by EGFR MaxPab polyclonal antibody.

Lane 1: EGFR transfected lysate(44.70 KDa).
Lane 2: Non-transfected lysate.

Protocol Download

In situ Proximity Ligation Assay (Cell)



Proximity Ligation Analysis of protein-protein interactions between EGFR and CTNNA1. HeLa cells were stained with anti-EGFR rabbit purified polyclonal 1:1200 and anti-CTNNA1 mouse monoclonal antibody 1:50. Each red dot represents the detection of protein-protein interaction complex, and nuclei were counterstained with DAPI (blue).

Gene Information

Entrez GeneID: [1956](#)

GeneBank [NM_201283](#)
Accession#:

Protein [NP_958440.1](#)
Accession#:

Gene Name: EGFR

Gene Alias: ERBB,ERBB1,HER1,PIG61,mENA

Gene Description: epidermal growth factor receptor (erythroblastic leukemia viral (v-erb-b) oncogene homolog, avian)

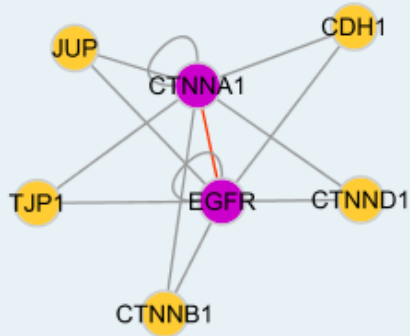
Omim ID: [131550](#), [211980](#)

Gene Ontology: [Hyperlink](#)

Gene Summary: The protein encoded by this gene is a transmembrane glycoprotein that is a member of the protein kinase superfamily. This protein is a receptor for members of the epidermal growth factor family. EGFR is a cell surface protein that binds to epidermal growth factor. Binding of the protein to a ligand induces receptor dimerization and tyrosine autophosphorylation and leads to cell proliferation. Mutations in this gene are associated with lung cancer. [provided by RefSeq

Other avian erythroblastic leukemia viral (v-erb-b) oncogene homolog, cell
Designations: growth inhibiting protein 40, cell proliferation-inducing protein
61, epidermal growth factor receptor

Interactome



Gene Pathway

[Adherens junction](#) [Bladder cancer](#) [Calcium signaling pathway](#) [Colorectal cancer](#)
[Cytokine-cytokine receptor interaction](#) [Dorso-ventral axis formation](#) [Endocytosis](#)
[Endometrial cancer](#) [Epithelial cell signaling in Helicobacter pylori infection](#)
[ErbB signaling pathway](#) [Focal adhesion](#) [Gap junction](#) [Glioma](#) [GnRH signaling pathway](#)
[MAPK signaling pathway](#) [Melanoma](#) [Non-small cell lung cancer](#) [Pancreatic cancer](#)
[Pathways in cancer](#) [Prostate cancer](#) [Regulation of actin cytoskeleton](#)

Related Disease

[Adenocarcinoma](#) [Adenocarcinoma, Bronchiolo-Alveolar](#) [Adenocarcinoma, Mucinous](#)
[Adenocarcinoma, Papillary](#) [Anus Neoplasms](#) [Asthma](#) [Asthma](#) [Astrocytoma](#) [Atherosclerosis](#)
[Barrett Esophagus](#) [Bile Duct Neoplasms](#) [Biliary Tract Neoplasms](#) [Bipolar Disorder](#)
[Brain Neoplasms](#) [Breast cancer](#) [Breast Neoplasms](#) [Bronchial Hyperreactivity](#) [Carcinoma](#)
[Carcinoma, Adenosquamous](#)

... see more

[服務條款](#) | [隱私權政策](#) | [著作及商標](#) | [網站地圖](#)

©2016 亞諾法生技股份有限公司 Abnova Corporation. 版權所有.