



SZABO SCANDIC

Part of Europa Biosite

Produktinformation



Forschungsprodukte & Biochemikalien



Zellkultur & Verbrauchsmaterial



Diagnostik & molekulare Diagnostik



Laborgeräte & Service

Weitere Information auf den folgenden Seiten!
See the following pages for more information!



Lieferung & Zahlungsart

siehe unsere [Liefer- und Versandbedingungen](#)

Zuschläge

- Mindermengenzuschlag
- Trockeneiszuschlag
- Gefahrgutzuschlag
- Expressversand

SZABO-SCANDIC HandelsgmbH

Quellenstraße 110, A-1100 Wien

T. +43(0)1 489 3961-0

F. +43(0)1 489 3961-7

mail@szabo-scandic.com

www.szabo-scandic.com

[linkedin.com/company/szaboscandic](https://www.linkedin.com/company/szaboscandic) 

EGR1 monoclonal antibody (M03), clone 6E8

Catalog # : H00001958-M03

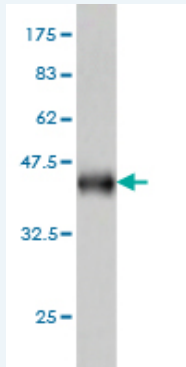
規格 : [100 ug]

[List All](#)

Specification

Product Description:	Mouse monoclonal antibody raised against a partial recombinant EGR1.
Immunogen:	EGR1 (NP_001955, 444 a.a. ~ 543 a.a) partial recombinant protein with GST tag. MW of the GST tag alone is 26 KDa.
Sequence:	SPVATSYSPVTTSYSPATTSYSPVPTSFSSPGSSTYPSPVHSGFPS PSVATTYSSVPPAFPAQVSSFPSAVTNSFSASTGLSDMTATFSPRTIEI C
Host:	Mouse
Reactivity:	Human
Isotype:	IgG2a Kappa

Quality Control Testing: Antibody Reactive Against Recombinant Protein.



Western Blot detection against Immunogen (36.74 KDa) .

Storage Buffer: In 1x PBS, pH 7.4

Storage Instruction: Store at -20°C or lower. Aliquot to avoid repeated freezing and thawing.

MSDS: [Download](#)

Datasheet: [Download](#)

Publication Reference

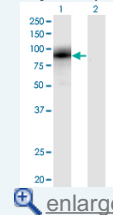
1. [Induction of hypertrophy in vitro by mechanical loading in adult rabbit myocardium.](#) Bupha-Intr T, Holmes JW, Janssen PM. *Am J Physiol Heart Circ Physiol.* 2007 Dec;293(6):H3759-67. Epub 2007 Oct 12.

Applications

Western Blot (Transfected lysate)

Application Image

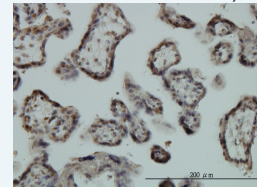
Western Blot (Transfected lysate)



[enlarge](#)

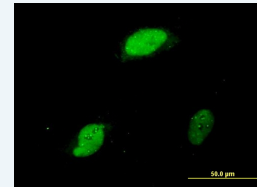
Western Blot (Recombinant protein)

Immunohistochemistry (Formalin/PFA-fixed paraffin-embedded sections)



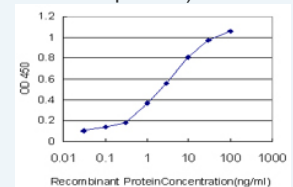
[enlarge](#)

Immunofluorescence



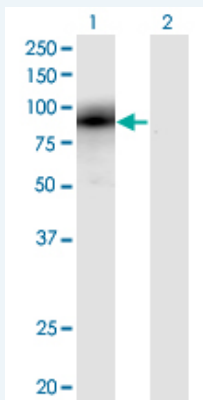
[enlarge](#)

Sandwich ELISA (Recombinant protein)




[enlarge](#)

ELISA




Western Blot analysis of EGR1 expression in transfected 293T cell line by EGR1 monoclonal antibody (M03), clone 6E8.

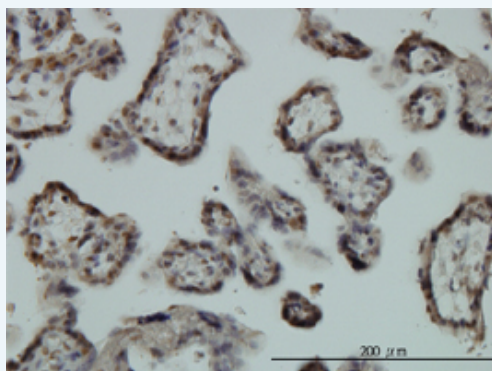
Lane 1: EGR1 transfected lysate(59.73 KDa).
Lane 2: Non-transfected lysate.

 [Protocol Download](#)

Western Blot (Recombinant protein)

 [Protocol Download](#)

Immunohistochemistry (Formalin/PFA-fixed paraffin-embedded sections)

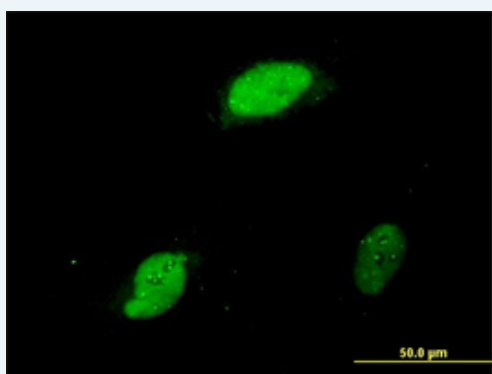



 [enlarge this image](#)

Immunoperoxidase of monoclonal antibody to EGR1 on formalin-fixed paraffin-embedded human placenta. [antibody concentration 3 ug/ml]


 [Protocol Download](#)

Immunofluorescence

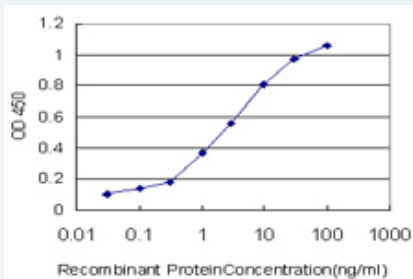


 [enlarge this image](#)


Immunofluorescence of monoclonal antibody to EGR1 on HeLa cell. [antibody concentration 10 ug/ml]

 [Protocol Download](#)

Sandwich ELISA (Recombinant protein)



Detection limit for recombinant GST tagged EGR1 is approximately 0.1ng/ml as a capture antibody.

 [Protocol Download](#)

ELISA

Gene Information

Entrez GeneID: [1958](#)

GeneBank [NM_001964](#)

Accession#:

Protein [NP_001955](#)

Accession#:

Gene Name: EGR1

Gene Alias: AT225,G0S30,KROX-24,NGFI-A,TIS8,ZIF-268,ZNF225

Gene Description: early growth response 1

Omim ID: [128990](#)

Gene Ontology: [Hyperlink](#)

Gene Summary: The protein encoded by this gene belongs to the EGR family of C2H2-type zinc-finger proteins. It is a nuclear protein and functions as a transcriptional regulator. The products of target genes it activates are required for differentiation and mitogenesis. Studies suggest this is a cancer suppressor gene. [provided by RefSeq]

Other Designations: early growth response protein 1,nerve growth factor-induced protein A,transcription factor ETR103,zinc finger protein 225

Gene Pathway

[Prion diseases](#)

Related Disease

[Asthma](#) [Asthma Genetic Predisposition to Disease](#) [Myopia](#) [Rhinitis, Allergic, Perennial](#) [Schizophrenia](#)