



# SZABO SCANDIC

Part of Europa Biosite

## Produktinformation



Forschungsprodukte & Biochemikalien



Zellkultur & Verbrauchsmaterial



Diagnostik & molekulare Diagnostik



Laborgeräte & Service

Weitere Information auf den folgenden Seiten!  
See the following pages for more information!



### Lieferung & Zahlungsart

siehe unsere [Liefer- und Versandbedingungen](#)

### Zuschläge

- Mindermengenzuschlag
- Trockeneiszuschlag
- Gefahrgutzuschlag
- Expressversand

### SZABO-SCANDIC HandelsgmbH

Quellenstraße 110, A-1100 Wien

T. +43(0)1 489 3961-0

F. +43(0)1 489 3961-7

[mail@szabo-scandic.com](mailto:mail@szabo-scandic.com)

[www.szabo-scandic.com](http://www.szabo-scandic.com)

[linkedin.com/company/szaboscandic](https://www.linkedin.com/company/szaboscandic) 

## EGR1 monoclonal antibody (M05), clone 6A10

Catalog # : H00001958-M05

規格 : [ 100 ug ]

[List All](#)

### Specification

**Product Description:** Mouse monoclonal antibody raised against a partial recombinant EGR1.

**Immunogen:** EGR1 (NP\_001955, 444 a.a. ~ 543 a.a) partial recombinant protein with GST tag. MW of the GST tag alone is 26 KDa.

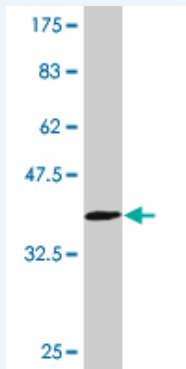
**Sequence:** SPVATSYSPVTTTSPSPATTSYPSPVPTSFSSPGSSTYPSPVHSGFPS  
PSVATTYSSVPPAFPAQVSSFPSAVTNSFSASTGLSDMTATFSPRTIEI  
C

**Host:** Mouse

**Reactivity:** Human

**Isotype:** IgG2b Kappa

**Quality Control Testing:** Antibody Reactive Against Recombinant Protein.



Western Blot detection against Immunogen (36.74 KDa) .

**Storage Buffer:** In 1x PBS, pH 7.4

**Storage Instruction:** Store at -20°C or lower. Aliquot to avoid repeated freezing and thawing.

**MSDS:** [Download](#)

**Datasheet:** [Download](#)

### Applications

**Western Blot (Recombinant protein)**

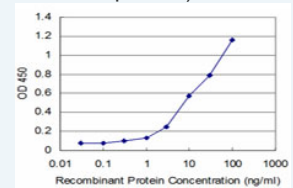
[Protocol Download](#)

**Sandwich ELISA (Recombinant protein)**

### Application Image

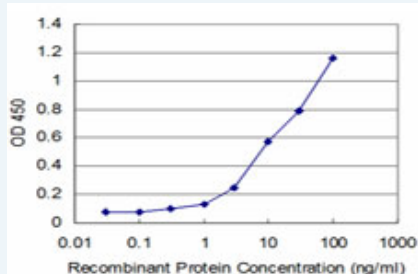
Western Blot (Recombinant protein)

Sandwich ELISA (Recombinant protein)



[enlarge](#)

ELISA



Detection limit for recombinant GST tagged EGR1 is approximately 1ng/ml as a capture antibody.

 [Protocol Download](#)

## ELISA

### Gene Information

**Entrez GeneID:** [1958](#)

**GeneBank** [NM\\_001964](#)

**Accession#:**

**Protein** [NP\\_001955](#)

**Accession#:**

**Gene Name:** EGR1

**Gene Alias:** AT225,G0S30,KROX-24,NGFI-A,TIS8,ZIF-268,ZNF225

**Gene Description:** early growth response 1

**Omim ID:** [128990](#)

**Gene Ontology:** [Hyperlink](#)

**Gene Summary:** The protein encoded by this gene belongs to the EGR family of C2H2-type zinc-finger proteins. It is a nuclear protein and functions as a transcriptional regulator. The products of target genes it activates are required for differentiation and mitogenesis. Studies suggest this is a cancer suppressor gene. [provided by RefSeq]

**Other Designations:** early growth response protein 1,nerve growth factor-induced protein A,transcription factor ETR103,zinc finger protein 225

### Gene Pathway

[Prion diseases](#)

### Related Disease

[Asthma](#) [Asthma Genetic Predisposition to Disease](#) [Myopia](#) [Rhinitis, Allergic, Perennial](#) [Schizophrenia](#)