



# SZABO SCANDIC

Part of Europa Biosite

## Produktinformation



Forschungsprodukte & Biochemikalien



Zellkultur & Verbrauchsmaterial



Diagnostik & molekulare Diagnostik



Laborgeräte & Service

Weitere Information auf den folgenden Seiten!  
See the following pages for more information!



### Lieferung & Zahlungsart

siehe unsere [Liefer- und Versandbedingungen](#)

### Zuschläge

- Mindermengenzuschlag
- Trockeneiszuschlag
- Gefahrgutzuschlag
- Expressversand

### SZABO-SCANDIC HandelsgmbH

Quellenstraße 110, A-1100 Wien

T. +43(0)1 489 3961-0

F. +43(0)1 489 3961-7

[mail@szabo-scandic.com](mailto:mail@szabo-scandic.com)

[www.szabo-scandic.com](http://www.szabo-scandic.com)

[linkedin.com/company/szaboscandic](https://www.linkedin.com/company/szaboscandic) 

## EGR2 MaxPab mouse polyclonal antibody (B01) MaxPab®

Catalog # : H00001959-B01

規格 : [ 50 uL ]

[List All](#)

### Specification

**Product Description:** Mouse polyclonal antibody raised against a full-length human EGR2 protein.

**Immunogen:** EGR2 (NP\_000390.2, 1 a.a. ~ 476 a.a) full-length human protein.

**Sequence:**  
 MMTAKAVDKIPVTLSGFVHQLSDNIYPVEDLAATSVTIFPNAELGGPFDDQ  
 MNGVAGDGMINDMTGEKRSLDLPYPSSFAPVSAPRNQTFYMGKFSID  
 PQYPGASCYPEGIINVSAGILQGVTSPASTTASSSVTSASPENPLATGPLG  
 VCTMSQTQPDLDHLYSPPPPPPPYSGCAGDLYQDPSAFLSAATTSTSS  
 SLAYPPPPSYSPKPADPGLFPMIPDYGGFFPSQCQRDLHGTAAGPDRK  
 PFPCPLDTRLVPPPLTPLSTIRNFTLGGPSAGVTGPGASGGSEGPRPLPG  
 SSSAAAAAAAAAYNPHHLPLRPILRPRKYPNRPSKTPVHERPYCPAEG  
 CDRRF SRSDELTRHIRIHTGHKPFQCRICMRNFSRSDHLTTHIRHTHTGEK  
 PFACDYCGRK FARSDERKRHTKIHLRQKERKSSAPSASVPAPSTASCSG  
 GVQPGGTLCSSNSSSLGGGLAPCSSRTRTP

**Host:** Mouse

**Reactivity:** Human

**Quality Control Testing:** Antibody reactive against mammalian transfected lysate.

**Storage Buffer:** No additive

**Storage Instruction:** Store at -20°C or lower. Aliquot to avoid repeated freezing and thawing.

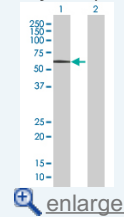
**Note:** For IHC and IF applications, antibody purification with Protein A will be needed prior to use.

**MSDS:** [Download](#)

**Datasheet:** [Download](#)

### Application Image

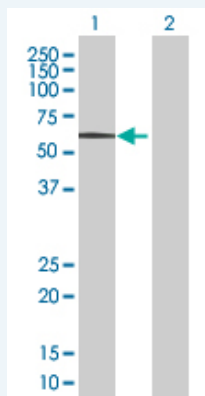
Western Blot (Transfected lysate)



[enlarge](#)

### Applications

#### Western Blot (Transfected lysate)



Western Blot analysis of EGR2 expression in transfected 293T cell line (H00001959-T01) by EGR2 MaxPab polyclonal antibody.

Lane 1: EGR2 transfected lysate(52.36 KDa).  
Lane 2: Non-transfected lysate.

 [Protocol Download](#)

---

### Gene Information

---

**Entrez GeneID:** [1959](#)

**GeneBank  
Accession#:** [NM\\_000399.2](#)

**Protein  
Accession#:** [NP\\_000390.2](#)

**Gene Name:** EGR2

**Gene Alias:** AT591,CMT1D,CMT4E,DKFZp686J1957,FLJ14547,KROX20

**Gene  
Description:** early growth response 2 (Krox-20 homolog, Drosophila)

**Omim ID:** [129010](#), [145900](#), [605253](#), [607678](#)

**Gene Ontology:** [Hyperlink](#)

**Gene Summary:** The protein encoded by this gene is a transcription factor with three tandem C2H2-type zinc fingers. Defects in this gene are associated with Charcot-Marie-Tooth disease type 1D (CMT1D), Charcot-Marie-Tooth disease type 4E (CMT4E), and with Dejerine-Sottas syndrome (DSS). Multiple transcript variants encoding two different isoforms have been found for this gene. [provided by RefSeq]

**Other  
Designations:** KROX-20, Drosophila, homolog (early growth response-2),Krox-20 homolog,OTTHUMP00000062133,early growth response 2 protein

---

### Related Disease

---

[Alzheimer Disease](#) [Alzheimer disease](#) [Cardiovascular Diseases](#)  
[Charcot-Marie-Tooth Disease](#) [Deafness](#) [Deafness](#) [Diabetes Complications](#)  
[Genetic Predisposition to Disease](#)  
[Hereditary Central Nervous System Demyelinating Diseases](#)  
[Lupus Erythematosus](#), [Systemic Metabolic Syndrome X](#) [Neoplasms](#) [Osteoporosis](#)  
[Ovarian Neoplasms](#) [Schizophrenia](#) [Scoliosis](#)

---

[服務條款](#) | [隱私權政策](#) | [著作及商標](#) | [網站地圖](#)

©2016 亞諾法生技股份有限公司 Abnova Corporation. 版權所有.