



SZABO SCANDIC

Part of Europa Biosite

Produktinformation



Forschungsprodukte & Biochemikalien



Zellkultur & Verbrauchsmaterial



Diagnostik & molekulare Diagnostik



Laborgeräte & Service

Weitere Information auf den folgenden Seiten!
See the following pages for more information!



Lieferung & Zahlungsart

siehe unsere [Liefer- und Versandbedingungen](#)

Zuschläge

- Mindermengenzuschlag
- Trockeneiszuschlag
- Gefahrgutzuschlag
- Expressversand

SZABO-SCANDIC HandelsgmbH

Quellenstraße 110, A-1100 Wien

T. +43(0)1 489 3961-0

F. +43(0)1 489 3961-7

mail@szabo-scandic.com

www.szabo-scandic.com

[linkedin.com/company/szaboscandic](https://www.linkedin.com/company/szaboscandic) 

EGR2 purified MaxPab mouse polyclonal antibody (B01P) MaxPab®

Catalog # : H00001959-B01P

規格 : [50 ug]

[List All](#)

Specification

Product Description: Mouse polyclonal antibody raised against a full-length human EGR2 protein.

Immunogen: EGR2 (NP_000390.2, 1 a.a. ~ 476 a.a) full-length human protein.

Sequence:
 MMTAKAVDKIPVTLSGFVHQLSDNIYPVEDLAATSVTIFPNAELGGPFDDQ
 MNGVAGDGMINDMTGEKRSLDLPYPSSFAPVSAPRNQTFYMGKFSID
 PQYPGASCYPEGIINVSAGILQGVTSPASTTASSSVTSASPENPLATGPLG
 VCTMSQTQPDLDHLYSPPPPPPPYSGCAGDLYQDPSAFLSAATTSTSS
 SLAYPPPPSPYSPKPADDPGLFPMIPDYGGFFPSQCQRDLHGTA GPDRK
 PFPCPLDTLRVPPPLTPLSTIRNFTLGGPSAGVTGPGASGGSEGPRLPG
 SSSAAAAAAAAAAYNPHHLPLRPILRPRKYPNRPSKTPVHERPYCPAEG
 CDRRF SRSDDELTRHIRIHTGHKPFQCRICMRNFSRSDHLLTHIRHTHTGEK
 PFACDYCGRK FARSDERKRHTKIHLRQKERKSSAPSASVPAPSTASCSG
 GVQPGGTLCSSNSSSLGGGLAPCSSRTRTP

Host: Mouse

Reactivity: Human

Quality Control Testing: Antibody reactive against mammalian transfected lysate.

Storage Buffer: In 1x PBS, pH 7.4

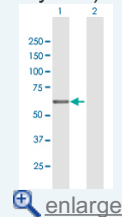
Storage Instruction: Store at -20°C or lower. Aliquot to avoid repeated freezing and thawing.

MSDS: [Download](#)

Datasheet: [Download](#)

Application Image

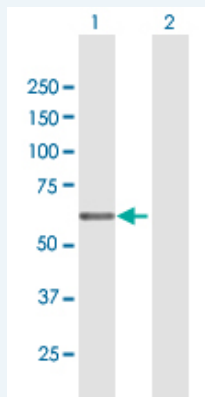
Western Blot (Transfected lysate)



[enlarge](#)

Applications

Western Blot (Transfected lysate)



Western Blot analysis of EGR2 expression in transfected 293T cell line (H00001959-T01) by EGR2 MaxPab polyclonal antibody.

Lane 1: EGR2 transfected lysate(52.36 KDa).
 Lane 2: Non-transfected lysate.

Gene Information

Entrez GeneID: [1959](#)

GeneBank Accession#: [NM_000399.2](#)

Protein Accession#: [NP_000390.2](#)

Gene Name: EGR2

Gene Alias: AT591,CMT1D,CMT4E,DKFZp686J1957,FLJ14547,KROX20

Gene Description: early growth response 2 (Krox-20 homolog, Drosophila)

Omim ID: [129010](#), [145900](#), [605253](#), [607678](#)

Gene Ontology: [Hyperlink](#)

Gene Summary: The protein encoded by this gene is a transcription factor with three tandem C2H2-type zinc fingers. Defects in this gene are associated with Charcot-Marie-Tooth disease type 1D (CMT1D), Charcot-Marie-Tooth disease type 4E (CMT4E), and with Dejerine-Sottas syndrome (DSS). Multiple transcript variants encoding two different isoforms have been found for this gene. [provided by RefSeq]

Other Designations: KROX-20, Drosophila, homolog (early growth response-2),Krox-20 homolog,OTTHUMP00000062133,early growth response 2 protein

Related Disease

- [Alzheimer Disease](#) [Alzheimer disease](#) [Cardiovascular Diseases](#)
- [Charcot-Marie-Tooth Disease](#) [Deafness](#) [Deafness](#) [Diabetes Complications](#)
- [Genetic Predisposition to Disease](#)
- [Hereditary Central Nervous System Demyelinating Diseases](#)
- [Lupus Erythematosus](#), [Systemic Metabolic Syndrome X](#) [Neoplasms](#) [Osteoporosis](#)
- [Ovarian Neoplasms](#) [Schizophrenia](#) [Scoliosis](#)