



# SZABO SCANDIC

Part of Europa Biosite

## Produktinformation



Forschungsprodukte & Biochemikalien



Zellkultur & Verbrauchsmaterial



Diagnostik & molekulare Diagnostik



Laborgeräte & Service

Weitere Information auf den folgenden Seiten!  
See the following pages for more information!



### Lieferung & Zahlungsart

siehe unsere [Liefer- und Versandbedingungen](#)

### Zuschläge

- Mindermengenzuschlag
- Trockeneiszuschlag
- Gefahrgutzuschlag
- Expressversand

### SZABO-SCANDIC HandelsgmbH

Quellenstraße 110, A-1100 Wien

T. +43(0)1 489 3961-0

F. +43(0)1 489 3961-7

[mail@szabo-scandic.com](mailto:mail@szabo-scandic.com)

[www.szabo-scandic.com](http://www.szabo-scandic.com)

[linkedin.com/company/szaboscandic](https://www.linkedin.com/company/szaboscandic) 

# EGR2 purified MaxPab mouse polyclonal antibody (B03P) MaxPab®

Catalog # : H00001959-B03P

規格 : [ 50 ug ]

[List All](#)

## Specification

**Product Description:** Mouse polyclonal antibody raised against a full-length human EGR2 protein.

**Immunogen:** EGR2 (NP\_000390.2, 1 a.a. ~ 476 a.a) full-length human protein.

**Sequence:**  
 MMTAKAVDKIPVTLSGFVHQLSDNIYPVEDLAATSVTIFPNAELGGPFDDQ  
 MNGVAGDGMINDMTGEKRSLDLPYPSSFAPVSAPRNQTFYMGKFSID  
 PQYPGASCYPEGIINVSAGILQGVTSPASTTASSSVTSASPENPLATGPLG  
 VCTMSQTQPDLDHLYSPPPPPPPYSGCAGDLYQDPSAFLSAATTSTSS  
 SLAYPPPPSPYSPKPADPGLFPMIPDYGGFFPSQCQRDLHGTAAGPDRK  
 PFPCPLDTRLRVPPPLTPLSTIRNFTLGGPSAGVTGPGASGGSEGPRPLPG  
 SSSAAAAAAAAAAYNPHHLPLRPILRPRKYPNRPSKTPVHERPYCPAEG  
 CDRRFSRSDELTRHIRIHTGHKPFQCRICMRNFSRSDHLTTHIRHTHTGEK  
 PFACDYCGRKFAKRSRDERKRHTKIHLRQKERKSSAPSASVPAPSTASCSG  
 GVQPGGTLCSSNSSSLGGGPLAPCSSRTRTP

**Host:** Mouse

**Reactivity:** Human

**Quality Control Testing:** Antibody reactive against mammalian transfected lysate.

**Storage Buffer:** In 1x PBS, pH 7.4

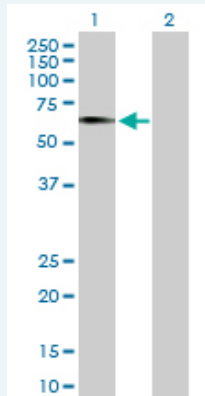
**Storage Instruction:** Store at -20°C or lower. Aliquot to avoid repeated freezing and thawing.

**MSDS:**  [Download](#)

**Datasheet:**  [Download](#)

## Applications

### Western Blot (Transfected lysate)

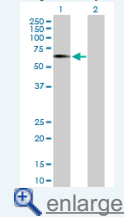


Western Blot analysis of EGR2 expression in transfected 293T cell line (H00001959-T02) by EGR2 MaxPab polyclonal antibody.

Lane 1: EGR2 transfected lysate(52.36 KDa).  
 Lane 2: Non-transfected lysate.

## Application Image

### Western Blot (Transfected lysate)

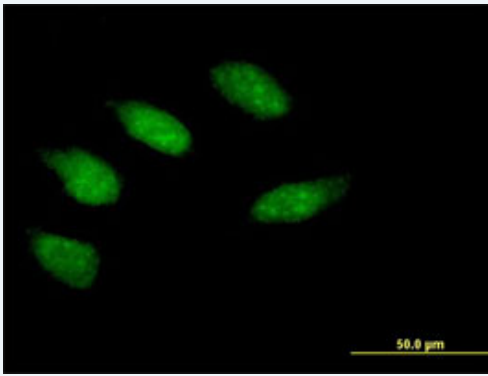



### Immunofluorescence



[enlarge](#)

### Immunofluorescence



 enlarge this image

Immunofluorescence of purified MaxPab antibody to EGR2 on HeLa cell. [antibody concentration 10 ug/ml]

### Gene Information

**Entrez GeneID:** [1959](#)

**GeneBank Accession#:** [NM\\_000399.2](#)

**Protein Accession#:** [NP\\_000390.2](#)

**Gene Name:** EGR2

**Gene Alias:** AT591,CMT1D,CMT4E,DKFZp686J1957,FLJ14547,KROX20

**Gene Description:** early growth response 2 (Krox-20 homolog, Drosophila)

**Omim ID:** [129010](#), [145900](#), [605253](#), [607678](#)

**Gene Ontology:** [Hyperlink](#)

**Gene Summary:** The protein encoded by this gene is a transcription factor with three tandem C2H2-type zinc fingers. Defects in this gene are associated with Charcot-Marie-Tooth disease type 1D (CMT1D), Charcot-Marie-Tooth disease type 4E (CMT4E), and with Dejerine-Sottas syndrome (DSS). Multiple transcript variants encoding two different isoforms have been found for this gene. [provided by RefSeq]

**Other Designations:** KROX-20, Drosophila, homolog (early growth response-2),Krox-20 homolog,OTTHUMP00000062133,early growth response 2 protein

### Related Disease

[Alzheimer Disease](#) [Alzheimer disease](#) [Cardiovascular Diseases](#)  
[Charcot-Marie-Tooth Disease](#) [Deafness](#) [Deafness](#) [Diabetes Complications](#)  
[Genetic Predisposition to Disease](#)  
[Hereditary Central Nervous System Demyelinating Diseases](#)  
[Lupus Erythematosus](#), [Systemic](#) [Metabolic Syndrome X](#) [Neoplasms](#) [Osteoporosis](#)  
[Ovarian Neoplasms](#) [Schizophrenia](#) [Scoliosis](#)