



SZABO SCANDIC

Part of Europa Biosite

Produktinformation



Forschungsprodukte & Biochemikalien



Zellkultur & Verbrauchsmaterial



Diagnostik & molekulare Diagnostik



Laborgeräte & Service

Weitere Information auf den folgenden Seiten!
See the following pages for more information!



Lieferung & Zahlungsart

siehe unsere [Liefer- und Versandbedingungen](#)

Zuschläge

- Mindermengenzuschlag
- Trockeneiszuschlag
- Gefahrgutzuschlag
- Expressversand

SZABO-SCANDIC HandelsgmbH

Quellenstraße 110, A-1100 Wien

T. +43(0)1 489 3961-0

F. +43(0)1 489 3961-7

mail@szabo-scandic.com

www.szabo-scandic.com

[linkedin.com/company/szaboscandic](https://www.linkedin.com/company/szaboscandic)

EGR2 monoclonal antibody (M03), clone 1G5

Catalog # : H00001959-M03

規格 : [100 ug]

[List All](#)

Specification

Product Description: Mouse monoclonal antibody raised against a partial recombinant EGR2.

Immunogen: EGR2 (NP_000390.2, 217 a.a. ~ 293 a.a) partial recombinant protein with GST tag. MW of the GST tag alone is 26 KDa.

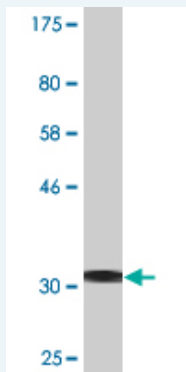
Sequence: PGLFPMIPDYPGFFPSQCQRDLHGTTAGPDRKPFPCPLDTRLRVPPLTPLSTIRNFTLGGPSAGVTGPGASGGSEGPR

Host: Mouse

Reactivity: Human, Rat

Isotype: IgG2b Kappa

Quality Control Testing: Antibody Reactive Against Recombinant Protein.



Western Blot detection against Immunogen (34.21 KDa) .

Storage Buffer: In 1x PBS, pH 7.4

Storage Instruction: Store at -20°C or lower. Aliquot to avoid repeated freezing and thawing.

MSDS: [Download](#)

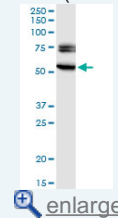
Datasheet: [Download](#)

Applications

Western Blot (Tissue lysate)

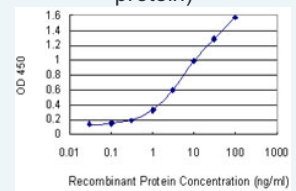
Application Image

Western Blot (Tissue lysate)

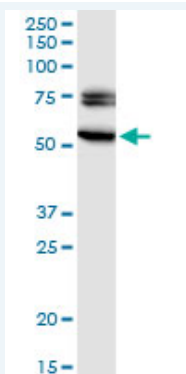


Western Blot (Recombinant protein)

Sandwich ELISA (Recombinant protein)



ELISA



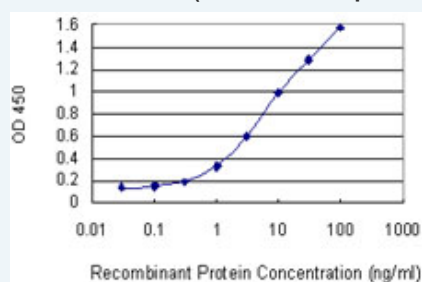
EGR2 monoclonal antibody (M03), clone 1G5. Western Blot analysis of EGR2 expression in rat brain.

[Protocol Download](#)

Western Blot (Recombinant protein)

[Protocol Download](#)

Sandwich ELISA (Recombinant protein)



Detection limit for recombinant GST tagged EGR2 is 0.1 ng/ml as a capture antibody.

[Protocol Download](#)

ELISA

Gene Information

Entrez GeneID: [1959](#)

GeneBank [NM_000399](#)

Accession#:

Protein [NP_000390.2](#)

Accession#:

Gene Name: EGR2

Gene Alias: AT591,CMT1D,CMT4E,DKFZp686J1957,FLJ14547,KROX20

Gene Description: early growth response 2 (Krox-20 homolog, Drosophila)

Omim ID: [129010](#), [145900](#), [605253](#), [607678](#)

Gene Ontology: [Hyperlink](#)

Gene Summary: The protein encoded by this gene is a transcription factor with three tandem C2H2-type zinc fingers. Defects in this gene are associated with Charcot-Marie-Tooth disease type 1D (CMT1D), Charcot-Marie-Tooth disease type 4E (CMT4E), and with Dejerine-Sottas syndrome (DSS). Multiple transcript variants encoding two different isoforms have been found for this gene. [provided by RefSeq]

Other Designations: KROX-20, Drosophila, homolog (early growth response-2),Krox-20 homolog,OTTHUMP00000062133,early growth response 2 protein

Related Disease

[Alzheimer Disease](#) [Alzheimer disease](#) [Cardiovascular Diseases](#)
[Charcot-Marie-Tooth Disease](#) [Deafness](#) [Deafness](#) [Diabetes Complications](#)
[Genetic Predisposition to Disease](#)
[Hereditary Central Nervous System Demyelinating Diseases](#)
[Lupus Erythematosus, Systemic](#) [Metabolic Syndrome X](#) [Neoplasms](#) [Osteoporosis](#)
[Ovarian Neoplasms](#) [Schizophrenia](#) [Scoliosis](#)

[服務條款](#) | [隱私權政策](#) | [著作及商標](#) | [網站地圖](#)

©2016 亞諾法生技股份有限公司 Abnova Corporation. 版權所有.