



# SZABO SCANDIC

Part of Europa Biosite

## Produktinformation



Forschungsprodukte & Biochemikalien



Zellkultur & Verbrauchsmaterial



Diagnostik & molekulare Diagnostik



Laborgeräte & Service

Weitere Information auf den folgenden Seiten!  
See the following pages for more information!



### Lieferung & Zahlungsart

siehe unsere [Liefer- und Versandbedingungen](#)

### Zuschläge

- Mindermengenzuschlag
- Trockeneiszuschlag
- Gefahrgutzuschlag
- Expressversand

### SZABO-SCANDIC HandelsgmbH

Quellenstraße 110, A-1100 Wien

T. +43(0)1 489 3961-0

F. +43(0)1 489 3961-7

[mail@szabo-scandic.com](mailto:mail@szabo-scandic.com)

[www.szabo-scandic.com](http://www.szabo-scandic.com)

[linkedin.com/company/szaboscandic](https://www.linkedin.com/company/szaboscandic) 

## EGR2 293T Cell Transient Overexpression Lysate(Denatured)

Catalog # : H00001959-T01

規格 : [ 100 uL ]

List All

### Specification

**Transfected Cell Line:** 293T

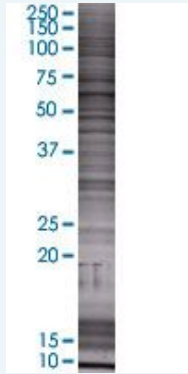
**Plasmid:** pCMV-EGR2 full-length

**Host:** Human

**Theoretical MW (kDa):** 52.47

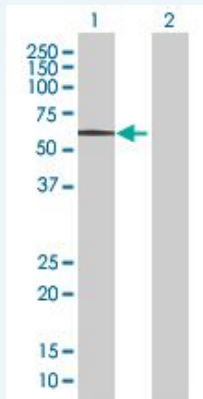
**Quality Control Testing:** Transient overexpression cell lysate was tested with Anti-EGR2 antibody ([H00001959-B01](#)) by Western Blots.

#### SDS-PAGE Gel



EGR2 transfected lysate.

#### Western Blot



Lane 1: EGR2 transfected lysate ( 52.47 KDa)

Lane 2: Non-transfected lysate.

**Storage Buffer:** 1X Sample Buffer (50 mM Tris-HCl, 2% SDS, 10% glycerol, 300 mM 2-mercaptoethanol, 0.01% Bromophenol blue)

**Storage Instruction:** Store at -80°C. Aliquot to avoid repeated freezing and thawing.

**MSDS:**  [Download](#)

### Applications

## Western Blot

### Gene Information

**Entrez GeneID:** [1959](#)

**GeneBank  
Accession#:** [NM\\_000399.2](#)

**Protein  
Accession#:** [NP\\_000390.2](#)

**Gene Name:** EGR2

**Gene Alias:** AT591,CMT1D,CMT4E,DKFZp686J1957,FLJ14547,KROX20

**Gene  
Description:** early growth response 2 (Krox-20 homolog, Drosophila)

**Omim ID:** [129010](#), [145900](#), [605253](#), [607678](#)

**Gene Ontology:** [Hyperlink](#)

**Gene Summary:** The protein encoded by this gene is a transcription factor with three tandem C2H2-type zinc fingers. Defects in this gene are associated with Charcot-Marie-Tooth disease type 1D (CMT1D), Charcot-Marie-Tooth disease type 4E (CMT4E), and with Dejerine-Sottas syndrome (DSS). Multiple transcript variants encoding two different isoforms have been found for this gene. [provided by RefSeq]

**Other  
Designations:** KROX-20, Drosophila, homolog (early growth response-2),Krox-20 homolog,OTTHUMP00000062133,early growth response 2 protein

### Related Disease

[Alzheimer Disease](#) [Alzheimer disease](#) [Cardiovascular Diseases](#)  
[Charcot-Marie-Tooth Disease](#) [Deafness](#) [Deafness](#) [Diabetes Complications](#)  
[Genetic Predisposition to Disease](#)  
[Hereditary Central Nervous System Demyelinating Diseases](#)  
[Lupus Erythematosus](#), [Systemic Metabolic Syndrome X](#) [Neoplasms](#) [Osteoporosis](#)  
[Ovarian Neoplasms](#) [Schizophrenia](#) [Scoliosis](#)

[服務條款](#) | [隱私權政策](#) | [著作及商標](#) | [網站地圖](#)

©2016 亞諾法生技股份有限公司 Abnova Corporation. 版權所有.