



SZABO SCANDIC

Part of Europa Biosite

Produktinformation



Forschungsprodukte & Biochemikalien



Zellkultur & Verbrauchsmaterial



Diagnostik & molekulare Diagnostik



Laborgeräte & Service

Weitere Information auf den folgenden Seiten!
See the following pages for more information!



Lieferung & Zahlungsart

siehe unsere [Liefer- und Versandbedingungen](#)

Zuschläge

- Mindermengenzuschlag
- Trockeneiszuschlag
- Gefahrgutzuschlag
- Expressversand

SZABO-SCANDIC HandelsgmbH

Quellenstraße 110, A-1100 Wien

T. +43(0)1 489 3961-0

F. +43(0)1 489 3961-7

mail@szabo-scandic.com

www.szabo-scandic.com

[linkedin.com/company/szaboscandic](https://www.linkedin.com/company/szaboscandic) 

EGR2 293T Cell Transient Overexpression Lysate(Denatured)

Catalog # : H00001959-T02

規格 : [100 uL]

List All

Specification

Transfected Cell Line: 293T

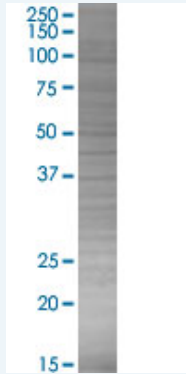
Plasmid: pCMV-EGR2 full-length

Host: Human

Theoretical MW (kDa): 50.3

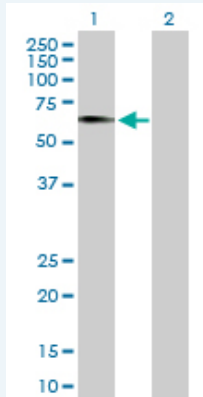
Quality Control Testing: Transient overexpression cell lysate was tested with Anti-EGR2 antibody ([H00001959-B03P](#)) by Western Blots.

SDS-PAGE Gel



EGR2 transfected lysate.

Western Blot



Lane 1: EGR2 transfected lysate (50.3 KDa)

Lane 2: Non-transfected lysate.

Storage Buffer: 1X Sample Buffer (50 mM Tris-HCl, 2% SDS, 10% glycerol, 300 mM 2-mercaptoethanol, 0.01% Bromophenol blue)

Storage Instruction: Store at -80°C. Aliquot to avoid repeated freezing and thawing.

MSDS:  [Download](#)

Applications

Application Image

Western Blot

Western Blot

Gene Information

Entrez GeneID: [1959](#)

GeneBank Accession#: [NM_000399.2](#)

Protein Accession#: [NP_000390.2](#)

Gene Name: EGR2

Gene Alias: AT591,CMT1D,CMT4E,DKFZp686J1957,FLJ14547,KROX20

Gene Description: early growth response 2 (Krox-20 homolog, Drosophila)

Omim ID: [129010](#), [145900](#), [605253](#), [607678](#)

Gene Ontology: [Hyperlink](#)

Gene Summary: The protein encoded by this gene is a transcription factor with three tandem C2H2-type zinc fingers. Defects in this gene are associated with Charcot-Marie-Tooth disease type 1D (CMT1D), Charcot-Marie-Tooth disease type 4E (CMT4E), and with Dejerine-Sottas syndrome (DSS). Multiple transcript variants encoding two different isoforms have been found for this gene. [provided by RefSeq]

Other Designations: KROX-20, Drosophila, homolog (early growth response-2),Krox-20 homolog,OTTHUMP00000062133,early growth response 2 protein

Related Disease

[Alzheimer Disease](#) [Alzheimer disease](#) [Cardiovascular Diseases](#)
[Charcot-Marie-Tooth Disease](#) [Deafness](#) [Deafness](#) [Diabetes Complications](#)
[Genetic Predisposition to Disease](#)
[Hereditary Central Nervous System Demyelinating Diseases](#)
[Lupus Erythematosus](#), [Systemic Metabolic Syndrome X](#) [Neoplasms](#) [Osteoporosis](#)
[Ovarian Neoplasms](#) [Schizophrenia](#) [Scoliosis](#)

[服務條款](#) | [隱私權政策](#) | [著作及商標](#) | [網站地圖](#)

©2016 亞諾法生技股份有限公司 Abnova Corporation. 版權所有.