



SZABO SCANDIC

Part of Europa Biosite

Produktinformation



Forschungsprodukte & Biochemikalien



Zellkultur & Verbrauchsmaterial



Diagnostik & molekulare Diagnostik



Laborgeräte & Service

Weitere Information auf den folgenden Seiten!
See the following pages for more information!



Lieferung & Zahlungsart

siehe unsere [Liefer- und Versandbedingungen](#)

Zuschläge

- Mindermengenzuschlag
- Trockeneiszuschlag
- Gefahrgutzuschlag
- Expressversand

SZABO-SCANDIC HandelsgmbH

Quellenstraße 110, A-1100 Wien

T. +43(0)1 489 3961-0

F. +43(0)1 489 3961-7

mail@szabo-scandic.com

www.szabo-scandic.com

[linkedin.com/company/szaboscandic](https://www.linkedin.com/company/szaboscandic) 



EPHA2 MaxPab mouse polyclonal antibody (B02) MaxPab®

Catalog # : H00001969-B02

規格 : [50 uL]

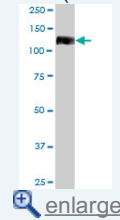
[List All](#)

Specification

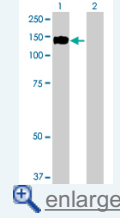
Product Description:	Mouse polyclonal antibody raised against a full-length human EPHA2 protein.
Immunogen:	EPHA2 (NP_004422.2, 1 a.a. ~ 976 a.a) full-length human protein.
Sequence:	MELQAARACFALLWGCALAAAAAAGQKEVLLDFAAAGGELGWLTHPY GKGWDLMQNIMNDMPIYMYSVCNVMSGDQDNWLRNWWYRGEAERIFI ELKFTVRDCNSFPGGASSCKETFNL YYAESDLDYGTNFQKRLF TKIDTIA PDEITVSSDFEARHVKLNVEERSVGPLTRKGFYLAFAQDIGACVALLSVRV YYKKPELLQGLAHPETIAGSDAPSLATVAGTCVDHAVVPPGGEEP HCAVDGEWLVPICQCLCQAGYEKVEDACQACSPGFFKFEASESPCLEC PEHTLPSEGATSCECEEGFFRAPQDPASMPCTRPPSAPHYLTA VGMG AKVELRWTPPQDSGGREDIVSVTCEQCWPESGECGPCEASVRYSEPP HGLTRTSVTVSDLEPHMNYFTTVEARNGVSLVTSRSFRTASVSINQTE PPKVRLEGRSTTSLSVSWSIPPPQQSRVWKYEVTYRKKGDSNSYNVRR TEGFSVTLDDLAPDTTYLVQVQAL TQEGQGAGSKVHEFQTLSPESGSGN LAVIGGVAVGVWLLLVLAGVGVFFIHRRRKNQRARQSPEDVYFSKSEQLKP LKTYYDPHTYEDPNQAVLKFTTEIHPSCVTRQKVIGAGEFGEVYKGMKLT SSGKKEVPVAIKTLKAGYTEKQRVDFLGEAGIMGQF SHHNIIRLEGVISKY KPMMIITEYMENGALDKFLREKDGESVLQLVGMLRGAAGMKYLANMNY VHRDLAARNILVNSNLVCKVSDFGLSRVLEDDPEATYTTSGGKIPIRWTA PEAISYRKFTSASDVVSFGIMMWEVMTYGERPYWELSNHEVMKAINDGF RLPTPMDPCSAIYQLMMQCWQQRARRPKFADIVSILDKLIRAPDSLKTL ADFDPVRSIRLPSTSGSEGVPFRTVSEWLESIKMQQYTEHFMAAGYTAIE KVVQMTNDDIKRIGVRLPGHQKRIAYSLGLKDKQVNTVGIPI
Host:	Mouse
Reactivity:	Human
Quality Control Testing:	Antibody reactive against mammalian transfected lysate.
Storage Buffer:	No additive
Storage Instruction:	Store at -20°C or lower. Aliquot to avoid repeated freezing and thawing.
Note:	For IHC and IF applications, antibody purification with Protein A will be needed prior to use.
MSDS:	 Download
Datasheet:	 Download

Application Image

Western Blot (Tissue lysate)

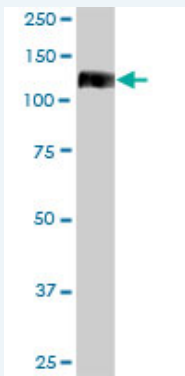


Western Blot (Transfected lysate)



Applications

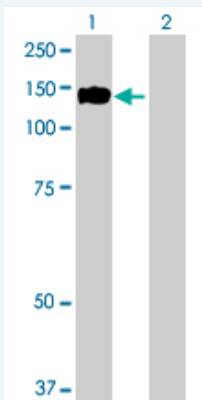
Western Blot (Tissue lysate)



EPHA2 MaxPab polyclonal antibody. Western Blot analysis of EPHA2 expression in human pancreas.

 [Protocol Download](#)

Western Blot (Transfected lysate)



Western Blot analysis of EPHA2 expression in transfected 293T cell line ([H00001969-T02](#)) by EPHA2 MaxPab polyclonal antibody.

Lane 1: EPHA2 transfected lysate(107.36 KDa).

Lane 2: Non-transfected lysate.

 [Protocol Download](#)

Gene Information

Entrez GeneID: [1969](#)

GeneBank Accession#: [NM_004431.2](#)

Protein Accession#: [NP_004422.2](#)

Gene Name: EPHA2

Gene Alias: ECK

Gene Description: EPH receptor A2

Omim ID: [176946](#)

Gene Ontology: [Hyperlink](#)

Gene Summary: This gene belongs to the ephrin receptor subfamily of the protein-tyrosine kinase family. EPH and EPH-related receptors have been implicated in mediating developmental events, particularly in the nervous system. Receptors in the EPH subfamily typically have a single kinase domain and an extracellular region containing a Cys-rich domain and 2 fibronectin type III repeats. The ephrin receptors are divided into 2 groups based on the similarity of their extracellular domain sequences and their affinities for binding ephrin-A and ephrin-B ligands. This gene

encodes a protein that binds ephrin-A ligands. [provided by RefSeq]

Other ephrin receptor EphA2,epithelial cell receptor protein tyrosine
Designations: kinase,protein tyrosine kinase,receptor protein tyrosine kinase
regulated by p53 and E2F-1,soluble EPHA2 variant 1

Gene Pathway

[Axon guidance](#)

Related Disease

[Cataract Genetic Predisposition to Disease](#) [Hearing Loss](#)

[服務條款](#) | [隱私權政策](#) | [著作及商標](#) | [網站地圖](#)

©2016 亞諾法生技股份有限公司 Abnova Corporation. 版權所有.