



SZABO SCANDIC

Part of Europa Biosite

Produktinformation



Forschungsprodukte & Biochemikalien



Zellkultur & Verbrauchsmaterial



Diagnostik & molekulare Diagnostik



Laborgeräte & Service

Weitere Information auf den folgenden Seiten!
See the following pages for more information!



Lieferung & Zahlungsart

siehe unsere [Liefer- und Versandbedingungen](#)

Zuschläge

- Mindermengenzuschlag
- Trockeneiszuschlag
- Gefahrgutzuschlag
- Expressversand

SZABO-SCANDIC HandelsgmbH

Quellenstraße 110, A-1100 Wien

T. +43(0)1 489 3961-0

F. +43(0)1 489 3961-7

mail@szabo-scandic.com

www.szabo-scandic.com

[linkedin.com/company/szaboscandic](https://www.linkedin.com/company/szaboscandic) 

EPHA2 monoclonal antibody (M01), clone 6F8

Catalog # : H00001969-M01

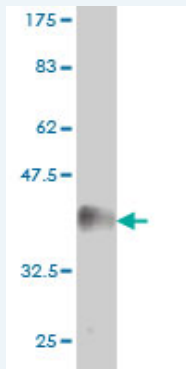
規格 : [100 ug]

[List All](#)

Specification

Product Description:	Mouse monoclonal antibody raised against a partial recombinant EPHA2.
Immunogen:	EPHA2 (AAH37166, 204 a.a. ~ 326 a.a) partial recombinant protein with GST tag. MW of the GST tag alone is 26 KDa.
Sequence:	LLQGLAHPETIAGSDAPSLATVAGTCVDHAVVPPGGEEPRMHC AVDGE WLVPIGQCLCQAGYEKVEDACQACSPGFFKFEASESPCLEP EHTLPSP EGATSCECEEGFFRAPQDPASMPCT
Host:	Mouse
Reactivity:	Human
Isotype:	IgG2a Kappa

Quality Control Testing: Antibody Reactive Against Recombinant Protein.



Western Blot detection against Immunogen (39.16 KDa) .

Storage Buffer: In 1x PBS, pH 7.4

Storage Instruction: Store at -20°C or lower. Aliquot to avoid repeated freezing and thawing.

MSDS: [Download](#)

Datasheet: [Download](#)

Applications

Western Blot (Recombinant protein)

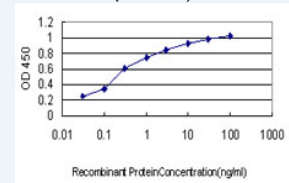
[Protocol Download](#)

Sandwich ELISA (Recombinant protein)

Application Image

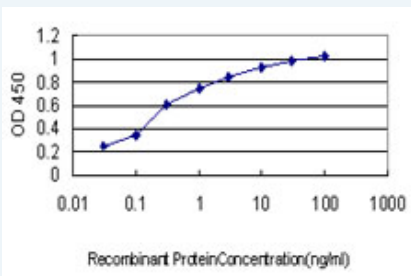
Western Blot (Recombinant protein)

Sandwich ELISA (Recombinant protein)



[enlarge](#)

ELISA



Detection limit for recombinant GST tagged EPHA2 is approximately 0.03ng/ml as a capture antibody.

 [Protocol Download](#)

ELISA

Gene Information

Entrez GeneID: [1969](#)

GeneBank [BC037166](#)

Accession#:

Protein [AAH37166](#)

Accession#:

Gene Name: EPHA2

Gene Alias: ECK

Gene Description: EPH receptor A2

Omim ID: [176946](#)

Gene Ontology: [Hyperlink](#)

Gene Summary: This gene belongs to the ephrin receptor subfamily of the protein-tyrosine kinase family. EPH and EPH-related receptors have been implicated in mediating developmental events, particularly in the nervous system. Receptors in the EPH subfamily typically have a single kinase domain and an extracellular region containing a Cys-rich domain and 2 fibronectin type III repeats. The ephrin receptors are divided into 2 groups based on the similarity of their extracellular domain sequences and their affinities for binding ephrin-A and ephrin-B ligands. This gene encodes a protein that binds ephrin-A ligands. [provided by RefSeq]

Other Designations: ephrin receptor EphA2,epithelial cell receptor protein tyrosine kinase,protein tyrosine kinase,receptor protein tyrosine kinase regulated by p53 and E2F-1,soluble EPHA2 variant 1

Gene Pathway

[Axon guidance](#)

Related Disease

[Cataract](#) [Genetic Predisposition to Disease](#) [Hearing Loss](#)