



SZABO SCANDIC

Part of Europa Biosite

Produktinformation



Forschungsprodukte & Biochemikalien



Zellkultur & Verbrauchsmaterial



Diagnostik & molekulare Diagnostik



Laborgeräte & Service

Weitere Information auf den folgenden Seiten!
See the following pages for more information!



Lieferung & Zahlungsart

siehe unsere [Liefer- und Versandbedingungen](#)

Zuschläge

- Mindermengenzuschlag
- Trockeneiszuschlag
- Gefahrgutzuschlag
- Expressversand

SZABO-SCANDIC HandelsgmbH

Quellenstraße 110, A-1100 Wien

T. +43(0)1 489 3961-0

F. +43(0)1 489 3961-7

mail@szabo-scandic.com

www.szabo-scandic.com

[linkedin.com/company/szaboscandic](https://www.linkedin.com/company/szaboscandic) 

EPHA2 monoclonal antibody (M02), clone 1E3

Catalog # : H00001969-M02

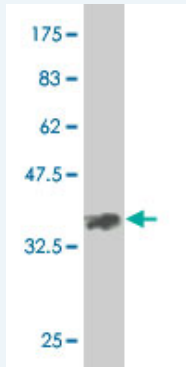
規格 : [100 ug]

[List All](#)

Specification

Product Description:	Mouse monoclonal antibody raised against a partial recombinant EPHA2.
Immunogen:	EPHA2 (AAH37166, 204 a.a. ~ 326 a.a) partial recombinant protein with GST tag. MW of the GST tag alone is 26 KDa.
Sequence:	LLQGLAHPETIAGSDAPSLATVAGTCVDHAVPPGGEEPRMHCAMDGE WLVPIGQCLCQAGYEKVEDACQACSPGFFKFEASESPCLECPEHTLPSP EGATSCECEEGFFRAPQDPASMPCT
Host:	Mouse
Reactivity:	Human
Isotype:	IgG3 Kappa

Quality Control Testing: Antibody Reactive Against Recombinant Protein.



Western Blot detection against Immunogen (39.16 KDa) .

Storage Buffer: In 1x PBS, pH 7.4

Storage Instruction: Store at -20°C or lower. Aliquot to avoid repeated freezing and thawing.

MSDS: [Download](#)

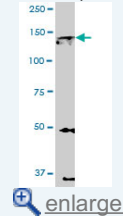
Datasheet: [Download](#)

Applications

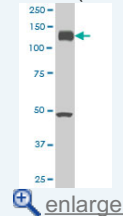
Western Blot (Cell lysate)

Application Image

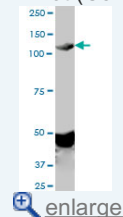
Western Blot (Cell lysate)



Western Blot (Cell lysate)

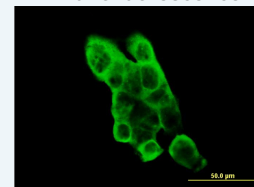


Western Blot (Cell lysate)



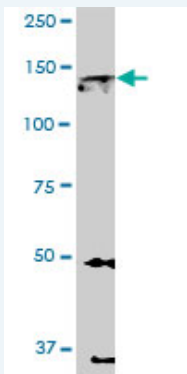
Western Blot (Recombinant protein)

Immunofluorescence



Sandwich ELISA (Recombinant protein)

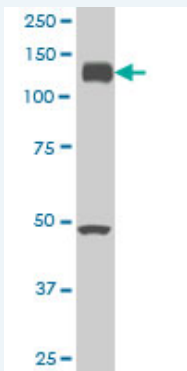
ELISA



EPHA2 monoclonal antibody (M02), clone 1E3. Western Blot analysis of EPHA2 expression in U-2 OS (Cat # L022V1).

 [Protocol Download](#)

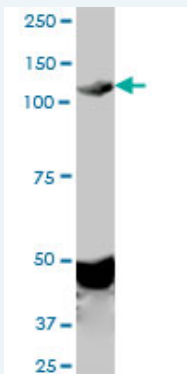
Western Blot (Cell lysate)



EPHA2 monoclonal antibody (M02), clone 1E3 Western Blot analysis of EPHA2 expression in A-431 (Cat # L015V1).

 [Protocol Download](#)

Western Blot (Cell lysate)



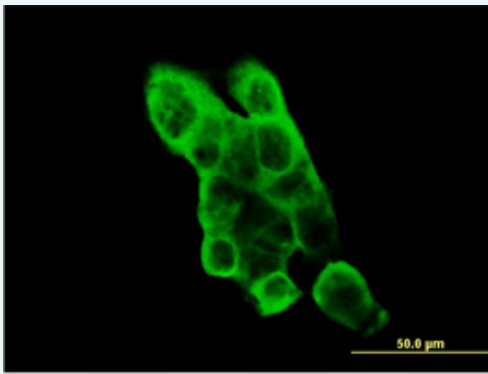
EPHA2 monoclonal antibody (M02), clone 1E3. Western Blot analysis of EPHA2 expression in Jurkat (Cat # L017V1).

 [Protocol Download](#)

Western Blot (Recombinant protein)

 [Protocol Download](#)

Immunofluorescence



[enlarge this image](#)

Immunofluorescence of monoclonal antibody to EPHA2 on A-431 cell. [antibody concentration 10 ug/ml]

[Protocol Download](#)

Sandwich ELISA (Recombinant protein)

Detection limit for recombinant GST tagged EPHA2 is approximately 10ng/ml as a capture antibody.

[Protocol Download](#)

ELISA

Gene Information

Entrez GeneID: [1969](#)

GeneBank Accession#: [BC037166](#)

Protein Accession#: [AAH37166](#)

Gene Name: EPHA2

Gene Alias: ECK

Gene Description: EPH receptor A2

Omim ID: [176946](#)

Gene Ontology: [Hyperlink](#)

Gene Summary: This gene belongs to the ephrin receptor subfamily of the protein-tyrosine kinase family. EPH and EPH-related receptors have been implicated in mediating developmental events, particularly in the nervous system. Receptors in the EPH subfamily typically have a single kinase domain and an extracellular region containing a Cys-rich domain and 2 fibronectin type III repeats. The ephrin receptors are divided into 2 groups based on the similarity of their extracellular domain sequences and their affinities for binding ephrin-A and ephrin-B ligands. This gene encodes a protein that binds ephrin-A ligands. [provided by RefSeq]

Other Designations: ephrin receptor EphA2,epithelial cell receptor protein tyrosine kinase,protein tyrosine kinase,receptor protein tyrosine kinase regulated by p53 and E2F-1,soluble EPHA2 variant 1

Gene Pathway

[Axon guidance](#)

Related Disease

[Cataract Genetic Predisposition to Disease](#) [Hearing Loss](#)

