



SZABO SCANDIC

Part of Europa Biosite

Produktinformation



Forschungsprodukte & Biochemikalien



Zellkultur & Verbrauchsmaterial



Diagnostik & molekulare Diagnostik



Laborgeräte & Service

Weitere Information auf den folgenden Seiten!
See the following pages for more information!



Lieferung & Zahlungsart

siehe unsere [Liefer- und Versandbedingungen](#)

Zuschläge

- Mindermengenzuschlag
- Trockeneiszuschlag
- Gefahrgutzuschlag
- Expressversand

SZABO-SCANDIC HandelsgmbH

Quellenstraße 110, A-1100 Wien

T. +43(0)1 489 3961-0

F. +43(0)1 489 3961-7

mail@szabo-scandic.com

www.szabo-scandic.com

[linkedin.com/company/szaboscandic](https://www.linkedin.com/company/szaboscandic) 

EPHA2 293T Cell Transient Overexpression Lysate(Denatured)

Catalog # : H00001969-T01

規格 : [100 uL]

[List All](#)

Specification

Transfected Cell Line: 293T

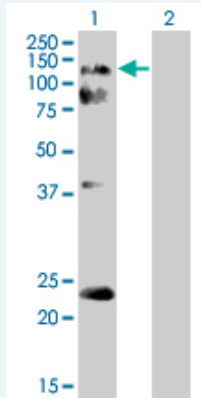
Plasmid: pCMV-EPHA2 full-length

Host: Human

Theoretical MW (kDa): 107.47

Quality Control Testing: Transient overexpression cell lysate was tested with Anti-EPHA2 antibody ([H00001969-B01](#)) by Western Blots.

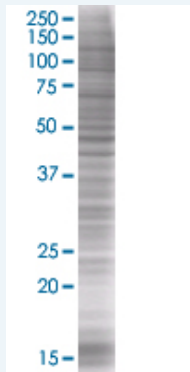
Western Blot



Lane 1: EPHA2 transfected lysate (107.36 KDa)

Lane 2: Non-transfected lysate.

SDS-PAGE Gel



EPHA2 transfected lysate.

Storage Buffer: 1X Sample Buffer (50 mM Tris-HCl, 2% SDS, 10% glycerol, 300 mM 2-mercaptoethanol, 0.01% Bromophenol blue)

Storage Instruction: Store at -80°C. Aliquot to avoid repeated freezing and thawing.

MSDS: [Download](#)

Applications

Application Image

Western Blot

Western Blot

Gene Information

Entrez GeneID: [1969](#)

GeneBank [BC037166](#)
Accession#:

Protein [AAH37166](#)
Accession#:

Gene Name: EPHA2

Gene Alias: ECK

Gene Description: EPH receptor A2

Omim ID: [176946](#)

Gene Ontology: [Hyperlink](#)

Gene Summary: This gene belongs to the ephrin receptor subfamily of the protein-tyrosine kinase family. EPH and EPH-related receptors have been implicated in mediating developmental events, particularly in the nervous system. Receptors in the EPH subfamily typically have a single kinase domain and an extracellular region containing a Cys-rich domain and 2 fibronectin type III repeats. The ephrin receptors are divided into 2 groups based on the similarity of their extracellular domain sequences and their affinities for binding ephrin-A and ephrin-B ligands. This gene encodes a protein that binds ephrin-A ligands. [provided by RefSeq]

Other Designations: ephrin receptor EphA2,epithelial cell receptor protein tyrosine kinase,protein tyrosine kinase,receptor protein tyrosine kinase regulated by p53 and E2F-1,soluble EPHA2 variant 1

Gene Pathway

[Axon guidance](#)

Related Disease

[Cataract Genetic Predisposition to Disease](#) [Hearing Loss](#)