



# SZABO SCANDIC

Part of Europa Biosite

## Produktinformation



Forschungsprodukte & Biochemikalien



Zellkultur & Verbrauchsmaterial



Diagnostik & molekulare Diagnostik



Laborgeräte & Service

Weitere Information auf den folgenden Seiten!  
See the following pages for more information!



### Lieferung & Zahlungsart

siehe unsere [Liefer- und Versandbedingungen](#)

### Zuschläge

- Mindermengenzuschlag
- Trockeneiszuschlag
- Gefahrgutzuschlag
- Expressversand

### SZABO-SCANDIC HandelsgmbH

Quellenstraße 110, A-1100 Wien

T. +43(0)1 489 3961-0

F. +43(0)1 489 3961-7

[mail@szabo-scandic.com](mailto:mail@szabo-scandic.com)

[www.szabo-scandic.com](http://www.szabo-scandic.com)

[linkedin.com/company/szaboscandic](https://www.linkedin.com/company/szaboscandic) 

## EPHA2 293T Cell Transient Overexpression Lysate(Denatured)

Catalog # : H00001969-T02

規格 : [ 100 uL ]

[List All](#)

### Specification

**Transfected Cell Line:** 293T

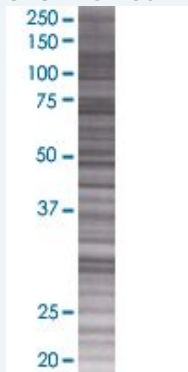
**Plasmid:** pCMV-EPHA2 full-length

**Host:** Human

**Theoretical MW (kDa):** 108.3

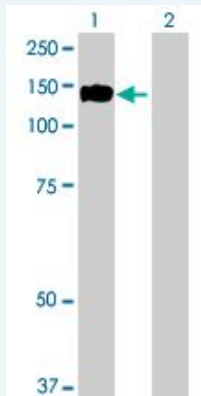
**Quality Control Testing:** Transient overexpression cell lysate was tested with Anti-EPHA2 antibody (H00001969-B02) by Western Blots.

#### SDS-PAGE Gel



EPHA2 transfected lysate.

#### Western Blot



Lane 1: EPHA2 transfected lysate ( 108.3 KDa)

Lane 2: Non-transfected lysate.

**Storage Buffer:** 1X Sample Buffer (50 mM Tris-HCl, 2% SDS, 10% glycerol, 300 mM 2-mercaptoethanol, 0.01% Bromophenol blue)

**Storage Instruction:** Store at -80°C. Aliquot to avoid repeated freezing and thawing.

**MSDS:**  [Download](#)

### Applications

### Application Image

Western Blot

## Western Blot

### Gene Information

Entrez GeneID: [1969](#)

GeneBank Accession#: [NM\\_004431.2](#)

Protein Accession#: [NP\\_004422.2](#)

Gene Name: EPHA2

Gene Alias: ECK

Gene Description: EPH receptor A2

Omim ID: [176946](#)

Gene Ontology: [Hyperlink](#)

**Gene Summary:** This gene belongs to the ephrin receptor subfamily of the protein-tyrosine kinase family. EPH and EPH-related receptors have been implicated in mediating developmental events, particularly in the nervous system. Receptors in the EPH subfamily typically have a single kinase domain and an extracellular region containing a Cys-rich domain and 2 fibronectin type III repeats. The ephrin receptors are divided into 2 groups based on the similarity of their extracellular domain sequences and their affinities for binding ephrin-A and ephrin-B ligands. This gene encodes a protein that binds ephrin-A ligands. [provided by RefSeq]

**Other Designations:** ephrin receptor EphA2,epithelial cell receptor protein tyrosine kinase,protein tyrosine kinase,receptor protein tyrosine kinase regulated by p53 and E2F-1,soluble EPHA2 variant 1

### Gene Pathway

[Axon guidance](#)

### Related Disease

[Cataract Genetic Predisposition to Disease Hearing Loss](#)