



SZABO SCANDIC

Part of Europa Biosite

Produktinformation



Forschungsprodukte & Biochemikalien



Zellkultur & Verbrauchsmaterial



Diagnostik & molekulare Diagnostik



Laborgeräte & Service

Weitere Information auf den folgenden Seiten!
See the following pages for more information!



Lieferung & Zahlungsart

siehe unsere [Liefer- und Versandbedingungen](#)

Zuschläge

- Mindermengenzuschlag
- Trockeneiszuschlag
- Gefahrgutzuschlag
- Expressversand

SZABO-SCANDIC HandelsgmbH

Quellenstraße 110, A-1100 Wien

T. +43(0)1 489 3961-0

F. +43(0)1 489 3961-7

mail@szabo-scandic.com

www.szabo-scandic.com

[linkedin.com/company/szaboscandic](https://www.linkedin.com/company/szaboscandic) 

EIF4E 293T Cell Transient Overexpression Lysate(Denatured)

Catalog # : H00001977-T01

規格 : [100 uL]

List All

Specification

Transfected Cell Line: 293T

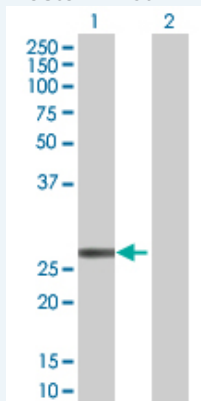
Plasmid: pCMV-EIF4E full-length

Host: Human

Theoretical MW (kDa): 23.98

Quality Control Testing: Transient overexpression cell lysate was tested with Anti-EIF4E antibody ([H00001977-B01](#)) by Western Blots.

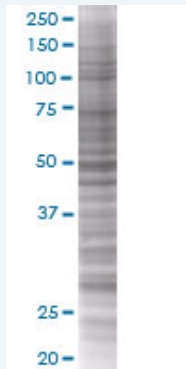
Western Blot



Lane 1: EIF4E transfected lysate (25.1 KDa)

Lane 2: Non-transfected lysate.

SDS-PAGE Gel



EIF4E transfected lysate.

Storage Buffer: 1X Sample Buffer (50 mM Tris-HCl, 2% SDS, 10% glycerol, 300 mM 2-mercaptoethanol, 0.01% Bromophenol blue)

Storage Instruction: Store at -80°C. Aliquot to avoid repeated freezing and thawing.

MSDS:  [Download](#)

Applications

Application Image

Western Blot

Western Blot

Gene Information

Entrez GeneID: [1977](#)

GeneBank Accession#: [NM_001968](#)

Protein Accession#: [NP_001959](#)

Gene Name: EIF4E

Gene Alias: CBP,EIF4E1,EIF4EL1,EIF4F,MGC111573

Gene Description: eukaryotic translation initiation factor 4E

Omim ID: [133440](#)

Gene Ontology: [Hyperlink](#)

Gene Summary: All eukaryotic cellular mRNAs are blocked at their 5-prime ends with the 7-methylguanosine cap structure, m7GpppX (where X is any nucleotide). This structure is involved in several cellular processes including enhanced translational efficiency, splicing, mRNA stability, and RNA nuclear export. EIF4E is a eukaryotic translation initiation factor involved in directing ribosomes to the cap structure of mRNAs. It is a 24-kD polypeptide that exists as both a free form and as part of a multiprotein complex termed EIF4F. The EIF4E polypeptide is the rate-limiting component of the eukaryotic translation apparatus and is involved in the mRNA-ribosome binding step of eukaryotic protein synthesis. The other subunits of EIF4F are a 50-kD polypeptide, termed EIF4A (see MIM 601102), that possesses ATPase and RNA helicase activities, and a 220-kD polypeptide, EIF4G (MIM 600495) (Rychlik et al., 1987 [PubMed 3469651]).[supplied by OMIM

Other Designations: eIF-4F 25 kDa subunit,eukaryotic translation initiation factor 4E-like 1,mRNA cap-binding protein

Gene Pathway

[Insulin signaling pathway](#) [mTOR signaling pathway](#)

Related Disease

[Tobacco Use Disorder](#)